

July 24, 2015

Announcements

Thank you...

As you all know by now, I will leave Yale in a few weeks to join Massachusetts General Hospital as Chairman and CEO of the Massachusetts General Physicians Organization. It's an exciting opportunity to continue to advance the mission of academic medicine - providing exceptional care, performing ground breaking research and training the leaders of American medicine--all made more challenging by the ever-evolving economics of healthcare.

I leave Yale and Smilow with the knowledge and deep belief that the senior management of both institutions is among the finest in the nation. We have just completed a comprehensive strategic plan that will guide Yale Cancer Center and Smilow for the next five years. Plans for the next renewal of the P30 grant are well underway with dynamic and vigorous program leaders in place for this grant cycle. And Smilow will continue to lead the cancer landscape with outstanding clinical care and therapeutic trials, and the very best doctors and nurses.

I am delighted that Dr. Peter Schulam has agreed to be the interim Director of Yale Cancer Center and Physician-in-Chief of Smilow Cancer Hospital. Peter is a spectacular physician and an inspiring leader. He has the full support of the University, Hospital, and the cancer center leadership. He will continue as Chair of Urology and I thank him for taking on this critical role.

Thank you for all of the support you have provided to me over the last 6 years. It's been amazing to see the evolution and growth of Yale Cancer Center and Smilow Cancer Hospital and I look forward to celebrating your continued successes in the coming years.

from the desk of

Thomas J. Lynch, Jr., MD

Director, Yale Cancer Center

Physician-in-Chief Smilow Cancer

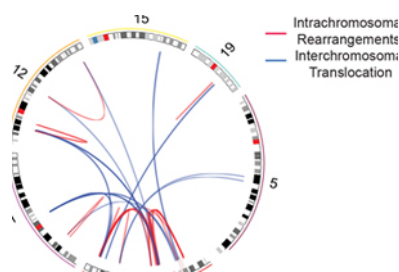
Hospital at Yale-New Haven



Recent News

Read recent articles featuring experts from Yale Cancer Center [News Center >>](#)

LATEST ARTICLES:



Deadly and distinctive: Cancer caused by gene deletions [Read More >>](#)

Xiaomei Ma Named Co-Director of Cancer Prevention and Control Program

We are pleased to announce that Xiaomei Ma, PhD, Associate Professor of Chronic Disease Epidemiology in the School of Public Health, has been named Co-Director of the Cancer Prevention and Control Research Program, along with Melinda Irwin, PhD, MPH. "Xiaomei is a nationally recognized leader in cancer epidemiology, focusing on childhood leukemias, MDS, and cancer outcomes. Given her leadership role within COPPER and her multiple NCI funded grants related to cancer etiology, Xiaomei will help lead CPC to become an exceptional research program. I am delighted to co-lead this program with her," Dr. Irwin said.

Dr. Ma received her bachelor's degree from the University of Shanghai and her PhD from the University of California and has been on the faculty at Yale for the last 12 years.

OWN IT! Clinical Trials in the New Haven Community

Dr. Andrea Silber's proposed project, OWN IT!: Oncologists Welcome New Haven Into Trials, has made it to the finalist round in the Clinical Trial Innovation Prize challenge on the website HeroX. OWN IT! would increase clinical trial participation by ethnically diverse patients as outlined in the Affordable Care Act with the help of an innovative community partnership.

Andrea needs your help and it takes just a minute! HeroX has online voting open now until August 3-anyone can register for free and pick OWN IT as their cause to support.

[Vote Now >>](#)



Cancer, Candy & Coincidence: The Story of Mike&Ike
[Read More >>](#)



Adjuvant Aspirin in Colorectal Cancer
[Read More >>](#)



Drs. Herbst and Krishnan-Sarin Support the Stop Tobacco Sales to Youth Act
[Read More >>](#)

Join Yale Cancer Center on Facebook

Like us on Facebook 

LATEST POSTS:



5th Anniversary Symposium

A Personalized Medicine Approach to Cancer Care

Friday, September 11, 2015
Yale West Campus Conference Center
8:00am – 5:00pm

Symposium Co-Chairs:
Roy S. Herbst, MD, PhD and Patricia M. LoRusso, DO

A 5th Anniversary Symposium: A Personalized Medicine Approach to Cancer Care will celebrate our 4th Pillar: Personalized Cancer Medicine and will feature presentations by our Translational Working Groups and a keynote lecture by Dr. Lillian Siu, Director of the Phase I Program and Co-Director of the Robert and Maggie Bras and Family Drug Development Program at Princess Margaret Hospital.

Dr. Lillian Siu has extensive experience with a personalized approach to early-phase clinical trials and is a leader in head and neck cancer. She has jointly spear-headed the extensive Whole Genome Sequencing approach to drug development that has been a large part of the Princess Margaret clinical program and has been adopted extensively by Cancer Centers throughout Canada.

For more information, or to RSVP, please contact Angela Maria Malerba.




Personalized Medicine Symposium

Join Drs. Roy Herbst and Patricia LoRusso as they host a Personalized Medicine Approach to Cancer Care Symposium in honor of Smilow Cancer Hospital's 5th Anniversary on September 11 featuring presentations from each of our Clinical Programs at Smilow Cancer Hospital.

[Learn More >>](#)

[Register Online >>](#)

Notables

James Yu, MD, PhD presented at an **Institute of Medicine** workshop earlier this week on the Appropriate Use of Advanced Technologies for Radiation Therapy and Surgery in Oncology. Dr. Yu's lecture focused on the "Impact of new technology diffusion on Medicare expenditures."

The **David S. Fischer, MD** annual award for outstanding teaching & mentoring of fellows in **Medical Oncology** was awarded to **Michael E. Hurwitz, MD, PhD**.

A new study suggests that a cancer patient's chances of survival seem to depend partly on activity in specific genes and immune system cells. Dr. Marcus Bosenberg, co-director of Yale Cancer Center's Genetics and Genomics Research Program, said the study's approach -- looking at patterns across different cancers...



[Read More >>](#)

Yale-New Haven Hospital was once again ranked one of the Best Hospitals in the nation by U.S. News & World Report, including for cancer services at Smilow Cancer Hospital.



[Read More >>](#)

Yale Cancer Center's, Dr. Andrea Silber's proposed project, OWN IT!: Oncologists Welcome NewHaven Into Trials, has made it to the finalist round in the Clinical Trial Innovation Prize Challenge. OWN IT! would increase clinical trial participation by ethnically diverse patients. Dr. Silber needs your help! And it takes just a minute.

The David S. Fischer, MD annual award for outstanding teaching & mentoring of fellows in **Hematology** was awarded to **Alfred Lee, MD**.

The David S. Fischer, MD annual award to a faculty member of Yale Cancer Center and The Veterans Administration Connecticut Cancer Center for outstanding teaching & mentoring of fellows in Medical Oncology & Hematology was awarded to **Natalia Neparidze, MD**.

The Medical Oncology & Hematology Fellowship Program annual award for Outstanding Fellow in Research was awarded to **Mehmet Altan, MD** (Medical Oncology) and **Andrew Branagan, MD** (Hematology).

Meina Wang, PhD has joined the **Translational Research Office** as a Senior Research Project Manager.



[Vote Here >>](#)

Tune in to WNPR at 6 PM to listen to an interview with Yale's Dr. Sanjay Kulkarni on organ transplantation for cancer treatment. You can listen live online at wnpr.org or check out the archives on iTunes.



[Read More >>](#)

The newest addition to the Pediatric Hematology Oncology waiting area on the 7th floor of Smilow Cancer Hospital is a cool new interactive computer exhibit to entertain and teach our littlest patients about the fish in the waiting room tanks.



[Read More >>](#)

Research in the News

Deadly and distinctive: Cancer caused by gene deletions

A deadly form of T cell lymphoma is caused by an unusually large number gene deletions, making it distinct among cancers, a new Yale School of Medicine study shows.

Researchers conducted a genomic analysis of normal and cancer cells from patients with cutaneous T-cell lymphoma, a cancer of T-cells of the immune system that normally reside in the skin.

"This cancer has a very distinctive biology," said Jaehyuk Choi, assistant professor of dermatology at Yale and lead author of the paper. Many of the deletions occurred in genes that have been known to play a role in driving the proliferation of T-cells and are potential targets for new therapies, said Choi, a researcher with Yale Cancer Center.

[Read More >>](#)

Employee Profile: Stephanie Speaker

Follow Yale Cancer Center on Twitter

For Stephanie Speaker, Regulatory Manager for the Clinical Trials Office (CTO), her job is all about attention to detail. Supervising a team of 14 staff members covering all therapeutic clinical trials at the Cancer Center, it's not hard to understand why. Stephanie and her team are responsible for opening new trials, and following them through the entire process, up until they are hopefully approved by the FDA.



This process includes monitoring the protocol and submitting any changes and reporting any serious adverse events to the IRB once patients are enrolled in the study. She works closely with faculty, mostly in the Thoracic Oncology and Therapeutic Radiology departments at the moment, the IRB, PRC, and the trial sponsors to make sure certain regulations are being followed. The team also participates in disease team meetings where they get a chance to hear from the physicians how patients are doing on certain trials.

Stephanie prides herself on making sure her team has all the information they need to process a protocol quickly, but with the highest quality possible. An important part of this is teaching what she has learned during her time in the field, and making sure everyone stays on task.

"This job is not for everyone, it requires a lot of focus and documentation, but I enjoy this aspect of the job. My team continues to grow, which is wonderful," said Stephanie. "It means that more studies are opening, which means doctors can see more patients. It may not always seem like it, but it is exciting work. When a drug is approved that we have all been working on together, it is a great feeling."

Funding and Award Opportunities

Faculty Scholars Competition

Follow us on [twitter](#)

LATEST TWEETS:

Prognostic markers hot in #cancer research: Marcus Bosenberg, co-leader, cancer genetics & genomics <http://bit.ly/1Kjj6rf> @USNewsHealth

Study: Irregular Sleeping Patterns Linked To Cancer / CBS Atlanta <http://cbsloc.al/1LrdQoM>

Vote for OWN IT! A project to bring clinical trials to New Haven community. It takes a minute! <https://herox.com/ClinicalTrials> #NHV #clinicaltrial

Tune in to @YaleCancer Answers on @wnpr tonight at 6pm to learn about organ transplantation for #cancer treatment with Dr. Sanjay Kulkarni.

A great way to learn more about skin #cancer prevention is via our radio show Yale Cancer Center Answers on @wnpr <http://bit.ly/1CHADcB>

Building trust and respect with patients = cornerstones of healthcare. @YNHH

Colon Cancer Deaths Tumble, But Not In These Hotspots <http://nbcnews.to/1Hgreon> via @nbcnews

FDA approves targeted therapy for first-line treatment of patients with a type of metastatic lung cancer

Closer to Free

The Simons Foundation, Howard Hughes Medical Institute (HHMI) and the Bill & Melinda Gates Foundation are pleased to announce the Faculty Scholars Competition, a national competition for grants to outstanding early-career scientists.

The three philanthropies will award a total of \$148 million over the program's first five years, awarding up to 70 grants every two and a half to three years. The awards are intended for basic researchers and physician scientists who have already demonstrated significant research accomplishments and show potential to make unique and important contributions to their fields.

The Faculty Scholars Competition marks the first time that HHMI, the Bill & Melinda Gates Foundation and the Simons Foundation have formally undertaken an initiative together.

Application Deadline: July 28, 2015

[Learn More >>](#)

AACR NextGen Grants for Transformative Cancer Research

These three-year grants of \$450,000 represent a new AACR funding initiative to stimulate highly innovative research from young investigators. Eligibility is limited to junior faculty who have held a full-time, tenure-track appointment as an assistant professor for no more than three years.

Letter of Intent Deadline: August 10, 2015

[Learn More >>](#)

Patterson Trust Fellowship Program in Clinical Research

The Robert E. Leet and Clara Guthrie Patterson Trust was established in 1980 for the advancement of medical science, particularly research "relating to human diseases, their causes and relief." Two-year fellowships of \$90,000 (\$45,000 per year) will be awarded to Applicants working in Connecticut or New Jersey.

The Patterson Trust will provide support to early-stage mentored investigators conducting clinical research with a focus on patient-oriented or translational laboratory research. The Program will help the Trust to pursue its mission by providing Applicants with the opportunity to demonstrate creativity and explore opportunities that may promote careers in clinical research. Pilot and preliminary studies are encouraged.

Application Deadline: August 14, 2015

[Learn More >>](#)

closer to free

The fund to advance cancer research and enhance patient care

Events

July 26; 6PM

Yale Cancer Center Answers WNPR

Meet the new Co-Host
Susan Higgins, MD

[Read More >>](#)

July 27; 4PM

Farewell Reception for Dr. Thomas Lynch

Sterling Hall of Medicine/The
Historical Library

[Read More >>](#)

July 30; 9AM

Therapeutic Radiology Grand Rounds

Smilow NP4 101A
*Diverse Roles of KDM5 Histone
Demethylases in Cancer*
Qin Yan, PhD

[Read More >>](#)

August 2; 6PM

Yale Cancer Center Answers WNPR

Prostate and Urologic Cancers
Michael Hurwitz, MD, PhD

[Read More >>](#)

August 6; 9AM

Therapeutic Radiology Grand Rounds

SHM B-201
Medical Student Presentations

[Read More >>](#)

2015 Rausch Pilot Research Grant

To provide seed money to members of Yale Cancer Center (YCC) to enable investigators to engage in innovative cancer research, with the goal of facilitating new research on the fundamental causes of, or an effective cure for, cancer. We anticipate funding two to three pilot grants. Priorities for the pilot grants include studying and/or ameliorating sociodemographic disparities in cancer incidence or outcomes; the prevention and/or treatment of women's cancers, as well as neighborhood/urban or other community factors that contribute to cancer etiology. Preference will be given to research that has a high likelihood of having a demonstrable community impact in the Greater New Haven area.

Application Deadline: August 14, 2015

[Learn More >>](#)

Provocative Questions in Cancer with an Underlying HIV Infection (R01)

The purpose of this funding opportunity announcement (FOA) is to advance our understanding of the risks, development, progression, diagnosis, and treatment of malignancies observed in individuals with an underlying HIV infection or Acquired Immune Deficiency Syndrome (AIDS) through research directed at addressing one of several proposed "Provocative Questions" (PQs). These PQs are not intended to represent the full range of NCI's priorities in HIV/AIDS-related cancer research. Rather, they are meant to challenge researchers to think about and elucidate specific problems and paradoxes in key areas of AIDS-related cancer research that are deemed important but have not received sufficient attention.

Application Deadline: August 18, 2015

[Learn More >>](#)

2015-2016 Yale SPORE in Skin Cancer Developmental Research Awards

The YALE SPORE in Skin Cancer is pleased to announce the availability of DEVELOPMENTAL RESEARCH AWARDS beginning 15 September 2015 to fund projects in amounts up to \$50,000 for one year (Projects may be eligible for a second year of funding, pending receipt and review of a competitive renewal application that documents unequivocal progress during the first year of funding.) Developmental Research Program Awards are intended to support a broad spectrum of innovative pilot projects applicable to human skin cancer risk, prevention, diagnosis, prognosis, or treatment. To be funded, DRP projects must have promising translational research potential, i.e., direct application to human skin cancer, and there must be the expectation that they can evolve into, or be incorporated into, full projects with an unequivocal translational

Submissions

Please submit your recent publication and grant announcements to:

Renee Gaudette

Director, Public Affairs and Marketing

renee.gaudette@yale.edu

 Forward to a Friend

component funded either within this SPORE or as independent R01 (or equivalent) grants.

Application Deadline: August 25, 2015

[Learn More >>](#)

[Download Instructions >>](#)

Class of '61 Yale Cancer Research Award

In order to recognize significant accomplishment and continuing outstanding promise in cancer research, Yale Cancer Center is pleased to announce the Class of '61 Yale Cancer Research Award. This annual award recognizes significant accomplishment in cancer research at Yale University by a young member of the faculty, coupled with the expectation for future outstanding contributions to our understanding of the causes and cures for cancer. The annual award, established through the ongoing generosity of the Yale College Class of 1961, will provide unrestricted funds to support the winner's cancer research. The initial award will be \$50,000. Nominees must be Yale faculty members age 45 or less, whose accomplishments are documented by published papers and awarded grants in any area of cancer research including seminal investigations into basic cancer biology, important translational or clinical studies, or critical population science studies.

Nomination Deadline: August 31, 2015

[Learn More >>](#)

Assay Validation For High Quality Markers For NCI-Supported Clinical Trials

The purpose of this Funding Opportunity Announcement (FOA) is to improve the development and validation of molecular diagnostics for the treatment, control, or prevention of cancer. This FOA includes, but is not limited to, the validation of prognostic, predictive or response markers for treatment and markers for cancer control or prevention trials. Applicants should have an assay that works in human samples and whose importance is well justified for development into a clinical assay. In addition, analytical validation of assays for these markers should be achieved when the application is submitted so that clinical validation may be achieved with little further analytical validation needed. This supplement may be used to support acquisition of specimens from retrospective or prospective studies from NCI-supported or other clinical trials. Clinical laboratory staff, technical and other needs must be an integral part of the application. Assays proposed for this FOA may be used to validate existing assays for use in other cancer clinical trials, observational studies or populations. Projects proposed for this FOA will require multi-disciplinary interaction and collaboration among scientific investigators, clinicians, statisticians and clinical

laboratory scientists and staff. This FOA is not intended to support trials that assess the clinical utility of a marker/assay but is intended to develop assays to the point where their clinical utility could be assessed in other trials.

Application Deadline: October 7, 2015

[Learn More >>](#)

Smoking Cessation within the Context of Lung Cancer Screening

The goal of this Funding Opportunity Announcement (FOA) is to improve the effectiveness and/or implementation of smoking cessation interventions delivered to current smokers who undergo low-dose computed tomography (LDCT) lung cancer screening. The proposed projects must be aimed at determining:

- a) the key components and characteristics of an effective smoking cessation intervention delivered in the LDCT setting; and/or
- b) characteristics of an implementation strategy to optimally incorporate existing evidence-based smoking cessation intervention(s) into the LDCT setting.

Application Deadline: October 8, 2015

[Learn More >>](#)

Prostate, Lung, Colorectal and Ovarian Cancer (PLCO) Screening Trial Funding Opportunity

Briefly, this funding opportunity is aimed at advancing research in cancer etiology and early detection biomarkers, utilizing the advantages of the unique biorepository resources of the NCI-sponsored Prostate, Lung, Colorectal and Ovarian Cancer (PLCO) Screening Trial. The PLCO biorepository offers high quality, pre diagnostic, serial blood samples (serum/plasma/DNA/red cells/cryo-preserved whole blood) ideal for investigation of the causes and the natural history of various cancers and for pivotal validation of promising blood-based early detection biomarkers. The FOA supports biochemical and genetic analysis of cancer risk as well as discovery and validation of early detection biomarkers. The proposed research must involve the use of PLCO biospecimens.

Application Deadline: February 17, 2016

[Learn More >>](#)

Recent Publications

DNA-dependent targeting of cell nuclei by a lupus autoantibody.

Weisbart RH, Chan G, Jordaan G, Noble PW, Liu Y, Glazer PM, Nishimura RN, Hansen JE. Sci Rep. 2015 Jul 9;5:12022.

[Learn More >>](#)

Emerging Agents and New Mutations in EGFR-Mutant Lung Cancer.

Ayeni D, Politi K, Goldberg SB. Clin Cancer Res. 2015 Jul 13.

[Learn More >>](#)

Treating patients with metastatic castration-resistant prostate cancer: a comprehensive review of available therapies.

Crawford ED, Higano CS, Shore ND, Hussain M, Petrylak DP. J Urol. 2015 Jul 18.

[Learn More >>](#)

Ubi4A is required for insulin-induced Akt plasma membrane translocation through promotion of Arp2/3-dependent actin branching.

Zhao Y, Lin Y, Zhang H, Mañas A, Tang W, Zhang Y, Wu D, Lin A, Xiang J. Proc Natl Acad Sci U S A. 2015 Jul 20.

[Learn More >>](#)

In vitro and in vivo studies of the combination of IGF1R inhibitor figitumumab (CP-751,871) with HER2 inhibitors trastuzumab and neratinib.

Chakraborty AK, Zerillo C, DiGiovanna MP. Breast Cancer Res Treat. 2015 Jul 21.

[Learn More >>](#)

Molecular Testing in Myelodysplastic Syndromes for the Practicing Oncologist: Will the Progress Fulfill the Promise?

Nazha A, Sekeres MA, Gore SD, Zeidan AM. Oncologist. 2015 Jul 20.

[Learn More >>](#)

Genomic landscape of cutaneous T cell lymphoma.

Choi J, Goh G, Walradt T, Hong BS, Bunick CG, Chen K, Bjornson RD, Maman Y, Wang T, Tordoff J, Carlson K, Overton JD, Liu KJ, Lewis JM, Devine L, Barbarotta L, Foss FM, Subtil A, Vonderheid EC, Edelson RL, Schatz DG, Boggon TJ, Girardi M, Lifton RP. Nat Genet. 2015 Jul 20.

[Learn More >>](#)

Regional-Level Correlations in Inappropriate Imaging Rates for Prostate and Breast Cancers: Potential Implications for the Choosing Wisely Campaign.

Makarov DV, Soulos PR, Gold HT, Yu JB, Sen S, Ross JS, Gross CP. JAMA Oncol. 2015 May 1;1(2):185-94.

[Learn More >>](#)

EGFR Mutations in Non-Small-Cell Lung Cancer: Find, Divide, and Conquer.

Morgensztern D, Politi K, Herbst RS. JAMA Oncol. 2015 May 1;1(2):146-8.

[Learn More >>](#)

Geographic Variation of Hospice Use Patterns at the End of Life.

Wang SY, Aldridge MD, Gross CP, Canavan M, Cherlin E, Johnson-Hurzeler R, Bradley E. J Palliat Med. 2015 Jul 14.

[Learn More >>](#)

Emerging Agents and New Mutations in EGFR-Mutant Lung Cancer.

Ayeni D, Politi K, Goldberg SB. Clin Cancer Res. 2015 Jul 13.

[Learn More >>](#)