

February 3, 2017

Announcements

Yale Cancer Center Awards Prizes at Conclave

It was an honor to welcome Yale Cancer Center members and our physicians, nurses, and clinical staff from Smilow Cancer Hospital and our Care Centers to our annual Conclave. The evening was a nice opportunity to meet more of our organization, and I was especially honored to have the opportunity to recognize so many of the wonderful accomplishments YCC and Smilow achieved in 2016.

I look forward to continuing our momentum into 2017 and recognize that as we plan for the future, we come from a position of great strength. The highlight of the evening was the presentation of the Yale Cancer Center Lifetime Achievement, Research, and Clinical prizes. The senior leadership team reviewed the nominations and selected the recipients of these 7 awards in recognition of their outstanding contribution to cancer research and care.

from the desk of
Charles S. Fuchs, MD, MPH
Director, Yale Cancer Center
and Physician-in-Chief
Smilow Cancer Hospital

Yale
NewHaven
Health
Smilow Cancer
Hospital

Yale **CANCER
CENTER**

A Comprehensive Cancer Center Designated
by the National Cancer Institute



Recent News

Read recent articles featuring experts from Yale Cancer Center

[News Center >>](#)



Roy Herbst and Vincent DeVita

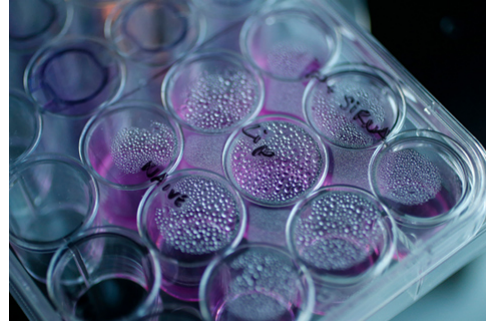
Vincent T. DeVita, Jr., MD, the Amy and Joseph Perella Professor of Medicine, was honored with the **Yale Cancer Center Lifetime Achievement Award**. Dr. Roy Herbst presented the award to Dr. DeVita. Dr. DeVita spent the early part of his career at the National Cancer Institute (NCI), and in 1980, the President of the United States appointed him director of the NCI and the National Cancer Program, a position he held until 1988. Dr. DeVita has earned international recognition for his accomplishments as a pioneer in the field of oncology. At the NCI, he developed MOPP a combination chemotherapy cure for Hodgkin's lymphoma, proving that drugs can cure advanced cancers. He was the Director of Yale Cancer Center from 1993 to 2003. He is a former president of the American Cancer Society and the co-editor of *Cancer: Principles & Practice of Oncology*, a textbook of cancer medicine. Most recently, Dr. DeVita co-authored the acclaimed book, *The Death of Cancer*, with his daughter, Elizabeth DeVita-Raeburn.



Rogério Lilenbaum, Stuart Seropian, Louis Chênevert, and Charles Fuchs

LATEST ARTICLES:

Researchers at Yale have taken steps toward a 'completely unexpected' new way to treat brain cancer



[Read More >>](#)

Why doctors may keep a patient awake for brain surgery



[Read More >>](#)

Soccer players' cancers ignite debate over turf safety



[Read More >>](#)

Stuart Seropian, MD, was honored with the **Yale Cancer Center Award for Clinical Excellence**.

Dr. Rogerio Lilenbaum and Louis Chênevert presented the award. Dr. Lilenbaum commented, "He connects with his patients and walks hand and hand, half a step ahead to clear any roadblocks that his patients have." Mr. Chênevert shared his personal experience with the care Dr. Seropian provides his patients, saying, "the support every step of the way is absolutely extraordinary."



Leslie Blatt and Ruth McCorkle

Leslie Blatt, APRN, received the fifth annual **Ruth McCorkle Oncology Advanced Practice Provider Award** presented by Catherine Lyons and Ruth McCorkle. Leslie is one of the founders of the Palliative Care Service at Yale New Haven Hospital and the program developed at Smilow Cancer Hospital. In her nomination, her colleagues wrote, "She is a key sounding board for the team; she has always made herself available to help us struggle through the most complex clinical cases, difficult emotional responses, and leadership challenges. But most importantly, she is a true role model of deeply compassionate patient and family care."

Richard Kibbey, MD, PhD, received the Yale Cancer Center Basic Science Research Prize for his paper, *Integrated, Step-Wise, Mass-Isotopomeric Flux Analysis of the TCA Cycle*, published in *Cell Metabolism*. Dr. Kibbey is an Associate Professor of Medicine (Endocrinology) and of Cellular and Molecular Physiology and a member of the Signal Transduction Research Program. Dr. David Stern presented the award.

Dr. Harold Tara Appointed Medical Director of Smilow Care Centers in Trumbull & Fairfield



[Read More >>](#)

Expert Discusses Keytruda's Future in Lung Cancer



[Read More >>](#)

Reducing Treatment Doses in Head and Neck Cancer to Improve QOL



[Read More >>](#)

Join Smilow Cancer Hospital on Facebook

Jeffrey Townsend, PhD, received the Yale Cancer Center Translational Research Prize for his paper, *Early and multiple origins of metastatic lineages within primary tumors*, published in the *Proceedings of the National Academy of Sciences*. Dr. Townsend is an Associate Professor of Biostatistics, Director of Bioinformatics for the Yale Center for Analytical Sciences, and a member of the Genomics, Genetics, and Epigenetics Research Program. Dr. Joann Sweasy presented the award to him.

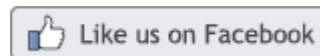
Madhav Dhodapkar, MBBS, received the Yale Cancer Center Clinical Research Prize for his paper, *Clonal Immunoglobulin against Lysolipids in the Origin of Myeloma*, published in the *New England Journal of Medicine*. Dr. Dhodapkar is the Arthur H. and Isabel Bunker Professor of Medicine (Hematology), Chief of Hematology, and co-director of the Cancer Immunology Research Program. Dr. Howard Hochster presented the award to him.

Shi-Yi Wang, MD, PhD, received the Yale Cancer Center Population Science Research Prize for his paper, *Preoperative Breast Magnetic Resonance Imaging and Contralateral Breast Cancer Occurrence Among Older Women with Breast Cancer*, published in the *Journal of Clinical Oncology*. Dr. Wang is an Assistant Professor of Epidemiology and a member of the Cancer Prevention and Control Research Program. Dr. Xiaomei Ma presented the award to him.

Notables

Research led by **Roy S. Herbst, MD, PhD** was selected by the **American Society of Clinical Oncology** for inclusion in **Clinical Cancer Advances 2017**, the Society's annual review of progress against cancer and emerging trends in the field. The study, which established pembrolizumab as a new standard option for patients with previously treated, advanced non-small cell lung cancer, is featured as one of the year's major achievements in clinical cancer research and care.

Laura J. Morrison, MD, FAAHPM, Director of the Yale Hospice and Palliative Medicine Fellowship Program, has been selected by the **Accreditation Council for Graduate Medical Education** to



LATEST POSTS:

Join us to help create bracelets to be packaged and gifted to Smilow Cancer Hospital patients by our staff. Kim Dwyer leads Bracelets of Hope on Tuesday, February 7th from 10AM-12PM. Anyone 16 and older receiving cancer treatment at Smilow Cancer Hospital or at any of our care centers and their caregivers are welcome to attend.



[Read More >>](#)

Tomorrow is World Cancer Day! This Saturday, people and institutions all over the world will join together to raise awareness and push governments and individuals to take action in the fight against cancer.

Visit <http://www.worldcancerday.org/materials> to download pictures to post to your Facebook page and tag Smilow Cancer Hospital to raise awareness about cancer research, treatment, and care.



[Read More >>](#)

When Sharee learned that three of her children had sickle cell disease, she prayed for a miracle that would cure them. That miracle came when her daughter Unity, now 17, was born. In an incredibly rare occurrence, her bone marrow was a perfect match for all three of her siblings.

participate in the Interpersonal and Communication Skills Working Group for the next version of resident and fellow trainee Reporting Milestones. The Working Group is developing a set of national Milestone themes to be used as a template for all specialties.

Preston Sprengle, MD, received a three-year appointment as **Cancer Liaison Physician** for the cancer program at **VA Connecticut Healthcare System**. Cancer Liaison Physicians are an integral part of cancer programs accredited by the American College of Surgeons Commission on Cancer (CoC).

Please join the family and friends of **Dr. Lawrence Solomon** for a memorial service on Saturday, February 18 at 11:00am at the Unitarian Society of New Haven, 700 Hartford Turnpike, Hamden, CT. Dr. Solomon was a deeply respected and loved physician by colleagues and patients alike. Dr. Solomon, in collaboration with Leslie Blatt, APRN, founded the Yale New Haven Hospital Palliative Care Program, providing supportive care to patients and their families facing serious illness. His leadership and pioneering work in Palliative Care at Yale resulted in the foundation of a palliative care program that continues to thrive and expand to serve our most vulnerable patients.

Research in the News

Yale scientists identify key defect in brain tumor cells

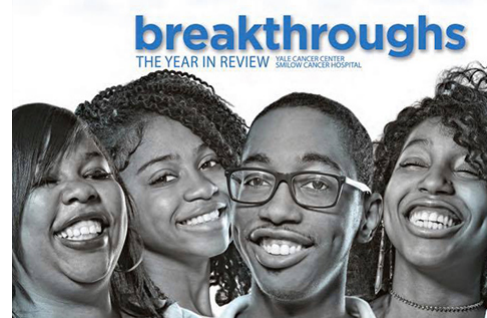
In a new study, Yale Cancer Center researchers identified a novel genetic defect that prevents brain tumor cells from repairing damaged DNA. They found that the defect is highly sensitive to an existing FDA-approved drug used to treat ovarian cancer - a discovery that challenges current practice for treatment of brain tumors and other cancers with the same genetic defect, said the scientists.

[Read More >>](#)

Clue to how cancer cells spread

In a second human case, a Yale-led research team has found that a melanoma cell and a white blood

"I prayed for a miracle and instead, thanks to the team at Yale, I got four of them."



[Read More >>](#)

The American Cancer Society estimates that the United States will see over 40,000 new liver cancer diagnoses, and predicts nearly 30,000 deaths will come from the disease in 2017. Recognizing the need for a team of researchers and clinicians dedicated to treating and studying liver cancer, Smilow Cancer Hospital has launched a new Liver Cancer Program for our patients. Mario Strazzabosco, MD, PhD, an internationally known liver cancer expert, will be leading this venture as we set out to ensure our patients with liver cancer are receiving the best possible care.




[Read More >>](#)

Follow Yale Cancer Center on Twitter

Follow us on 

LATEST TWEETS:

 #Eating well is an important step towards staying #healthy & lowering #cancer risk Try prepping ahead @ACS_Research

cell can fuse to form a hybrid with the ability to metastasize. The finding provides further insight into how melanoma and other cancers spread from solid tumors with implications for future treatment.

[Read More >>](#)

New Member Highlight: Nadya Dimitrova

Drs. Marcus Bosenberg and Lajos Pusztai, Co-Leaders of Genomics, Genetics and Epigenetics (GGE) Research Program are proud to welcome Nadya Dimitrova, PhD, Assistant Professor in the Molecular, Cellular and Developmental Biology Department, to the program. Dr. Dimitrova's background includes work on the role of 53BP1 in Titia DeLange's lab at Rockefeller University, and the role of long non-coding (lnc) RNAs in lung cancer using state-of-the-art mouse models in Tyler Jacks' lab at MIT. She continues this research here at Yale with support from the American Cancer Society and the Lung Cancer Research Foundation.



Employee Profile: Constance Smith

🐦 Peter Glazer and @ranjitbindra publish study finding PARP inhibitors may be effective in certain #BrainTumors#btsm

🐦 Researchers @YaleCancer have taken steps toward a 'completely unexpected' new way to treat brain cancer #btsm

🐦 .@US_FDA Approvals of Anticancer Therapies Nov 1, 2015 - Oct 31, 2016 via @ASCO

🐦 .@ASCO names research by @DrRoyHerbstYale est pembro for pts w/ prev Rx adv NSCLC as one of 2016 top advances #lcsm

🐦 .@jacksonlab posted a wonderful feature on @YaleCancer's Joann Steitz "A Champion for #Women in #Science"

🐦 Older patients with #lungcancer (NSCLC) experience high treatment burden @CPresGerOncMD via @HemOncToday

🐦 Join us for a State of the Science Summit on #ProstateCancers and GU Cancers on March 22 @OnLive@DanielPetrylak

🐦 Looking for #healthy meal ideas for the new year? @ACS_Research has released a new #cookbook, learn more here:

🐦 We're happy to welcome Dr. Charles Lee @jacksonlab to present @YaleCancer grand rounds.

Closer to Free

closer to free

The fund to advance cancer research and enhance patient care

Upcoming Events

February 3; 12PM

As the inpatient social worker for the Adult Sickle Cell Program at Yale, Constance J. Smith, LCSW, is focused on providing emotional and psychosocial support to patients. Constance works with patients and providers to address the needs and concerns of the patient.



Patients with sickle cell disease can spend anywhere from one to two days, to one to two weeks in the hospital at a time and face many challenges both inside and outside the hospital. Constance's role is to help patients explore coping skills as well as resources that will help manage their chronic pain. She participates in daily rounds with the attending physician and APRN and discusses the plan of care for the day and any issues.

"Patients with sickle cell disease can have multiple psychosocial barriers in addition to their disease," said Constance. "Some patients face complex psychosocial stressors that can impact their disease and exacerbate a sickle cell crisis. My goal is to work to alleviate stressors and to help patients feel supported. I am humbled every day I get to work with the adult sickle cell population. I enjoy my job and am always in awe of the resiliency found in patients with chronic illnesses."

Bonnie Indeck, LCSW, Manager of Oncology Social Work at Smilow, commented, "Constance is an outstanding social worker, providing the utmost in professional clinical care to all her patients, as well as being available to help and support staff when issues arise. Her knowledge and skills make her job look easy, but we all understand the challenges she faces on a daily basis. It is such a pleasure to have her on the oncology social work team - she is such an asset!"

YCC Research in Progress Seminar

NP4-101B

PLEKHA5, a key mediator of brain tropism in melanoma metastasis

Lucia Jilaveanu, MD, PhD

[Learn More >>](#)

February 5; 7:30PM

Yale Cancer Answers

WNPR 90.5

Liver Cancer Program

Mario Strazzabosco, MD, PhD

[Learn More >>](#)

February 6; 11AM

YCC Radiobiology and Radiotherapy Research Program

SHM I-304

Nuclear Architecture Coordinates Gene Copy Number Variation to Promote Adaptation

Paolo Colombi, PhD

[Learn More >>](#)

February 6; 2PM

Yale Cancer Biology Institute Research Seminar

Hope 216

Investigating Genetic and Environmental Contributors to Pancreatic Cancer

Mandar Muzumdar, PhD

[Learn More >>](#)

February 7; 9:30AM

Pathology Research in Progress Talk

TAC N-107

Sensitivity of Uncommon EGFR Exon 19 Deletion Mutants to Tyrosine Kinase Inhibitors in Lung Adenocarcinoma

Anna Truini, MS

Transmembrane Protein 86a (TMEM86a) in Macrophages Protects Atherogenesis as a Lysoplasmalogenase

Xinbo Zhang, PhD, MD

[Learn More >>](#)

February 7; 12PM

YCC Grand Rounds

Park Street Auditorium

Funding and Award Opportunities

All current funding opportunities are archived on the Yale Cancer Center website, and searchable by topic, funding agency, and due date. Please check the site often for new opportunities.

[Learn More >>](#)

NIH Reducing Overscreening for Breast, Cervical, and Colorectal Cancers among Older Adults (R01)

The purpose of this FOA is to promote research on interventions, based in healthcare settings, designed to reduce overscreening for breast, cervical, or colorectal cancers among average-risk older adults.

Application Deadline, Cycle 1:

February 5, 2017

[Learn More >>](#)

NIH Consortium for Pancreatic Ductal Adenocarcinoma (PDAC) Translational Studies on the Tumor Microenvironment (U01)

The purpose of this FOA is to stimulate research in the area of PDAC microenvironment with the ultimate goal of understanding the interaction between tumors and the microenvironment.

Letter of Intent Due: February 7, 2017

[Learn More >>](#)

NIH Resource Center for the Consortium for Pancreatic Ductal Adenocarcinoma (PDAC) Translational Studies (U24)

This FOA invites applications to establish a Resource Center for the Consortium for PDAC Translational Studies on the Tumor Microenvironment (Consortium) that has the ultimate goal to design new immunotherapy and combination interventions in PDAC.

Letter of Intent Due: February 7, 2017

[Learn More >>](#)

Yale Liver Center Pilot Funding

The NIH P30 Liver Center grant provides for the annual submission of pilot projects (up to \$25,000

Immunotherapies in Lymphoid Malignancies

Gottfried von Keudell, MD, PhD

CBIT: Supporting Your MedTech Innovation

Margaret Cartiera, PhD

[Learn More >>](#)

February 8; 12PM

YSPH/EHS Seminar

Winslow Auditorium

Reproducible Research: What It Means for Epidemiology

John P.A. Ioannidis, MD, DSc

[Learn More >>](#)

February 8; 1PM

YCC Cancer Metabolism Interest Group Research Program

SHM B-201

Coordination of Inflammatory and Metabolic Programs for Tissue Tolerance

Andrew Yang

[Learn More >>](#)

February 8; 6:30PM

YSPH Evening Colloquium in Healthcare Leadership-Special Night

Brady Auditorium, B-131

Informal Discussion

Elizabeth (Betsy) H. Bradley, PhD, MBA

[Learn More >>](#)

February 9; 12PM

C&M Physiology Recruitment Seminar

SHM B145

Insulin Resistance and Colon Cancer: Pathogenic Mechanisms and Therapeutic Strategies

Rachel J. Perry, PhD

[Learn More >>](#)

February 9; 12:30PM

Pathology Grand Rounds

LMP 1094

Uterine Mesenchymal Tumors: An Expanding Spectrum

Bradley Joseph Quade, MD, PhD

[Learn More >>](#)

direct costs each) from both Yale and non-Yale Liver Center investigators as approved by the Executive Committee.

Letter of Intent Due: February 10, 2017

[Learn More >>](#)

Utilizing the PLCO Biospecimens Resource to Bridge Gaps in Cancer Etiology and Early Detection Research (U01)

This Funding Opportunity Announcement (FOA) encourages the submission of applications that propose to advance research in cancer etiology and early detection biomarkers, utilizing the advantages of the unique biorepository resources of the NCI-sponsored Prostate, Lung, Colorectal, and Ovarian Cancer (PLCO) Screening Trial.

Application Due Date:

[Learn More >>](#)

NIH Reducing Overscreening for Breast, Cervical, and Colorectal Cancers among Older Adults (R21)

The purpose of this FOA is to promote research on interventions, based in healthcare settings, designed to reduce overscreening for breast, cervical, or colorectal cancers among average-risk older adults.

Application Deadline, Cycle 1:

February 16, 2017

[Learn More >>](#)

2017 ALCF-IASLC Joint Fellowship Award

The Bonnie J Addario Lung Cancer Foundation, in collaboration with the International Association for the Study of Lung Cancer is pleased to announce their second joint Fellowship Award to support novel, innovative and translational research with potential of high clinical impact on the early detection of lung cancer.

Application Deadline: March 1, 2017

[Learn More >>](#)

Stand Up To Cancer - LUNgevity - American Lung Association Lung Cancer Interception Dream Team

This grant will provide up to \$7 million to solve key problems in lung cancer interception research.

February 9; 2:30PM

Smilow Cancer Genetics and Prevention Program Seminar

SRC, Suites 107-109

[Learn More >>](#)

February 12; 7:30PM

Yale Cancer Answers

WNPR 90.5

[Learn More >>](#)

February 13; 11AM

YCC Radiobiology and Radiotherapy Research Program

SHM I-304

Oncometabolites Suppress Homologous Recombination and Induce PARP Inhibitor Sensitivity

Parker Sulkowski

[Learn More >>](#)

February 13; 2PM

Yale Cancer Biology Institute Research Seminar

Hope 216

Chromosome Shattering and Hypermutation from Telomere Fusion

John Maciejowski, PhD

[Learn More >>](#)

February 13; 2PM

YCC Meet and Greet the Director

WWW 208

Dr. Charles Fuchs

[Learn More >>](#)

February 14; 9:30AM

Pathology Research in Progress Talks

TAC N-107

TBA

Agedi Boto, MD, PhD and Wesley Cai

[Learn More >>](#)

February 14; 12PM

YCC Grand Rounds

Park Street Auditorium

BRCAness in the Brain? Exploiting a novel link between oncometabolites and DNA repair

Letter of Intent Due: March 8, 2017

[Learn More >>](#)

SU2C-Lustgarten Foundation Pancreatic Cancer Interception Dream Team

This grant will provide up to \$7 million over a four-year term to advance innovative approaches to intercept the disease-causing process.

Letter of Intent Due: March 22, 2017

[Learn More >>](#)

National Compassionate Caregiver of the Year Award

The National Compassionate Caregiver of the Year (NCCY) Award is a national recognition program that elevates excellence in compassionate healthcare.

Deadline for Nominations: March 31, 2017

[Learn More >>](#)

Recent Publications

A multi species evaluation of the radiation dosimetry of [11C]erlotinib, the radiolabeled analog of a clinically utilized tyrosine kinase inhibitor.

Petrulli JR, Hansen SB, Abourbeh G, Yaqub M, Bahce I, Holden D, Huang Y, Nabulsi NB, Contessa JN, Mishani E, Lammertsma AA, Morris ED.

Nucl Med Biol. 2017 Jan 2;47:56-61.

[Read More >>](#)

A Melanoma Lymph Node Metastasis with a Donor-Patient Hybrid Genome following Bone Marrow Transplantation: A Second Case of Leucocyte-Tumor Cell Hybridization in Cancer Metastasis.

LaBerge GS, Duvall E, Grasmick Z, Haedicke K, Pawelek J.

PLoS One. 2017 Feb 1;12(2):e0168581.

[Read More >>](#)

Ranjit Bindra, MD, PhD

Synthetic antibody isolation and development

Bryce Nelson, PhD

[Learn More >>](#)

February 15; 12PM

YCC Cancer Immunology Research Program

SHM I-304

Clinical Trials in Immunocellular Therapy of Cancer: Bridging the Translational Gap

Alexey Bersenev, MD, PhD

[Learn More >>](#)

February 16; 12PM

Section of Hematology / YCCEH Seminar

300 George St, rm 157

Liver Endothelial Cells in Iron Homeostasis Regulation

Jodie L. Babbit, MD

[Learn More >>](#)

February 16; 12:30PM

Pathology Grand Rounds

LMP 1094

Bladder Cancer Epidemiology: Strengthening Bonds with Omics

Nuria Malats, MD, PhD

[Learn More >>](#)

February 16; 2:30PM

Smilow Cancer Genetics and Prevention Program Seminar

SRC, Suites 107-109

[Learn More >>](#)

February 17; 12PM

YCC Research in Progress Seminar

NP4-101B

TBA

Barbara Burtness, MD

[Learn More >>](#)

KDM5 lysine demethylases are involved in maintenance of 3'UTR length.

Blair LP, Liu Z, Labitigan RL, Wu L, Zheng D, Xia Z, Pearson EL, Nazeer FI, Cao J, Lang SM, Rines RJ, Mackintosh SG, Moore CL, Li W, Tian B, Tackett AJ, Yan Q.

Sci Adv. 2016 Nov 18;2(11):e1501662.

[Read More >>](#)

"What if I do nothing?" The natural history of operable cancer of the alimentary tract.

Keshava HB, Rosen JE, DeLuzio MR, Kim AW, Detterbeck FC, Boffa DJ.

Eur J Surg Oncol. 2017 Jan 18.

[Read More >>](#)

Predictors of Tanning Dependence in White Non-Hispanic Females and Males.

Cartmel B, Bale AE, Mayne ST, Gelernter JE, DeWan AT, Spain P, Leffell DJ, Pagoto S, Ferrucci LM.

J Eur Acad Dermatol Venereol. 2017 Jan 27.

[Read More >>](#)

A multi species evaluation of the radiation dosimetry of [¹¹C]erlotinib, the radiolabeled analog of a clinically utilized tyrosine kinase inhibitor.

Petrulli JR, Hansen SB, Abourbeh G, Yaqub M, Bahce I, Holden D, Huang Y, Nabulsi NB, Contessa JN, Mishani E, Lammertsma AA, Morris ED.

Nucl Med Biol. 2017 Jan 2;47:56-61.

[Read More >>](#)

Novel approach for the detection of intraperitoneal micrometastasis using an ovarian cancer mouse model.

Alvero AB, Kim D, Lima E, Sumi NJ, Lee JS, Cardenas C, Pitruzzello M, Silasi DA, Buza N, Fahmy T, Mor G.

Sci Rep. 2017 Jan 25;7:40989.

[Read More >>](#)



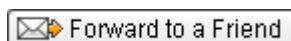
Submissions

Please submit your recent publication and grant announcements to:

Renee Gaudette

Director, Public Affairs and Marketing

renee.gaudette@yale.edu



Type II NKT Cells and Their Emerging Role in Health and Disease.

Dhodapkar MV, Kumar V.

J Immunol. 2017 Feb 1;198(3):1015-1021.

[Read More >>](#)

Challenges in Conducting Clinical Research on Patients With Advanced Melanoma.

Sznol M.

Cancer J. 2017 Jan/Feb;23(1):75-78.

[Read More >>](#)

From the Guest Editors: Recent Advances and Evolving Challenges in Treating Unresectable Melanoma.

Weiss SA, Kluger HM.

Cancer J. 2017 Jan/Feb;23(1):1-2.

[Read More >>](#)

Management of Brain Metastases in Tyrosine Kinase Inhibitor-Naïve Epidermal Growth Factor Receptor-Mutant Non-Small-Cell Lung Cancer: A Retrospective Multi-Institutional Analysis.

Magnuson WJ, Lester-Coll NH, Wu AJ, Yang TJ, Lockney NA, Gerber NK, Beal K, Amini A, Patil T, Kavanagh BD, Camidge DR, Braunstein SE, Boreta LC, Balasubramanian SK, Ahluwalia MS, Rana NG, Attia A, Gettinger SN, Contessa JN, Yu JB, Chiang VL.

J Clin Oncol. 2017 Jan 23;JCO2016697144.

[Read More >>](#)

Comparison of clinical outcomes and prognostic utility of risk stratification tools in patients with therapy-related vs. de novo myelodysplastic syndromes: A report on behalf of the MDS clinical research consortium.

Zeidan AM, Al Ali N, Barnard J, Padron E, Lancet JE, Sekeres MA, Steensma DP, DeZern A, Roboz G, Jabbour E, Garcia-Manero G, List A, Komrokji R.

Leukemia. 2017 Jan 23.

[Read More >>](#)