

June 16, 2017

Announcements

Brigid Killelea Named Interim Director of Breast Center

I am pleased to announce that Dr. Brigid Killelea, MD, MPH, FACS, has accepted the position of Interim Director of the Breast Center at Smilow Cancer Hospital. Dr. Killelea succeeds Dr. Anees Chagpar, who has led the Center since 2010 and will continue caring for patients in the breast center and her leadership role as the Assistant Director of Global Oncology at Yale Cancer Center. During her tenure as Director, Dr. Chagpar built the foundation for the Center at Smilow. Her work advanced the level of care available to our patients



with breast cancer, and she was instrumental in the growth of clinical trials in the breast program at an unprecedented rate. The findings of her SHAVE trial, published in the *New England Journal of Medicine* in 2015, changed the standard practice of defining surgical margins for lumpectomies throughout the world.

A leading voice in the breast surgery community, Dr. Killelea joined Yale Medicine and Smilow Cancer Hospital in 2009, following completion of a dual fellowship in breast surgical oncology. She earned a Master of Public Health degree from Johns Hopkins University and received her medical doctorate from the University of Connecticut School of Medicine. I am confident that Dr. Killelea's achievements and reputation as a skilled and compassionate surgeon and effective administrator will ensure her success as Interim Director of the Breast Center.

Please join me in congratulating both Brigid for her new role, and

from the desk of
Charles S. Fuchs, MD, MPH
Director, Yale Cancer Center
and Physician-in-Chief
Smilow Cancer Hospital

Yale
NewHaven
Health
Smilow Cancer
Hospital

Yale CANCER CENTER
A Comprehensive Cancer Center Designated
by the National Cancer Institute

Recent News

Read recent articles featuring experts from Yale Cancer Center

[News Center >>](#)

LATEST ARTICLES:



Indoor Tanning Still Accessible to Young People: Despite Bans

[Read More >>](#)

thank Anees for the accomplishments of the Breast Center under her leadership.

Medical Oncology and Hematology Fellows Graduate



It was a pleasure to celebrate the many accomplishments of our graduating class of fellows earlier this week. Educating our next generation of oncologists and giving them access to clinical care and basic and translational research opportunities is one of the most important missions of our Cancer Center. Under the leadership of Dr. Jill Lacy and Dr. Nikolai Podoltsev, our program continues to strengthen and their dedication to teaching was evident.

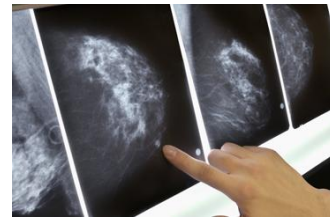


Dr. Lacy received the 2017 Annual David S. Fischer Teaching Award for Outstanding Teaching and Mentoring of Fellows in Medical Oncology



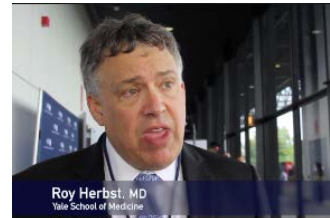
Antonio Giraldez Named Chair of Genetics

[Read More >>](#)



Some Small Tumors in Breasts May Not Be So Bad After All

[Read More >>](#)



Symptom Monitoring During Routine Cancer Treatment

[Read More >>](#)



Regular Brisk Walk May Help Reduce the Risk of Dying from Cancer

[Read More >>](#)

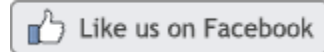


Dr. Podoltsev received the 2017 Annual David S. Fischer Teaching Award for Outstanding Teaching and Mentoring of Fellows in Hematology



Janaki Parameswaran, MD was awarded the Hematology Annual Research Award for Outstanding Research

Join Yale Cancer Center on Facebook



LATEST POSTS:

On average, only about seven percent of pancreatic cancer patients live five years past diagnosis - Mark Tardie has been cancer free for 13 now. Listen to his Survivor Story, in which he details the importance of showing up for treatment and relives some of the best advice he received



from a fellow patient.

[Read More >>](#)

To kick off International Men's Health Week, we'd like to draw attention to the importance of prostate screening for men starting at around age 40, depending on risk factors. Other than skin cancer, prostate cancer is the most common cancer in American men, and the third leading cause of death in American men. Healthy screening habits are crucial to timely detection and effective treatment.



Michael Cecchini, MD, was awarded the Annual Award for Outstanding Research in Medical Oncology

Notables

Lieping Chen, MD, PhD, the United Technologies Corporation Professor of Cancer Research and Professor of Immunobiology, Dermatology, and Medicine (Medical Oncology) and Co-Leader of the Cancer Immunology Program at Yale Cancer Center, has been named one of the 2017 recipients of the prestigious **Warren Alpert Foundation Prize**. The Prize honors those who have made contributions to the field of cancer immunology. The five honorees, who will share a \$500,000 prize, will be recognized at a symposium on October 5 at Harvard Medical School.

[Learn More >>](#)

Suzanne Evans, MD, MPH, Associate Professor of Therapeutic Radiology, has been named an Executive Editor for **Practical Radiation Oncology** (PRO), a journal published by ASTRO. Dr. Evans was selected for this prestigious leadership role after serving as a senior editor of the patient safety and quality improvement (QI) section of the journal for several years. Her term will begin at the ASTRO annual meeting in September.

Ranjit Bindra, MD, PhD, Associate Professor of Therapeutic Radiology and a member of Yale Cancer Center's Radiobiology and Radiotherapy Research Program, has been awarded a **Yale Cancer Center Co-Pilot Award** to study Exploitation of 2-HG conferred vulnerabilities in IDH1/2 mutant MDS/AML in pre-clinical PDX models, along with **Stephanie Halene, MD, PhD**, a



[Read More >>](#)

According to new studies recently presented at the annual meeting of the American Society of Clinical Oncology, just 25 minutes of walking per day can not only reduce cancer risk, but can also help patients who are going through treatment. One trial studied cancer patients and determined that 150 minutes of activity per week had a positive effect on both survival rate and the disease's progression.

Melinda Irwin, PhD, MPH, Co-Leader of the Cancer Prevention and Control Program at Yale Cancer Center, noted that "After treatment, weight loss is the most powerful thing you can do. It is the next best pill to treatment and it is free and has no side effects."



[Read More >>](#)

Members of Yale Cancer Center and Smilow Cancer Hospital recently traveled to Chicago to participate in the annual meeting of the

American Society of Clinical Oncology, which brings together over 30,000

member of the Genomics, Genetics and Epigenetics Research Program.

Maximilian Stahl, MD, a medical resident in Internal Medicine has earned a **Hematology Opportunities for the Next-Generation of Research Scientists (HONORS)** award from the **American Society of Hematology (ASH)**. His research, under the mentorship of Dr. Amer Zeidan and Dr. Steven Gore, is focused on outcomes and their predictors of immunosuppressive therapy in myelodysplastic syndromes.

Maggie Zampano, RN, OCN, MSCN, was awarded the **Joel Silidker Award** by the Department of Obstetrics, Gynecology & Reproductive Sciences in recognition of her dedication to the healthcare team and collaboration with her colleagues. The plaque reads, "Work hard, play hard every day. Cherish the joy in everything. Always smile."

Nadya Dimitrova, PhD, Assistant Professor of Molecular, Cellular and Developmental Biology and a member of Yale Cancer Center's Genomics, Genetics and Epigenetics Research Program, has been named a **Pew-Stewart Scholar for Cancer Research**. The Pew-Stewart Scholars Program for Cancer Research is a national initiative designed to support promising early career scientists whose research will accelerate discovery and advance progress to a cure for cancer.

Patrys Limited, a therapeutic antibody development company, has licensed from Yale University the worldwide rights to develop the novel lupus anti-DNA antibody 3E10 as a tumor-targeting agent. 3E10 is attracted to the DNA released by dying cancer cells and preferentially delivers conjugated drug-loaded nanoparticles to tumors. As the tumors respond to treatment they release more DNA, which attracts more 3E10-nanoparticles in a self-reinforcing cycle that significantly increases the efficacy of the drug therapy. Patrys will collaborate with Yale Cancer Center members and co-inventors, **Jiangbing Zhou, PhD** and **James Hansen, MD, MS** to further develop this technology.

Research in the News

Mammograms: Are we overdiagnosing small tumors?

An analysis of breast cancer data revealed that many small breast cancers have an excellent prognosis because they are inherently slow growing, according to Yale Cancer Center experts. Often, these cancers will not grow large enough to become significant within a patient's lifetime and subsequently

oncology professionals from across the globe to discuss the latest in cancer research and treatment.

Today, we host our 7th annual Yale ASCO Review to discuss the highlights from the conference.



[Learn More >>](#)

During Yale School of Medicine's commencement, multiple Yale Cancer Center members received recognition for their contributions to the teaching of medical school students. Congratulations to Tamar Taddei, MD, for receiving the Alvan R. Feinstein Award for outstanding teaching of clinical skills.



[Learn More >>](#)

Congratulations to Michael Cecchini, MD, and Brian Henick, MD, both recipients of the Conquer Cancer Foundation's 2017 Young Investigator Award. The Award exists to fund quality research and to assist young researchers in the transition from a fellowship program to a faculty appointment.

early detection could lead to overdiagnosis, said the researchers. In contrast, large tumors that cause most breast cancer deaths often grow so quickly that they become intrusive before they can be detected by screening mammography, they note.

The study, published June 8 in the *New England Journal of Medicine*, questions the value of breast cancer early detection.

[Read More >>](#)

Immunotherapy Combination Shows Promise in Early Stage Triple Negative Breast Cancer

A Yale Cancer Center clinical trial combining the immune checkpoint inhibitor (durvalumab/MEDI4736) with chemotherapy as preoperative treatment for early stage triple negative breast cancer disclosed a 71% pathologic complete response to the combination treatment in the initial phase I trial. By comparison, chemotherapies alone produce a pathologic complete response rate of only around 35-40% for women with triple negative breast cancer (TNBC).

"The preliminary efficacy result from a Phase I/II trial suggests very high activity, with a 71% pathologic complete response rate. This is important because women with breast cancer who achieve complete response have excellent long-term survival," said Lajos Pusztai, MD, lead author of the study.

[Read More>>](#)

Phase I Study Advances New Option for Urothelial Cancers

A recent study by Yale Cancer Center researchers revealed a 41% response to the antibody drug, enfortumab vedotin, by metastatic urothelial (mUC) tumors in a phase I clinical trial. Urothelial cancers include cancers of the bladder, ureters, and renal pelvis.

The phase I trial sought to determine the safety and tolerability of enfortumab vedotin, which targets the protein Nectin-4, in the treatment of advanced urothelial cancer. Overall, the study found that enfortumab vedotin demonstrated a favorable tolerability profile with encouraging anti-tumor activity in patients previously treated for mUC, including patients where prior immune checkpoint inhibitor therapies had failed.

[Read More>>](#)

Development Update



[Learn More >>](#)

Follow Yale Cancer Center on Twitter

Follow us on [twitter](#)

LATEST TWEETS:



Thank you @pewhealth for honoring Nadya Dimitrova's outstanding work!



Speaker offers key takeaways in head and neck cancer. @YaleCancer #hncsm



Our fellows @YaleCancer @YNHH graduation tonight at the Union League in New Haven



Dr. Ronald Salem presents on .@YaleMed's contributions to improve the #Whipple procedure for



Yale Cancer Center received a \$20,900 donation from the Jim McNiff Memorial Golf Tournament in support of the Harriet Kluger Renal Research Fund. The sixth annual event brought together friends and family members to support the McNiff's in their continued efforts to raise funds for kidney cancer research.

Employee Profile: Tracy Mitchell

Tracy Mitchell, RN, is a nurse on the inpatient gynecologic oncology floor at Smilow. In this role, she also serves as a resource nurse, providing support and guidance to colleagues as needed, and rotates as a charge nurse, which requires her to oversee the day to day operations of the unit. She collaborates with the entire team to make sure the plan of care for patients is executed and that everything is running smoothly.



On average, patients spend 2-4 days in the unit and include breast and gyn/onc patients that have had surgery, and also overflow patients from medical oncology. Patients may also be receiving chemotherapy desensitization treatment or specialized radiation therapy, such as Iodine 131 or internal radiation therapy (brachytherapy), which require patients to be

#PancreaticCancer at
@SaintFrancisCT
symposium



"Data shows that multidisciplinary #tumorboard discussions prolong patients' lives"
Dr. Strazzabosco presenting .
@SaintFrancisCT
#cancercare



"Pink Week" raising money for #Smilow Cancer Hospital
... via @WTNH

Closer to Free

closer to free
The fund to advance cancer research and enhance patient care

CALENDAR OF EVENTS

June 16; 7AM
New Haven Lawn Club
Yale ASCO Review 2017

Highlights of the Annual Meeting

Charles S. Fuchs, MD, MPH

[Read More >>](#)

June 16; 7:30AM
SHM L-221A

Urology Grand Rounds

Working Towards Precision Medicine in Bladder Cancer

Cheryl Lee, MD

admitted for up to two days. Tracy is there to make sure patients have what they need medically, and also assist with emotional support. She answers any questions and tries to ease her patients' fears.

"For a lot of our patients, this is their first step towards a diagnosis and treatment plan," said Tracy. "I don't think people realize just how much fear and worry there is, and how difficult it can be for both patients and the nurses trying to help them cope."

Cara Henderson, RN, BSN, CMSRN, Patient Service Manager at Smilow, commented, "Tracy Mitchell is one of our four resource nurses who acts as an extension of our leadership team. One of Tracy's greatest qualities is her attention to detail in assessing a patient's status. She is one of the most experienced nurses on the unit with a wealth of knowledge to share with others. We are lucky to have her."

Funding Opportunities

Emerging Questions in Cancer Systems Biology (U01)

This FOA invites cooperative agreement applications for Research Projects that utilize systems biology approaches to address emerging questions in cancer initiation, progression, and treatment.

Application Deadline: June 23, 2017

[Learn More >>](#)

NCCN/Pfizer Request for Proposals: Clinical Pathways in Breast Cancer

NCCN is pleased to announce it is collaborating with Pfizer's Independent Grants for Learning & Change (IGLC) team to offer a new grant opportunity seeking proposals that use clinical pathways to address a quality improvement initiative along the continuum of care for breast cancer patients.

Letter of Intent Due: June 26, 2017

[Learn More >>](#)

SU2C/Genetech Catalyst Research Grant

Stand Up To Cancer announces a second Catalyst™ collaboration with Genetech.

Proposals Due: June 27, 2017

[Learn More >>](#)

Department of Defense Lung Cancer Research Program Funding Opportunities for 2017

[Read More >>](#)

June 16; 11AM

YNHH Atrium

Smilow Screening & Prevention Program Informational Table

National Men's Health Week/Prostate Cancer Screening & Prevention

[Read More >>](#)

June 18; 7:30PM

WNPR 90.5

Yale Cancer Answers

Acupuncture for Cancer Patients

Olympia Dreszer, ND, LAc

[Read More >>](#)

June 19; 11AM

SHM I-304

YCC Radiobiology and Radiotherapy Research Program

A Cancer-Associated Variant of DNA Polymerase, K289M, has a Sequence-Context Specific Reaction Mechanism

Khadijeh Alnajjar, PhD

[Read More >>](#)

June 20; 9:30AM

TAC N-107

Pathology Research in Progress Talks

Mitochondrial DNA Stress Induces Interferon-related DNA Damage Resistance Signature

Zheng Wu

Role of D-DT in Renal Proximal Tubular Cell Proliferation and Survival After Ischemia-Reperfusion Injury

Akinobu Ochi MD, PhD

[Read More >>](#)

June 20; 12PM

Park Street Auditorium

Concept Award

Letter of Intent due: July 27

Career Development Award

Letter of Intent due: September 13

Idea Development Award

Preproposal due June 28

Investigator-Initiated Translational Research Award

Preproposal due: June 28

Translational Research Partnership Award

Preproposal due: June 28

[Learn More >>](#)

DoD Peer Reviewed Cancer Research Program Awards

To address the cancer health needs of both deployed and non-deployed personnel, their dependents, retirees, and Veterans.

Idea Award with Special Focus

Preapplication due: June 30, 2017

Translational Team Science Award

Preapplication due: June 30, 2017

[Learn More >>](#)

Lung Cancer Research Foundation Grant

The Lung Cancer Research Foundation has announced its funding opportunities for research projects in basic, translational, and clinical research, supportive care, and quality of care/outcomes.

Application Deadline: July 1, 2017

[Learn More >>](#)

Cooperative Agreement to Develop Targeted Agents for Use with Systemic Agents Plus Radiotherapy (U01)

This FOA invites cooperative agreement (U01) applications that propose studies to enhance pre-clinical in vitro and in vivo testing of NCI-prioritized molecularly targeted anti-cancer agents for use

YCC Grand Rounds

Biology and Treatment of Neuroendocrine Tumors

Matthew Kulke, MD

[Read More >>](#)

June 21; 8AM

Yale's West Campus

2017 YCC Lung Cancer SPORE Workshop

Engineering the Cancer Genome

Tyler Jacks, PhD

[Read More >>](#)

June 21; 3:30PM

300 George St., room 503

YSPH Biostatistics Seminar

Genomic and Pathological Image Markers for Lung Cancer Outcome Prediction

Yang Xie, MD, PhD

[Read More >>](#)

June 22; 8AM

Yale's West Campus

2017 YCC Lung Cancer SPORE Workshop

[Read More >>](#)

June 23; 12PM

Hope 103

YCC Seminar

Small RNAs as Molecular Probes and Therapeutic Guides for Cancer Metastasis

Sohail Tavazoie, MD, PhD

[Read More >>](#)

June 22; 2PM

Online Seminar

YCC/Oncology Central Online Symposium

Practical Clinical Aspects of Immuno-Oncology

Roy S. Herbst, MD, PhD

[Read More >>](#)

with radiation therapy combined with systemic chemotherapy.

Application Deadline: July 14, 2017

[Learn More >>](#)

Department of Defense Breast Cancer Research Program Funding Opportunities for 2017

- **Breakthrough Award- Deadlines for Full Applications: Level 1 & 2 due June 15**
- **Level 3 & 4 due August 31**
- **Breakthrough Fellowship Award**
- **Deadline for Application: June 15, 2017**
- **Era of Hope Scholar Award**
- **Deadline for Application: June 15, 2017**
- **Innovator Award**
- **Deadline for Application: August 31, 2017**
- **Distinguished Investigator Award**
- **Deadline for Application: August 31, 2017**

[Learn More>>](#)

Department of Defense Prostate Cancer Research Program Funding Opportunities for 2017

- **Clinical Consortium Award LOI due August 24, 2017**
- **Impact Award - LOI due July 7, 2017**
- **Health Disparity Research Award - LOI due July 7, 2017**
- **Idea Development Award - LOI due July 14, 2017**
- **Physician Research Award - LOI due July 27, 2017**
- **Early Investigator Research Award - LOI due July 27, 2017**
- **Prostate Cancer Pathology Resource Network Award - LOI due August 24, 2017**

[Learn More >>](#)

Alex's Lemonade Stand Foundation Nurse Researcher Grants

ALSF's Nurse Researcher Grants program is dedicated to improving the quality of life for young cancer patients and their families by supporting studies to discover better ways to care for children undergoing treatment. This year, ALSF is offering two grants:

Discovery Grant

Application deadline: August 21, 2017

Nurse Researcher Fellowship

Application deadline: September 25, 2017

June 22; 2:30PM

SRC, Suites 107-109

Smilow Cancer Genetics and Prevention Program Seminar

[Read More >>](#)

June 22; 5:30PM

Park Street Auditorium

Smilow Wellness Workshop

A Look at Acupuncture and Acupressure

Olympia Dreszer, ND, LAc

[Read More >>](#)

June 23; 7:30AM

SMH L-221A

Urology Grand Rounds

Targeted Therapeutic Strategies and Metastatic Renal Cell Carcinoma

Miyad Movassaghi

[Read More >>](#)

June 25; 7:30PM

WNPR 90.5

Yale Cancer Answers

Men's Health Awareness: Prostate Cancer Screening

James Yu, MD, MHS

[Read More >>](#)

June 29; 2:30PM

SRC, Suites 107-109

Smilow Cancer Genetics and Prevention Program Seminar

[Read More >>](#)

June 29; 4PM

Smilow first floor conference room, 1-330

Breast Clinical Lecture Series

Male Breast Cancer

Julian Berrocal, MD

[Read More >>](#)

[Learn More >>](#)

Publications

Subsidies for Oral Chemotherapy and Use of Immunomodulatory Drugs Among Medicare Beneficiaries With Myeloma.

Olszewski AJ, Dusetzina SB, Eaton CB, Davidoff AJ, Trivedi AN.
J Clin Oncol. 2017 May 25;JCO2017722447.

[Read More >>](#)

Membrane-bound Dickkopf-1 in Foxp3+ regulatory T cells suppresses T cell-mediated autoimmune colitis.

Chae WJ, Park JH, Henegariu O, Yilmaz S, Hao L, Bothwell ALM.

Immunology. 2017 May 30.

[Read More >>](#)

Bone Density Screening in Postmenopausal Women With Early-Stage Breast Cancer Treated With Aromatase Inhibitors.

Stratton J, Hu X, Soulos PR, Davidoff AJ, Puzstai L, Gross CP, Mougalian SS.

J Oncol Pract. 2017 May;13(5):e505-e515.

[Read More >>](#)

Macrolides selectively inhibit mutant KCNJ5 potassium channels that cause aldosterone-producing adenoma.

Scholl UI, Abriola L, Zhang C, Reimer EN, Plummer M, Kazmierczak BI, Zhang J, Hoyer D, Merkel JS, Wang W, Lifton RP.

J Clin Invest. 2017 Jun 12.

[Read More >>](#)

The management of sexuality, intimacy, and menopause symptoms (SIMS) after prophylactic bilateral salpingo-oophorectomy: How to maintain sexual health in "previvors".

Alexandre M, Black J, Whicker M, Minkin MJ, Ratner E.


Maturitas. 2017 Jun 3.

[Read More >>](#)

Submissions

Please submit your recent publication and grant announcements to:

Renee Gaudette
Director, Public Affairs and Marketing
renee.gaudette@yale.edu

 Forward to a Friend

Stereotactic body radiotherapy for de novo spinal metastases: systematic review.

Husain ZA, Sahgal A, De Salles A, Funaro M, Glover J, Hayashi M, Hiraoka M, Levivier M, Ma L, Martínez-Alvarez R, Paddick JI, Régis J, Slotman BJ, Ryu S.

J Neurosurg Spine. 2017 Jun 9:1-8.

[Read More >>](#)

Compliance with indoor tanning bans for minors among businesses in the USA.

Choy CC, Cartmel B, Clare RA, Ferrucci LM.

Transl Behav Med. 2017 Jun 7.

[Read More >>](#)

Are Small Breast Cancers Good because They Are Small or Small because They Are Good?

Lannin DR, Wang S.

N Engl J Med. 2017 Jun 8;376(23):2286-91.

[Read More >>](#)

Radiation-Specific Clinical Data Should Be Included in Existing Large-Scale Genomic Datasets.

Chen WS, Townsend JP, Yu JB.

Int J Radiat Oncol Biol Phys. 2017 May 1;98(1):8-10.

[Read More >>](#)

Development of a Transcriptomic Signature Associated With Lung Adenocarcinoma Recurrence and Survival.

Brooks ED, Micevic G, Chang JY.

Int J Radiat Oncol Biol Phys. 2017 May 1;98(1):251.

[Read More >>](#)

An Exportin-1-dependent microRNA biogenesis pathway during human cell quiescence.

Martinez I, Hayes KE, Barr JA, Harold AD, Xie M, Bukhari SIA, Vasudevan S, Steitz JA, DiMaio D.

Proc Natl Acad Sci U S A. 2017 Jun 5.

[Read More >>](#)

Indications for invasive mediastinal staging in patients with early non-small cell lung cancer staged with PET-CT.

Gao SJ, Kim AW, Puchalski JT, Bramley K, Detterbeck FC, Boffa DJ, Decker RH.

Lung Cancer. 2017 Jul;109:36-41.

[Read More >>](#)

Local DNA repair inhibition for sustained radiosensitization in high grade gliomas.

King AR, Corso CD, Chen EM, Song E, Bongiorni P, Chen Z, Sundaram RK, Bindra RS, Saltzman WM.

Mol Cancer Ther. 2017 May 31.

[Read More >>](#)