

DirectConnect

Inside Yale Cancer Center

March 18, 2016

Announcements

Medical Oncology Retreat



Last week the faculty of our section of medical oncology and our care centers joined together for a two-day retreat at Water's Edge in Westbrook, CT. The break from clinical, research, and teaching responsibilities gave the group the opportunity to network, learn more about each of the practices, brainstorm ideas, and regroup. Hosted by Drs. Roy Herbst and Michal Rose, the two-day program was planned by a committee of faculty members and included stress-reduction, medical error discussions, and leadership seminars. In addition, each of the Smilow Cancer Care Centers presented on their locations, as well as the VA Cancer Center and Smilow Cancer Hospital at Saint Francis.

[Learn More >>](#)

Join Yale University's Relay for Life

from the desk of

Peter G. Schulam, MD, PhD

Director, Yale Cancer Center
and Physician-in-Chief,
Smilow Cancer Hospital (Interim)

Yale CANCER
CENTER
A Comprehensive Cancer Center Designated
by the National Cancer Institute

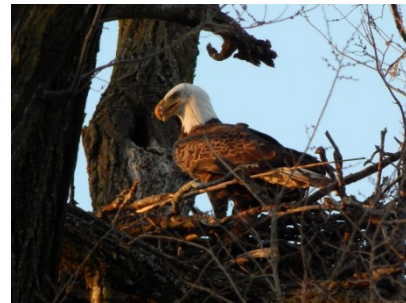
SMILOW CANCER HOSPITAL
AT YALE-NEW HAVEN

Recent News

Read recent articles featuring experts from Yale Cancer Center

[News Center >>](#)

LATEST ARTICLES:



Nearby Bald Eagles Remind us that Recovery is Possible

[Read More >>](#)



Yale University students join together for an annual Relay for Life event each spring in the Payne Whitney Gym to support cancer survivors and raise awareness and funding for the American Cancer Society. The American Cancer Society funds many of our research efforts through grants and other initiatives. Please consider sharing your support of both the Yale students and the American Cancer Society by supporting the Relay for Life on Friday, April 15.

[Learn More >>](#)

Notables

The Connecticut Academy of Science and Engineering announced the election of 23 of Connecticut's leading experts in science, engineering and technology to membership in the Academy. Congratulations to Yale Cancer Center's **Murat Gunel**, **Akiko Iwasaki**, and **Anna Marie Pyle** who have been inducted in the 2016 membership of the Academy.

[Learn More >>](#)

Susan J. Baserga, a member of Yale Cancer Center's Genomics, Genetics, and Epigenetics Research Program, is the winner of this year's **American Society for Biochemistry and Molecular Biology William C. Rose Award** for her valuable contributions to the field of ribosome biogenesis research and her dedication as a teacher and a mentor. The Rose award is given to scientists who have made outstanding contributions to biochemical and molecular biology research and have a proven commitment to the education of younger scientists.



Study finds racial differences in smoking patterns, screening

[Read More >>](#)



Fucito: Smokers should be encouraged to quit at lung cancer screenings

[Read More >>](#)

Join Yale Cancer Center on Facebook

[Like us on Facebook](#) 

LATEST POSTS:

Lauren Telesz, an 18-year-old Smilow Cancer Hospital patient whose Hodgkin's Lymphoma is now in remission, had a unique request for the Make-A-Wish Foundation. Unlike requests from children with serious illnesses to visit Disney World or to meet a celebrity, Lauren wished to become a published author. Lauren's book, "The Excursion," is a children's storybook designed to help improve vocabulary skills.

Research in the News

Study finds racial differences in smoking patterns, screening

New research from the Yale School of Public Health reveals that differences in smoking habits between African Americans and whites may lead to a disparity in screening for lung cancer.

For the study, Theodore Holford, the Susan Dwight Bliss Professor of Public Health (biostatistics), and colleagues used data from the National Health Interview Surveys, conducted from 1965 to 2012, to pinpoint differences in tobacco-smoking habits between African Americans and white smokers. The researchers analyzed the changes in smoking behavior that occurred after the publication of the landmark U.S. Surgeon General's Report on Smoking and Health in 1964, which was the first federal report to link smoking with adverse health effects and spurred a nationwide effort to curb tobacco use.

[Read More >>](#)

Yale team screens cardiac drugs that also attack cancer

Several drugs now being used to treat heart failure and atrial arrhythmia also show promise as DNA disruptors in cancer cells and could be readily repurposed as anticancer agents, according to a new study by Yale researchers.

Now researchers at Yale have also discovered that cardiac glycosides block the repair of DNA in tumor cells. Because tumor cells are rapidly dividing, their DNA is more susceptible to damage, and inhibition of DNA repair is a promising strategy to selectively kill these cells. Several other researchers have noted that cardiac glycosides possess anticancer properties, but the basis for these effects was not well known. The Yale scientists showed that cardiac glycosides inhibit two key pathways that are involved in the repair of DNA.

[Read More >>](#)

Key protein in pancreatic cancer growth may also be its undoing

Yale researchers have found that the overexpression of a protein called renalase in pancreatic cancer plays a critical role in spurring the cancer's growth while also



After fighting cancer, Lauren wished to become a published author

[Read More >>](#)

Several drugs currently used to treat heart failure show promise as cancer therapies, according to a new study from Yale Cancer Center's Dr. Ranjit Bindra and Dr. Seth Herzon. Researchers have discovered that cardiac glycosides, which increase cardiac output, block the repair of DNA in tumor cells. The inhibition of DNA repair is a promising strategy to selectively kill cancer cells.



Yale team discovers cardiac drugs that also **attack cancer**

[Read More >>](#)

At last month's Quality Care Symposium in Phoenix, Dr. Kerin Adelson spoke with The ASCO Post about improving end-of-life planning and reducing futile care. Having studied information from the Medicare Database, Dr. Adelson discussed the need to increase communication with patients, reduce visits to the emergency room, and improve patient comfort.

providing a possible new target for attacking the tumors it helps develop.

This is why the study's lead author, Gary Desir, M.D., professor of Medicine, is so encouraged by the findings. Desir is no stranger to renalase, having discovered and named it in 2005 in his Yale lab.

"We discovered renalase while searching for a mechanism that could explain the very high incidence of heart disease in patients with failure," Desir said. "We named this previously unknown protein that circulated in plasma at very high levels renalase. We chose that name because the kidney (renal) makes a lot of it, and it functions as an enzyme (ase) to metabolize adrenaline."

[Read More >>](#)

Employee Profile: Winsome Smith, RN

Winsome Smith, RN has been a nurse for 40 years and has been with the Yale-New Haven Hospital Apheresis/Transfusion Service since the 1980's. In that time she has had the opportunity to witness many advances and the growth of the clinic, including the move towards peripheral blood stem cells from bone marrow and the introduction of biotherapies.



In the clinic, Winsome cares for both inpatients and outpatients across the age spectrum. She performs apheresis treatments, where blood is removed from the body and separated into various components for patients with hematological malignancies and other cancers. She also administers chemotherapy to non-oncologic patients. Even though they are a small staff, the clinic is able to provide 24/7 support to the hospital for any acutely ill patients, both adult and pediatric. If a patient is too ill to come to the clinic, they will provide care at the bedside.

"My main goal is to get the patients whatever they need in order to provide them the best care possible. This



[Read More >>](#)

Congratulations Dr. Samuel Katz, recipient of the Alliance for Cancer Gene Therapy's Young Investigator Grant! This grant will support Dr. Katz's immunotherapy research. He is investigating the use of RNA to reprogram a patient's T-cells, also known as killer white cells, so that they might target and destroy blood cancer cells.



[Read More >>](#)

My younger brother was diagnosed with multiple myeloma over a year ago. As my brother went through his treatments, I could see the despair in his eyes.... One day I had enough of my brother's moping around

"This is why we train," I said. "To prepare for the road ahead."

"This is why we train," I told him. "For the mental stamina."

"This is why we train," I said. "To prepare you for the unexpected things"...

requires flexibility and also a lot of collaboration with outpatient and inpatient physicians, community providers, support services and more," said Winsome. "As the lead nurse on the unit, I help with strategic planning to make sure that patients are receiving the best possible care and the clinic is running efficiently."

Kathryn Pratt, RN, Autologous Stem Cell Transplant Coordinator, commented, "Winsome is keenly aware of everything that happens on her unit and is always available to address any issues. She has a vast breadth of knowledge and takes the time to provide a comprehensive and understandable explanation of the extremely complex procedures that go on in the apheresis unit. Kind and caring, she is able to forge connections with even the most anxious patients in a very short amount of time. Winsome is the epitome of excellent nursing care."

Funding and Award Opportunities

All current funding opportunities are archived on the Yale Cancer Center website, and searchable by topic, funding agency, and due date. Please check the site often for new opportunities. [Learn More >>](#)

Schwartz Center Compassionate Caregiver of the Year Award

Each year the Schwartz Center for Compassionate Healthcare honors extraordinary health care professionals with the National Compassionate Caregiver of the Year (NCCY) Award. The award recognizes caregivers from across the country who exemplify characteristics of compassionate care, including: communicating sensitively with patients and loved ones; listening carefully, showing empathy and instilling hope; respecting patients' values, culture, choices and decisions; and understanding the significance of patients' families and communities.

An individual health care professional or team that works directly with patients in any U.S. health care setting is eligible for this prestigious national award.

Application Deadline: March 31, 2016

[Learn More >>](#)





[Read More >>](#)


Follow Yale Cancer Center on Twitter


Follow us on 


LATEST TWEETS:

 Paper by Lisa Fucito et al: pairing lung ca. screening w/ tobacco cessation help would maximize screening benefits

 We invite you to listen to Yale Cancer Center Answers, our weekly radio show/podcast on @wnpr. Great conversations

 Congratulations to Dr. Lynne Regan, an honoree in the 2016 Women of Innovation program by the Connecticut Technology Council @CTTech

 Racial disparities in lung cancer screening <http://www.ctpost.com/local/article/Racial-disparities-in-lung-cancer-screening-6890895.php?cmpid=twitter-desktop...> via @connpost

 Congratulations Dr. Samuel Katz on your Alliance for Cancer Gene Therapy's Young Investigator Grant

Closer to Free

Human Frontier Science Program

The Human Frontier Science Program (HFSP) is a niche program that supports innovative basic research into fundamental biological problems with emphasis placed on novel and interdisciplinary approaches that involve scientific exchanges across national and disciplinary boundaries. The participation of scientists from disciplines outside the traditional life sciences such as biophysics, chemistry, computational biology, computer science, engineering, mathematics,

nanoscience or physics has made biological research increasingly quantitative and will continue to do so. Such collaborations have opened up new approaches for understanding the complex structures and regulatory networks that characterize living organisms, their evolution and interactions.

To stimulate novel, daring ideas and innovative approaches, preliminary results are not required in research grant applications. The HFSP places special emphasis on encouraging scientists early in their careers - this is expressed both in the establishment of a special Young Investigators' Grant and in encouraging scientists early in their careers to participate in the Program Grants.

Application Deadline: March 31, 2016

[Learn More >>](#)

2016 AACR Outstanding Investigator Award for Breast Cancer Research

The 2016 Award is funded by Susan G. Komen®. The recipient of this award will receive a \$10,000 honorarium and present a 25-minute lecture at the annual San Antonio Breast Cancer Symposium, San Antonio, TX.

Application Deadline: April 13, 2016

[Learn More >>](#)

Department of Defense Breast Cancer Research Program Grants

Breakthrough Award

Investigators at all academic levels (or equivalent) Senior postdoctoral fellows who do not meet the eligibility requirements of the Breakthrough Fellowship Award are encouraged to apply under Funding Levels 1 and 2 Supports promising research that has the potential to lead to or make breakthroughs in breast cancer Potential impact of the research may be near-term or long-term, but it must be significant and go beyond an incremental advancement.

closer to free

The fund to advance cancer research and enhance patient care

March 18; 8AM

YSM Dean's Office / Laboratory Medicine Seminar

Yale's West Campus

Conference Center

Cellular Immunotherapy Summit at Yale

[Read More >>](#)

March 18; 12PM

YCC Research in Progress Seminar

Park Street Auditorium

Targeting Homologous Recombination Deficiency in

Prostate Cancer

Tony Kim, MD

[Read More >>](#)

March 18; 1PM

YCC Developmental Therapeutics Research Program

SHM I-116

Macrophage Migration Inhibitory Factor in Leukemia and Lymphoma

Elias Lolis, PhD

[Read More >>](#)

March 18; 2:30PM

YSM Special Seminar

SHM B-145

Study of Relevant Mechanisms of Immunosuppression in Glioblastomas

Miguel Idoate, MD, PhD

[Read More >>](#)

March 19; 6PM

Yale Cancer Center Hosts: The Jim McNiff Memorial Golf Tournament Fundraiser

The Winemaker's Boutique

Wine Tasting Fundraiser

Breakthrough Fellowship Award (NEW!)

Successfully completed the requirements for a doctoral or medical degree, and been in the laboratory or clinical research setting in which the proposed research is to be performed for no more than 2 years, and A total of less than 4 years experience in a postdoctoral fellowship or mentored clinical research training program (excludes any clinical residency or fellowship training).

Era of Hope Scholar Award

Independent, non-mentored investigators within 6 years of their last training position (e.g., postdoctoral fellowship, medical residency, clinical fellowship) as of the application submission deadline Supports exceptionally talented, creative early-career scientists who have demonstrated that they are the "best and brightest" in their fields.

Innovator Award

Associate Professor or above (or equivalent). Supports visionary individuals who have demonstrated creativity, innovative work, and leadership in any field. Provides opportunity to pursue novel, visionary, high-risk ideas that will accelerate progress toward ending breast cancer. Please must include breast cancer advocates on their research team.

Letter of Intent Deadline: April 21, 2016

[Learn More >>](#)

Prostate Cancer Foundation Challenge Awards

Challenge awards are awarded to investigations of metastatic, lethal prostate cancer. These awards will be funded depending on the level of innovation in applications received. High risk, currently unfunded projects are most desired.

Application Deadline: April 29, 2016

[Learn More >>](#)

Prostate Cancer Foundation Young Investigator Award

PCF Young Investigator Awards will be three (3) years in duration and will provide \$75,000 per year. The award funds may be used flexibly to advance the career and research efforts of the awardee. Every PCF Young Investigator is required to be under the direct supervision of a mentor. Applicants should be within six-years following completion of a professional degree or clinical training such as MD, PhD, MD-PhD, DSc, ScD, DDM,

[Read More >>](#)

March 20; 6PM

Yale Cancer Center Answers

WNPR

Head and Neck Pathology

Manju Prasad, MD, MBBCh

[Read More >>](#)

March 21; 11AM

YCC Radiobiology and Radiotherapy Research Program Seminar

SHM I-304

A Single-Cell Assay Reveals Distinct Roles for Rev7/MAD2L2 and Crb2/53BP1 in Regulating Resection

Bryan Leland

[Read More >>](#)

March 21; 2:30PM

Yale Cancer Biology Institute Research Seminar

Hope 110

Immunosuppression and the Anti-Tumor T Cell Response in Natural Tumor Microenvironments

Nikhil Joshi, PhD

[Read More >>](#)

March 22; 9:30AM

Pathology Research in Progress Talks

TAC N-107

TBA

Linette Bosques and Nathan Fons

[Read More >>](#)

March 22; 12PM

Smilow Case Notes

Park Street Auditorium

Listening to the Silent Masses

Navid Hafez, MD

Mortality Review

Tara Sanft, MD and Alfred Lee, MD, PhD

[Read More >>](#)

March 22; 3PM

YCC Special Seminar

DDS, DMD, MBBS or equivalent and hold the title of Postdoctoral Fellow, Instructor, Research Associate, Assistant Professor, or equivalent.

Application Deadline: April 29, 2016

[Learn More >>](#)

Taub Foundation Grants

The Taub Foundation Grants Program for Myelodysplastic Syndromes (MDS) Research was created to support high-impact, innovative translational research to understand the underlying causes of MDS and to advance its treatment and prevention. The Program specifically focuses on MDS research, exclusive of AML and MPN. The Program supports translational research that includes bidirectional efforts, building upon research in the laboratory and therapeutic outcomes in the clinic. Studies focusing on molecular genetics, epigenetics, splicing factors, stem cells, the microenvironment and novel therapeutic targets relevant to MDS are encouraged. The Taub Program supports independent investigators at all stages of their careers. Awards are not restricted to investigators currently working in MDS. Applications from investigators in other fields and collaborative efforts are encouraged. Proposals focused on the progression of MDS to AML are not within the scope of this funding.

Application Deadline: May 13, 2016

[Learn More >>](#)

2016 AACR Distinguished Lecture on the Science of Cancer Health Disparities

Funded by Susan G. Komen®, the recipient of this award will receive a \$5,000 honorarium and present a 45 minute lecture at the Ninth AACR International Conference on The Science of Cancer Health Disparities in Racial/Ethnic Minorities and the Medically Underserved.

Application Deadline: May 18, 2016

[Learn More >>](#)

Damon Runyon Innovation Award

The Damon Runyon-Rachleff Innovation Award is designed to provide support for the next generation of exceptionally creative thinkers with "high-risk/high-reward" ideas that have the potential to significantly impact our understanding of and/or approaches to the prevention, diagnosis or treatment of cancer.

The Innovation Award is specifically designed to provide funding to extraordinary early career researchers who

Fitkin Amphitheatre, LMP 1094

Disease Relapse Following Allogeneic Stem Cell Transplantation

Robert J. Soiffer, MD

[Read More >>](#)

March 23; 12PM

YSPH Dissertation Presentation

LEPH, Room 216

Dietary Biomarker Discovery using Metabolomics & Application to Understanding Breast Cancer Etiology

Mary Playdon

[Read More >>](#)

March 24; 9AM

Therapeutic Radiology Grand Rounds

NP4 101-A

Improving Survival in Cervical Cancer

Akila Viswanathan, MD, MPH

[Read More >>](#)

March 24; 12:30PM

Pathology Grand Rounds

Fitkin Amphitheater, LMP 1094

Vascular Dependent and Independent Factors Modulating Cerebral Infarct Volume

Douglas A. Marchuk, PhD

[Read More >>](#)

March 24; 6:30PM

University of Connecticut School of Medicine CME Symposium

Cell & Genome Building, Grossman Auditorium

Surgery For Sarcomas

Lee Jeys, MB ChB, MSc

[Read More >>](#)

March 27; 6PM

Yale Cancer Center Answers

WNPR 90.5

Colorectal Cancer Awareness Month

Howard Hochster, MD

[Read More >>](#)

March 29; 9:30AM

have an innovative new idea but lack sufficient preliminary data to obtain traditional funding. It is not designed to fund incremental advances. The research supported by the award must be novel, exceptionally creative and, if successful, have the strong potential for high impact in the cancer field.

Application Deadline: July 1, 2016

[Learn More >>](#)

Recent Publications

Pedicle versus free flap reconstruction in patients receiving intraoperative brachytherapy.

Geiger EJ, Basques BA, Chang CC, Son Y, Sasaki CT, McGregor A, Ariyan S, Narayan D.

J Plast Surg Hand Surg. 2016 Mar 16:1-6.

[Read More >>](#)

Comparison of Smoking History Patterns Among African American and White Cohorts in the United States Born 1890 to 1990.

Holford TR, Levy DT, Meza R.

Nicotine Tob Res. 2016 Apr;18 Suppl 1:S16-29.

[Read More >>](#)

Mutation based treatment recommendations from next generation sequencing data: a comparison of web tools.

Patel JM, Knopf J, Reiner E, Bossuyt V, Epstein L, DiGiovanna M, Chung G, Silber A, Sanft T, Hofstatter E, Mougalian S, Abu-Khalaf M, Platt J, Shi W, Gershkovich P, Hatzis C, Pusztai L.

Oncotarget. 2016 Mar 9.

[Read More >>](#)

The light and the dark sides of Interleukin-10 in immune-mediated diseases and cancer.

Geginat J, Larghi P, Paroni M, Nizzoli G, Penatti A, Pagani M, Gagliani N, Meroni P, Abrignani S, Flavell RA.

Cytokine Growth Factor Rev. 2016 Mar 8.

[Read More >>](#)

Pathology Research in Progress

TAC N-107

TBA

Alexandra Signoriello and Shang-Min Zhang, PhD

[Read More >>](#)

March 29; 12PM

Yale Cancer Center Grand Rounds

Park Street Auditorium

Evolutionary analysis reveals early and multiple origins of metastatic lineages within primary tumors

Jeffrey Townsend, PhD

TBA

Shrikant Mane, PhD

[Read More >>](#)

March 29; 5PM

YCC Breast Clinical Lecture Series

Smilow first floor conference room, 1-330

TBA

[Read More >>](#)

March 30; 3PM

YCC Special Seminar

Brady Auditorium, B-131

Leveraging Large Epidemiologic Cohorts to Define Colorectal Cancer Prevention, Treatment, and Biology

Charles S. Fuchs, MD

[Read More >>](#)

March 31; 12:30PM

Pathology Grand Rounds

Fitkin Amphitheatre, LMP 1094

Thyroid FNA: Can New Technologies Help Meet our Aspirations?

Ellen J. Giampolli, MD

[Read More >>](#)

April 1; 8AM

2016 YCC Developmental Therapeutics Half-Day Retreat

300 George Street Auditorium

Undruggable Targets

[Read More >>](#)

Integrating multidimensional omics data for cancer outcome.

Zhu R, Zhao Q, Zhao H, Ma S.
Biostatistics. 2016 Mar 14.

[Read More >>](#)

Intensive Combination Chemotherapy and X-Irradiation in Hodgkin's Disease.

DeVita VT Jr, DeVita-Raeburn E, Moxley JH 3rd.
Cancer Res. 2016 Mar 15;76(6):1303-4.

[Read More >>](#)

Directed migration of cancer cells by the graded texture of the underlying matrix.

Park J, Kim DH, Kim HN, Wang CJ, Kwak MK, Hur E, Suh KY, An SS, Levchenko A.
Nat Mater. 2016 Mar 14.

[Read More >>](#)

Localized JNK signaling regulates organ size during development.

Willsey HR, Zheng X, Carlos Pastor-Pareja J, Willsey AJ, Beachy PA, Xu T.
Elife. 2016 Mar 14;5.

[Read More >>](#)

Neuroendocrine tumor biomarkers: From monoanalytes to transcripts and algorithms.

Modlin IM, Bodei L, Kidd M.
Best Pract Res Clin Endocrinol Metab. 2016 Jan;30(1):59-77.

[Read More >>](#)

Pairing smoking-cessation services with lung cancer screening: A clinical guideline from the Association for the Treatment of Tobacco Use and Dependence and the Society for Research on Nicotine and Tobacco.

Fucito LM, Czabafy S, Hendricks PS, Kotsen C, Richardson D, Toll BA; Association for the Treatment of Tobacco Use and Dependence (ATTUD)/Society for Research on Nicotine and Tobacco (SRNT) Synergy Committee.

Cancer. 2016 Feb 24.

[Read More >>](#)

April 1; 12PM

YCC Research in Progress Seminar

NP4-101 B

TBA

Lucia Jilaveanu, MD, PhD

[Read More >>](#)

Submissions

Please submit your recent publication and grant announcements to:

Renee Gaudette

Director, Public Affairs and Marketing
renee.gaudette@yale.edu



Patient preferences regarding incidental genomic findings discovered during tumor profiling.

Yushak ML, Han G, Bouberhan S, Epstein L, DiGiovanna MP, Mougalian SS, Sanft TB, Abu-Khalaf MM, Chung GG, Stein SM, Goldberg SB, Puztai L, Hofstatter EW.

Cancer. 2016 Mar 11.

[Read More >>](#)

Disease-related costs of care and survival among Medicare-enrolled patients with myelodysplastic syndromes.

Zeidan AM, Wang R, Davidoff AJ, Ma S, Zhao Y, Gore SD, Gross CP, Ma X.

Cancer. 2016 Mar 11.

[Read More >>](#)