

March 03, 2017

## Announcements

### Oncology Care Model Improving Coordination

Smilow Cancer Hospital and Yale Cancer Center launched the Oncology Care Model (OCM) in July, and we are already seeing the positive effect of increased care coordination and decreases in non-beneficial healthcare utilization by our patients in the program. An estimated 3,300 patients are part of the program across all of our Smilow sites, as determined by eligibility requirements provided by the Centers for Medicare & Medicaid Services (CMS). At Smilow, Dr. Kerin Adelson, Dr. Rogerio Lilenbaum, Cathy Lyons, and Nara Sinanis lead our 5-year OCM integration.

Under the program, CMS provides a \$160/month stipend per patient with the goal of supporting infrastructure that will improve the quality and coordination of patient care, reduce hospital admissions, enhance patient-centered communication, and ultimately reduce cost. Smilow Cancer Hospital has used this revenue to hire care managers for the 3,300 patients in the program, to launch an extended care center available for all patients cared for at Smilow, which is scheduled to open in April, and to implement clinical pathways for standardized treatment throughout our Smilow Network. 4 RN care managers are working to coordinate care for OCM patients and create detailed care plans for the patients in the program. Another 3-4 will be hired soon.

For more information on the program and how your qualified patients may access their care plans, please contact [Kerin Adelson](#).

### U.S. News Best Hospitals - VOTE NOW

Voting is now open on [Doximity](#) for the annual Best Hospitals survey in *U.S. News & World Report*. All registered clinicians can login and vote. I encourage each of you to take a few minutes to vote and support cancer

*from the desk of*  
**Charles S. Fuchs, MD, MPH**  
Director, Yale Cancer Center  
and Physician-in-Chief  
Smilow Cancer Hospital

Yale  
NewHaven  
Health

Smilow Cancer  
Hospital

Yale CANCER  
CENTER

A Comprehensive Cancer Center Designated  
by the National Cancer Institute



### Recent News

Read recent articles featuring experts from  
Yale Cancer Center

[News Center >>](#)

### LATEST ARTICLES:

services at Yale New Haven Hospital. Please take the time to do this, and to recognize the great team that you are a part of each day at Smilow Cancer Hospital and at our Care Centers.

### State of the Science: Prostate and GU Cancers

On Thursday, March 22 at 5pm, join the faculty of the Prostate and Genitourinary Cancers Program at Smilow Cancer Hospital for presentations and discussions on the latest research and treatment for prostate and bladder cancers. Hosted by OncLive, Smilow Cancer Hospital, and Yale Cancer Center, registration for the program is free!

[Learn More >>](#)

[Register >>](#)

### Pilot Grant Applications Due

Yale Cancer Center is pleased to announce our 2017 Internal Pilot & Collaborative Co-Pilot Grant competitions. These grants will support innovative basic, clinical, computational, prevention/control, and translational cancer research. The primary review criteria will be scientific excellence, innovation, cancer relevance, and the likelihood of the project evolving into federally funded cancer research. Members of Yale Cancer Center or faculty who have applied for membership are eligible to apply. Pilot grant applications are due on Thursday, March 9 and Co-Pilot applications are due on Monday, April 3.

[Learn More >>](#)

### Biostatistics Consultation Service

The Biostatistics Shared Resource (BSR) is happy to announce the initiation of a drop-in consultation service. Please bring your biostatistics and bioinformatics questions for discussion to our office hours. Our statisticians will be available for discussion and to answer questions on site, free to you. For complex questions that take more time, we will schedule a follow-up appointment. Please refer to our [webpage](#) for general guidelines on utilization of the BSR service.

Location: WWW 211B

Time (weekly, unless announced):

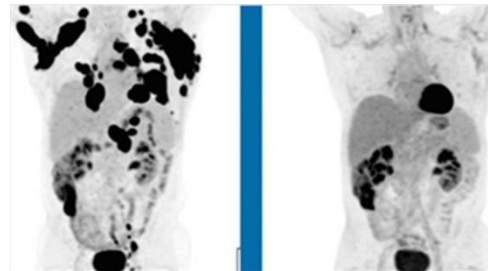
- for biostatistics, Thursday 9AM-5PM;  
Friday: 9AM-1PM

### Craig Crews is recipient of cancer research award



[Read More >>](#)

### Gene therapy to fight a blood cancer succeeds in major study



[Read More >>](#)

### In-house specialty pharmacy reduces medical errors, wait time



[Read More >>](#)

### When cancer treatments do more harm than good

- for bioinformatics, Friday: 1PM-5PM

## Notables

**Karla Neugebauer, PhD** has been selected for the **RNA Society's Mid-Career Award**. Dr. Neugebauer is a Professor of Molecular Biophysics and Biochemistry and a member of Yale Cancer Center's Genetics, Genomics, and Epigenetics Research Program. She was nominated for her innovative impact on the linkage between splicing and transcription, and the biogenesis of snRNPs.

**Katherine Hastings, PhD**, a post-doc in the lab of **Katerina Politi**, has received a 3-year **F32 Fellowship** from the NCI to support her research project, *Mechanisms of Response and Resistance to Immune Checkpoint Inhibitors in Lung Adenocarcinoma*. **Susan Kaech** is Katherine's co-sponsor for the fellowship.

**Peggy Beley**, director of bed management for Y Access at YNHH, and **Piper Brien, RN**, clinical supervisor for Y Access, recently presented **Eileen Dehm, RN** with a certificate of appreciation for her outstanding work managing patients when the hospital was recently at full capacity.



Our **Thoracic Oncology Program** presented at the International Association for the Study of Lung Cancer's **17th Annual Targeted Therapies for the Treatment of Lung Cancer** meeting last week in Santa



[Read More >>](#)

**MB&B Professor Susan Baserga** selected as a finalist for the **2017 Connecticut Technology Council Women of Innovation®** program



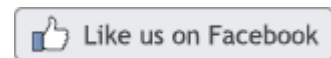
[Read More >>](#)

**Many US cancer patients struggle to afford life-saving medications**



[Read More >>](#)

**Join Smilow Cancer Hospital on Facebook**



**LATEST POSTS:**

We're officially kicked off and rockin' this 2017 #CTFRide season! Thanks to all who joined us at tonight's kick off party and

Monica. Co-chaired by Dr. Roy S. Herbst, the meeting included presentations from our team on checkpoint inhibitors, biomarkers, targeted therapies, and an opportunity for our fellows to present their projects.

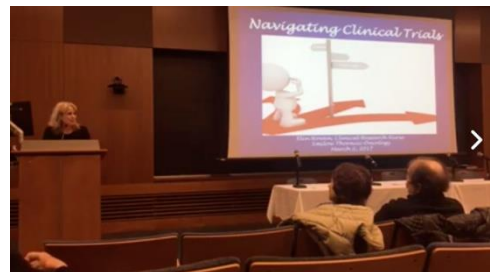


special thanks to Stony Creek Beer for hosting our awesome group!



[Read More >>](#)

Physicians and caregivers from Smilow Cancer Hospital present the latest information on lung cancer treatment and care at "The Promise of Personalized Medicine for Lung Cancer," a symposium for patients and families. #lscm #lungcancer



[Read More >>](#)

Members of our **Palliative Care and Hospice** team attended the **AAHPM/HPNA Annual Assembly** and presented work from Yale Cancer Center and Smilow Cancer Hospital last week. A summary of their presentations is below:



**Paper Presentation:**

Schulman-Green, D., Linsky, S., Adams, C., Jeon, S., Kapo, J., Blatt, L., Chagpar, A.

*Cancer stage makes a difference: Results from a pilot RCT integrating palliative care into breast cancer self-management.*

**Poster Presentations:**

Bapat AC, Ellman MS, Moyer KM, Morrison LJ.

*Palliative Care Teaching in the Yale Internal Medicine Curriculum: How Are We Doing?*

After putting cancer behind him, Ryan has a renewed sense of purpose—he is enjoying life with his family and takes every opportunity to pay forward the support his care team of Dr. Michael Lipcan, Dr. Charles Cha and others at Smilow Cancer Hospital provided him. In 2015, he signed up for the Closer to Free Ride with "Carl's Crusaders" and has since raised almost \$10,000 for the event. In fact, riding has become a family affair: Ryan rides the 100-mile as his wife and oldest son take part in the 10-mile leg. Read more about Ryan's experience as well as other survivors who have come together to share what it means to be closer to free.



Bapat AC, Kapo JM.  
*Palifermin in the Prevention of Chemotherapy-Induced Oral Mucositis.*

Adams, C., Linsky, S., Jeon, S., Schulman-Green, D.  
*Integration of palliative care into breast cancer self-management and its effect on health care utilization.*

Paul, A., Linsky, S., Schulman-Green, D.  
*What are the personal goals of women with breast cancer and what hinders goal achievement?*

Moyer KM, Morrison LJ, Encandela J, Bapat AC, Ellman MS.  
*Are internal medicine residents meeting the Bar? Comparing resident knowledge and self-efficacy to published palliative care competencies.*

Moyer KM, Morrison LJ, Addy TM, James R, Encandela J, Bapat AC, Ellman MS.  
*A new competency-based instrument to assess residents' self-efficacy and knowledge in palliative care.*

Schulman-Green, D., Smith, C.B., Lin, J., Feder, S., Bickell, N.A.  
*"You've got the curative one, the prolonging my life one, and the one where things aren't good": Oncologists' and patients' perceptions of initial, intermediate, and final goals of care conversations.*

Feder, S.L., Akgün K.M., Jeon, S., Schulman-Green, D., Womack, J., Tate, J.P., Redeker, N.S. (2017).  
*Associations with palliative care in HIV-infected and uninfected patients hospitalized with heart failure.*

Feder, S.L., Redeker, N.S., Jeon, S., Schulman-Green, D., Womack, J., Tate, J.P., Akgün KM. *Validation of the ICD-9 Diagnostic Code for Palliative Care in Inpatients with Heart Failure.*

#### **Concurrent Sessions:**

Gustin J, Landzaat LH, Barnett MD, Buckholz GT, Hwang JM, Levine SK, Morrison LJ, Okon T, Radwany SM, Yang H. Adding Your Voice:

*Vetting the Curricular Milestones for HPM Physicians in Training (TH360).*

Arnold RM, Buckholz GT, Carey EC, Klick JC, Morrison LJ, Rotella J, Liao S, Levine SK. *AAHPM Review of the USMLE Step Examinations (FR478).*

[Read More >>](#)

Doctors at Smilow were able to employ genomic analysis to extend a brain cancer patient's survival time by over three years. The median survival time for patients with glioblastoma multiform (GBM) is 15 months, but doctors at Smilow profiled the tumor genome three separate times, modifying treatment each time and keeping the cancer at bay for much longer than usual, giving one patient a five-year survival period.

"The molecular make-up of the cancer changed after each treatment and with time, but we were able to adjust treatments based on those profiles," said Dr. Murat Günel. "We will soon start to see real changes in patient outcomes."



[Read More >>](#)

This week's Cook for Your LIFE recipe is a great snack to keep on hand throughout the day. These spiced almonds are delicious, and are a great way to keep your calorie intake up if your appetite isn't as high as usual. A perfect treat to make for a friend or keep to yourself, just toss the nuts in the oil and spices, then spray a baking sheet with canola oil and bake at 350F for 15-20 minutes or until crunchy! Enjoy!



[Read More >>](#)

Smilow Cancer Hospital Complementary Services offers free guided meditation classes to patients, family, guests and staff. No experience necessary. To find the next

## Employee Profile: Jerry Rubino & Laura Snyder

Jerry Rubino, Clinical Secretary, and Laura Snyder, RN, BSN, CMSRN, Practice Nurse, keep the Melanoma Program at Smilow Cancer Hospital running smoothly for both patients and physicians. Jerry is often the first person new patients talk to over the phone and he is there in the clinic every day to act as point person for any issues that may arise. Laura works with patients to manage any side effects, as well as make them aware of their care plan moving forward and what to expect. Together, they act as the face of the Melanoma Team and take care of what needs to be done with compassion and understanding.



Patients know that they can rely on Jerry and Laura for almost anything. From scheduling appointments and scans, to dealing with insurance issues, Jerry and Laura work together to get the job done. "We treat patients as we would want our own family members to be treated," said Laura. "Many are receiving complex immunotherapy regimens, and we don't want them to worry about anything other than getting well."

One patient commented, "Jerry makes you feel like it is not only his job, but he truly cares for the person on the phone. His relentless responsiveness when the situation warrants immediate attention is exceptional." As patients are going through a difficult time, Jerry and Laura are there for them every step of the way, giving them peace of mind that someone is fighting for them, so they can continue their own fight.

Dr. Mario Sznol commented, "Often there are very sick patients in our practice that are receiving complex treatments. Recently Laura was able to help secure approval for a critical drug for one of my patients, going above and beyond to make sure it got done. Almost every patient I have has gone out of their way to say something nice about Jerry and to thank us for all the help he gives them. These two truly are an amazing team."

class, visit the events section on our website and search "meditation."










[Read More >>](#)

### Follow Yale Cancer Center on Twitter

Follow us on [twitter](#)

#### LATEST TWEETS:

-  Thank you Rosemary for sharing your courage, strength and inspiration with our guests at tonight's #lungcancer symposium #lscsm
-  "We can't impose what well means; we try to understand what each patient's goals for well means and help them achieve it." #tumorboard
-  "We learn from your #courage and your grace as you go through your #cancer journey," Emily Duffield, APRN - presenting 'Coping with Cancer'
-  New study finds targeted drug combos may have dramatic synergy in #breastcancer, even when single drugs are inactive
-  New publication from .@Yale\_Urology on the management strategy for active surveillance in #prostatecancer
-  Phase II #clinicaltrial for patients w/ metastatic #melanoma or NSCLC #lungcancer w/ brain metastases #options#lscsm
-  Phase I #clinicaltrial of targeting CPI-444 and in combo w/ Atezolizumab for

## Funding and Award Opportunities

All current funding opportunities are archived on the Yale Cancer Center website, and searchable by topic, funding agency, and due date. Please check the site often for new opportunities.

[Learn More >>](#)

### Canine Immunotherapy Trials and Correlative Studies (U01)

This FOA will support canine clinical studies using immunotherapeutic agents and novel drug combinations together with laboratory correlative studies that seek to understand the cellular and molecular mechanisms that determine the anti-tumor response (or non-response) in dogs with spontaneous tumors.

**Deadline for Application:** March 7, 2017

[Learn More >>](#)

### Coordinating Center for Canine Immunotherapy Trials and Correlative Studies (U24)

This FOA will support a coordinating center for a network of cooperative agreements that will conduct clinical trials in pet dogs with spontaneous tumors and perform laboratory correlative studies associated with the clinical trials.

**Deadline for Application:** March 7, 2017

[Learn More >>](#)

### Consortium for Pancreatic Ductal Adenocarcinoma (PDAC) Translational Studies on the Tumor Microenvironment (U01)

The purpose of this FOA is to stimulate research in the area of PDAC microenvironment with the ultimate goal of understanding the interaction between tumors and the microenvironment.

**Deadline for Application:** March 7, 2017

[Learn More >>](#)

### Resource Center for the Consortium for Pancreatic Ductal Adenocarcinoma (PDAC) Translational Studies (U24)

This FOA invites applications to establish a Resource Center for the Consortium for PDAC Translational Studies on the Tumor Microenvironment (Consortium) that has

pts with advanced #melanoma@YaleCancer

Our @YaleCancer team at one of their poster presentations at this weekend's @AAHPM#hpm17 meeting on #hospice and #PalliativeCare.

Join us at 7:30pm for @YaleCancer Answers on @wnpr for the latest information on #biomarker testing for #lungcancer#lcsm

Final presentation of the @ASCO@sitcancer #immunosym@DrRoyHerbstYale presenting on immune checkpoints.

Join @DrRoyHerbstYale now at #immunosym for a session on new drug combos with #immune checkpoints @sitcancer

"We need more evidence, not less." @cpgYALE@YaleMed

---

## Closer to Free

# closer to free

The fund to advance cancer research and enhance patient care

---

## Upcoming Events

**March 3; 12PM**

**YCC Research in Progress Seminar**

NP4-101B

TBA

Ranjit Bindra, MD, PhD

[Learn More >>](#)

**March 3; 7:30PM**

**Yale Medical Symphony Event**

Harkness Auditorium

Winter Pops Concert

[Learn More >>](#)

the ultimate goal to design new immunotherapy and combination interventions in PDAC.

**Deadline for Application:** March 7, 2017

[Learn More >>](#)

### **Stand Up To Cancer - LUNgevity - American Lung Association Lung Cancer Interception Dream Team**

This grant will provide up to \$7 million to solve key problems in lung cancer interception research.

**Letter of Intent Due:** March 8, 2017

[Learn More >>](#)

### **Yale Cancer Center 2017 Internal Pilot Grant Program**

YCC is pleased to announce the 2017 Internal Pilot Grant competition. Members of Yale Cancer Center or faculty who have applied for membership are eligible to apply.

**Deadline for Submission:** March 9, 2017 Grant application forms and guidelines may be obtained by [email](#)

[Learn More >>](#)

### **Cancer Immune Monitoring and Analysis Centers (CIMACs) (U24)**

This NCI FOA solicits applications for multidisciplinary Cancer Immune Monitoring and Analysis Centers that will serve as the main units of the Network for correlative studies in clinical trials involving immunotherapy.

**Deadline for Application:** March 17, 2017

[Learn More >>](#)

### **Program in Innovative Therapeutics for Connecticut's Health (PITCH)**

With a grant from the State of Connecticut's Bioscience Innovation Fund, this three-year, \$10 million program provides translational research resources to generate prototype therapeutics that address unmet clinical needs.

**Deadline:** March 15

[Application >>](#)

Please contact [Jane Merkel](#) for more information

### **Cancer Immunologic Data Commons (CIDC) (U24)**

The purpose of this FOA is to solicit applications for establishment of a Cancer Immunologic Data Commons (CIDC) to provide bioinformatics support as part of a Network for correlative studies in clinical trials involving cancer immunotherapy.

**February 20; 2PM**

### **Yale Cancer Biology Institute Research Seminar**

Hope 216

*Chromatin Dysregulation as Driver of Oncogenesis*

Chao Lu, PhD

[Learn More >>](#)

**March 5; 7:30PM**

### **Yale Cancer Answers**

WNPR 90.5

*Colorectal Cancer Awareness Month- Screening and Prevention*

Xavier Llor, MD, PhD

[Learn More >>](#)

**March 6; 12PM**

### **YCC Epigenetics Interest Group Seminar Series**

BCMM 206/208

*Understanding Zygotic Genome Activation Using CRISPR-Cas9 Approaches*

Henry Shun Chan and Miguel Moreno-Mateos, PhD

[Learn More >>](#)

**March 6; 2PM**

### **Yale Cancer Biology Institute Research Seminar**

Brady Auditorium B-131

*Protein-Folding Chaperones Shape the Consequences of Human Genetic Variation*

Georgios Karras, PhD

[Learn More >>](#)

**March 6; 4PM**

### **VBT / Section of Cardiovascular Medicine Seminar**

TAC N-107

*Monocyte Heterogeneity in Cancer*

Catherine C. Hedrick, PhD

[Learn More >>](#)

**March 7; 9:30AM**

### **Pathology Research in Progress Talk**

TAC N-107

*Identification of Novel Sensors of Mitochondrial Oxidative Stress*



**Application Deadline:** March 17, 2017

[Learn More >>](#)

**Alliance for Cancer Gene Therapy Investigator's Award in Clinical Translation of Cell and Gene Therapy for Cancer**

ACGT is accepting letters of intent from tenure-track or tenured faculty conducting original, independent research in cancer cell and gene therapy leading directly to clinical translation.

**Letter of Intent Due:** March 21, 2017

[Learn More >>](#)

**SU2C-Lustgarten Foundation Pancreatic Cancer Interception Dream Team**

This grant will provide up to \$7 million over a four-year term to advance innovative approaches to intercept the disease-causing process.

**Letter of Intent Due:** March 22, 2017

[Learn More >>](#)

**Exploratory Grants in Cancer Epidemiology and Genomics Research (R21)**

This FOA invites applications for research on cancer epidemiology, genomics, and risk assessment.

**Application Receipt/Submission Date:** March 22, 2017

[Learn More >>](#)

**Pilot and Feasibility Studies Evaluating the Role of RNA Modifications (the 'epitranscriptome') in Cancer Biology (R21)**

This FOA encourages basic research into the role of RNA chemical modifications and their corresponding writers, readers and erasers in the initiation and progression of cancer.

**Application Receipt/Submission Date:** March 22, 2017

[Learn More >>](#)

**Clinical and Translational Exploratory/Developmental Studies (R21)**

This FOA supports the development of new exploratory research in cancer diagnosis, treatment, imaging, symptom/toxicity, and prevention clinical trials.

**Application Receipt/Submission Date:** March 22, 2017

Arvind Goswami, PhD

TBA

Erica Herzog MD, PhD

[Learn More >>](#)

**March 7; 12PM**

**YCC Grand Rounds**

Park Street Auditorium

TBA

Wendell Yarbrough, MD and Sarah Goldberg, MD

[Learn More >>](#)

**March 8; 12PM**

**EHS Seminar**

LEPH 101

*Metabolomics for identifying biomarkers and mechanisms of colon cancer*

Caroline Johnson, PhD

[Learn More >>](#)

**March 8; 1PM**

**YCC Cancer Metabolism Interest Group**

Giarman Room, SHM B-201

*Insulin Resistance and Colon Cancer: Pathogenic Mechanisms and Therapeutic Strategies*

Rachel Perry, PhD

[Learn More >>](#)

**March 8; 2PM**

**Therapeutic Radiology Special Seminar**

Brady Auditorium

*Expanding the Catalogue of Replicative DNA Polymerase*

Richard D. Wood, PhD

[Learn More >>](#)

**March 9; 8:30AM**

**Medical Grand Rounds**

Fitkin Amphitheatre

*Racial and Ethnic Disparities in Chronic Kidney Disease*

Harold I. Feldman, MD, MSCE

[Learn More >>](#)

**March 9; 9:00AM**

[Learn More >>](#)

### **Administrative Supplements to Promote Research Collaborations on Fusion Oncoproteins as Drivers of Childhood Cancer**

This Admin Supplement FOA is part of the Cancer Moonshot initiative to accelerate cancer research, and was developed in response to a recommendation from the Blue Ribbon Panel of experts charged with advising the National Cancer Advisory Board on the exceptional scientific opportunities that could be accelerated through this initiative.

**Deadline for Application:** March 28, 2017

[Learn More >>](#)

### **National Compassionate Caregiver of the Year Award**

The National Compassionate Caregiver of the Year (NCCY) Award is a national recognition program that elevates excellence in compassionate healthcare.

**Deadline for Nominations:** March 31, 2017

[Learn More >>](#)

### **Yale Cancer Center 2017 Internal Collaborative (Co-Pilot) Grant Program**

YCC is pleased to announce the 2017 Internal Co-Pilot Grant competition. Members of Yale Cancer Center or faculty who have applied for membership are eligible to apply.

**Letter of Intent Due:** April 3, 2017 to be emailed to [janice.zulkeski@yale.edu](mailto:janice.zulkeski@yale.edu)

[Learn More >>](#)

---

## **Recent Publications**

### **Co-targeting the HER and IGF/insulin receptor axis in breast cancer, with triple targeting with endocrine therapy for hormone-sensitive disease.**

Chakraborty A, Hatzis C, DiGiovanna MP.  
Breast Cancer Res Treat. 2017 Feb 24.

[Read More >>](#)

### **Tissue-scale coordination of cellular behaviour promotes epidermal wound repair in live mice.**

Park S, Gonzalez DG, Guirao B, Boucher JD, Cockburn K, Marsh ED, Mesa KR, Brown S, Rompolas P,

### **Therapeutic Radiology Grand Rounds**

Smilow LL505

*Psycho-Oncology for Radiation Oncologists*  
Pochu Ho, MD

[Learn More >>](#)

### **March 9; 2:30PM**

#### **Smilow Cancer Genetics and Prevention Program Seminar**

SRC, Suites 107-109

[Learn More >>](#)

### **March 10; 7:30AM**

#### **Yale Prostate Cancer SPORE Conference**

West Campus

*Developing Yale's Prostate Research Program for SPORE*

Daniel W. Lin, MD

[Learn More >>](#)

### **March 11; 7AM**

#### **Prostate Cancer / CME Conference**

TAC N-107

*The Evolving Role of Imaging in the Diagnosis and Treatment of Prostate Cancer*

Daniel W. Lin, MD

[Learn More >>](#)

### **March 12; 7:30PM**

#### **Yale Cancer Answers**

WNPR 90.5

*Colorectal Cancer Awareness Month: Radiation Therapy*

Kimberly Johung, MD, PhD

[Learn More >>](#)

### **March 13; 2PM**

#### **Yale Cancer Biology Institute Research Seminar**

Brady Auditorium

*Quantifying the Protein-Level Control of Genetic Diseases and Cancers*

Yansheng Liu, PhD, MS

[Learn More >>](#)

### **March 13; 2PM**

#### **Yale Stem Cell Center Seminar Series**

TAC N-107

Haberman AM, Bellaïche Y, Greco V.  
Nat Cell Biol. 2017 Mar 1;19(2):155-163.

[Read More >>](#)

### **Using the National Cancer Database for Outcomes Research: A Review.**

Boffa DJ, Rosen JE, Mallin K, Loomis A, Gay G, Palis B, Thoburn K, Gress D, McKellar DP, Shulman LN, Facktor MA, Winchester DP.

JAMA Oncol. 2017 Feb 23.

[Read More >>](#)

### **Extracellular renalase protects cells and organs by outside-in signalling.**

Wang Y, Safirstein R, Velazquez H, Guo XJ, Hollander L, Chang J, Chen TM, Mu JJ, Desir GV.

J Cell Mol Med. 2017 Feb 26.

[Read More >>](#)

### **Treatment delays in oral cavity squamous cell carcinoma and association with survival.**

Fujiwara RJ, Judson BL, Yarbrough WG, Husain Z, Mehra S.

Head Neck. 2017 Feb 25.

[Read More >>](#)

### **The Scaffolding protein NHERF1 Regulates the Stability and Activity of the Tyrosine Kinase HER2.**

Jeong J, Vanhouten JN, Kim W, Dann P, Sullivan C, Choi J, Sneddon WB, Friedman PA, Wysolmerski JJ.

J Biol Chem. 2017 Feb 24.

[Read More >>](#)

### **Risk factors and surveillance for reduced bone mineral density in pediatric cancer survivors.**

Siegel DA, Claridy M, Mertens A, George E, Vangile K, Simoneaux SF, Meacham LR, Wasilewski-Masker K.

Pediatr Blood Cancer. 2017 Feb 24.

[Read More >>](#)

### **PET Imaging Evaluation of Four Novel Sigma-1 Radiotracers in Nonhuman Primates.**

Baum EJ, Cai Z, Bois F, Holden D, Lin SF, Lara-Jamie T, Kapinos M, Chen YY, Deuther-Conrad W, Fischer S, Dukic-Stefanovic S, Bunse P, Wunsch B, Brust P, Jia H,

*Global Acceleration of Replication Forks During an Erythroid Cell Fate Decision*

Merav Socolovsky, PhD

[Learn More >>](#)

### **March 14; 9:30AM**

#### **Pathology Research in Progress Talks**

TAC N-107

TBA

Stefan Avey and Greg Breuer

[Learn More >>](#)

### **March 14; 12PM**

#### **Yale Cancer Center Schwartz Center Rounds**

Park Street Auditorium

[Learn More >>](#)

### **March 15; 5PM**

#### **31st Annual Gerald Klatskin, MD Memorial Lectureship in Hepatology**

Fitkin Amphitheatre

*Evolving Scenario of Liver Cancer in Hepatitis C*

Massimo Colombo, MD

[Learn More >>](#)

### **March 16; 8:30AM**

#### **Medical Grand Rounds / The 31st Annual Gerald Klatskin Memorial Lecture**

Fitkin Amphitheatre

*State of the Art Management of Hepatocellular Carcinoma (HCC)*

Massimo Colombo, MD

[Learn More >>](#)

### **March 16; 12:30PM**

#### **Pathology Grand Rounds**

LMP 1094

*Pathologic, Molecular & Genomic Characterization of Adrenocortical Carcinoma*

Thomas Giordano, MD, PhD

[Learn More >>](#)

### **March 16; 2:30PM**

#### **Smilow Cancer Genetics and Prevention Program Seminar**

Huang Y.

J Nucl Med. 2017 Feb 23.

[Read More >>](#)

**PD-L1 Studies Across Tumor Types, its Differential Expression and Predictive Value in Patients Treated with Immune Checkpoint Inhibitors.**

Kluger HM, Zito CR, Turcu G, Baine M, Zhang H, Adeniran A, Sznol M, Rimm DL, Kluger Y, Chen L, Cohen JV, Jilaveanu LB.

Clin Cancer Res. 2017 Feb 21.

[Read More >>](#)

**Evaluations of Implementation at Early-adopting Lung Cancer Screening Programs: Lessons Learned.**

Gesthalter YB, Koppelman E, Bolton R, Slatore CG, Yoon SH, Cain HC, Tanner NT, Au DH, Clark JA, Wiener RS.

Chest. 2017 Feb 18.

[Read More >>](#)

**Current Management Strategy for Active Surveillance in Prostate Cancer.**

Syed JS, Javier-Desloges J, Tatzel S, Bhagat A, Nguyen KA, Hwang K, Kim S, Sprenkle PC.

Curr Oncol Rep. 2017 Feb;19(2):11.

Syed JS, Javier-Desloges J, Tatzel S, Bhagat A, Nguyen KA, Hwang K, Kim S, Sprenkle PC.

Curr Oncol Rep. 2017 Feb;19(2):11.

[Read More >>](#)

SRC, Suites 107-109

[Learn More >>](#)

**March 17; 12PM**

**YCC Research in Progress Seminar**

NP4-101B

TBA

Kurt Schalper, MD, PhD

[Learn More >>](#)



**Submissions**

Please submit your recent publication and grant announcements to:

**Renee Gaudette**

Director, Public Affairs & Communications

[renee.gaudette@yale.edu](mailto:renee.gaudette@yale.edu)

