

April 1, 2022

From Eric's Desk

Perhaps the worst of the winter is finally behind us. Warm weather should be coming soon, and I am looking forward to dining *al fresco* in New Haven. Although my own honeymoon period is coming to an end, Yale Cancer Center and Smilow feel like home and the potential here is unlimited.

I want to provide you with a some very encouraging updates on our Clinical Trials Office. In February, there were 49 accruals to therapeutic clinical trials. This represents the largest number of accruals in many months and is similar to our accrual a year ago. Since January, the CTO leadership has hired 12 new staff, including 4 clinical research nurses, 3 clinical research coordinators, 3 regulatory research assistants, and 1 activation manager. There are also 4 individuals in the interview stage, 2 of whom would fill clinical research nurse positions.

There are now 1-2 CTO training sessions per week, which include lectures from our faculty on various malignancies. We hope to increase the frequency and breadth of these lectures. And 4 DARTS—breast, GI, lung, and phase I—are accruing to trials without any outside restrictions. Fewer than 10% of the DARTS are on accrual hold and we anticipate that all will be enrolling patients by May 1. One area of concern, however, relates to regulatory affairs. There is a national shortage of regulatory affairs specialists. The group is doing its best but needs additional staff, and we are working on creative solutions to hire more people.

Under the new leadership of Ian Krop, MD, PhD, our Chief Clinical Research Officer, and Nirmala Thevathasan, Interim Administrative Director, a group has been diligently meeting to redesign the Clinical Trials Office with the goal of developing a model CTO. Ian and Nirmala are focused on building a CTO that will facilitate faculty research, maximize both accrual and patient safety, and be efficient and compliant from a regulatory perspective. Given the tremendous support we have from both YSM and YNHH, I am confident they will be successful in their efforts.

You will be hearing more about the Clinical Trials Office in the weeks ahead. I am both proud of and very pleased with the work that has been done. Please read further in DirectConnect today to learn about next week's AACR meeting and several faculty members who have recently received AACR awards, including Dr. Escobar-Hoyos, Dr. Medici, and Dr. Blenman. Congratulations to all!

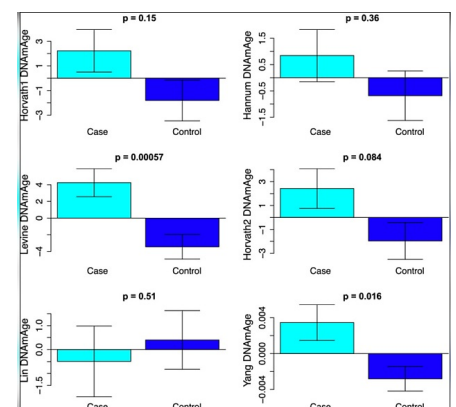
from the desk of
Eric P. Winer, MD
Director, Yale Cancer Center
Physician-in-Chief,
Smilow Cancer Hospital

Yale
NewHaven
Health
Smilow Cancer
Hospital

Yale **CANCER**
CENTER
A Comprehensive Cancer Center Designated
by the National Cancer Institute

News Center

Yale Research Reveals “Biologically Older” Tissue in Patients with Breast Cancer



Read More

Have a great weekend. I will touch base again in two weeks.

Eric

Announcements

Yale Scientists Presenting at AACR Annual Meeting



Yale Cancer Center and Smilow Cancer Hospital scientists and clinicians are presenting research studies at the 2022 Annual Meeting of the American Association for Cancer Research beginning next Friday, April 8. The program will feature a range of impactful cancer research and clinical translation lectures, posters, and symposia.

If you are attending the annual meeting, please take the time to support your colleagues in New Orleans. A full list of Yale Cancer Center participation is available [online](#).

Notables

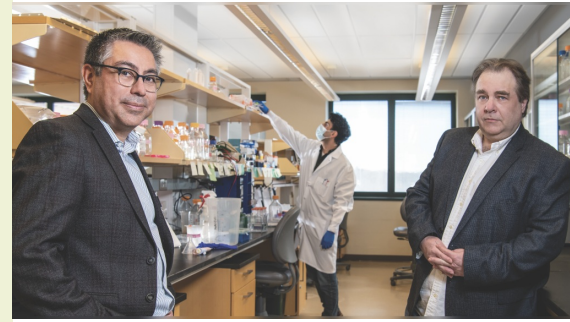
Earlier this week, **Ian Krop, MD, PhD**, newly appointed Chief Clinical Research Officer and Director of the Clinical Trials Office, shared Yale Cancer Center and Smilow Cancer Hospital's appreciation for the leadership **Roy S. Herbst, MD, PhD**, Deputy Director for Clinical Affairs, and **Alyssa Gateman, MPH, CCRP**, Senior Associate Director, Quality Assurance, YCCI, brought to the Clinical Trials Office throughout 2021. Dr. Herbst and Alyssa stepped in to offer expertise, guidance, and stability for the CTO staff and operations.



The American Association for Cancer Research (AACR) has presented two awards to further diversity, equity, and inclusion in cancer research to the Escobar-Hoyos Lab, under the direction of **Luisa Escobar-Hoyos, MSc**,

[Read More](#)

The Growth of the Cancer Biology Institute



[Read More](#)

Pan-Cancer Genomic Data Analysis Identifies Prognostic Biomarkers



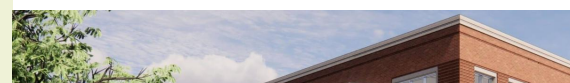
[Read More](#)

Yale Scientists Deploy Chemical Tools to Detect Cancer-causing Proteins



[Read More](#)

Why Our Hospital is Determined to Build a State of the Art Cancer Center for Greenwich



PhD, Assistant Professor of Therapeutic Radiology and a member of Yale Cancer Center's Radiobiology and Radiotherapy Research Program. Dr. Escobar-Hoyos is the 2022 recipient of an **AACR Career Development Award**. A postdoctoral associate in the Escobar-Hoyos laboratory, **Natasha Pinto Medici, PhD**, is the recipient of a **2022 AACR Career Development Award** to further diversity, equity, and inclusion in cancer research.

Kim Blenman, PhD, MS, Assistant Professor of Medicine (Medical Oncology) and of Computer Science, has been selected for a **2022 Joint Breast Cancer Research Foundation-American Association for Cancer Research (BCRF-AACR) Career Development Award** to advance her research in "Characterization of pre-existing autoantibodies in breast cancer." The award will help Dr. Blenman advance her career interest in building a Treatment Emergent Adverse Events profiling program for Yale Cancer Center and Smilow Cancer Hospital.

Niketa Shah, MD, Associate Professor of Pediatrics (Hematology/Oncology) and Director of the Pediatric Stem Cell Transplant and Cellular Therapy Program, presented her research on the "Impact of Including Abatacept for Graft-Versus-Host Disease Prophylaxis in Allogeneic Stem Cell Transplantation for Hemoglobinopathy" at the **48th Annual Meeting of the European Society for Blood and Marrow Transplantation** earlier this month.

The **National Comprehensive Cancer Network** is hosting their annual conference, including several presentations from Yale Cancer Center and Smilow Cancer Hospital:

Plenary Session: The Patient Journey: Access to Cancer Care

Anne Chiang, MD, PhD, Associate Professor of Medicine (Medical Oncology)

Locoregional Management of Patients with Early-Stage Breast Cancer

Meena S. Moran, MD, Professor of Therapeutic Radiology

Strategies and Initiatives to Improve New Patient Access to Cancer Care

Sarah Schellhorn Mougalian, MD, Associate Professor of Medicine (Medical Oncology)

Preventive Health in Cancer Survivors

Tara Sanft, MD, Associate Professor of Medicine (Medical Oncology)

Yale Cancer Center's **Cancer Prevention and Control Research Program** welcomes **Hermine Poghosyan, PhD, MPH**, Associate

Professor of Nursing. Dr. Poghosyan's program of research focuses on maximizing the health and well-being of cancer patients and their family members. She studies health disparities, social determinants of health, and health risk behaviors in the cancer population. Over the past four years Dr. Poghosyan has developed and managed multiple



[Read More](#)

[Attacking Cancer Cells from the Outside](#)



[Read More](#)

Follow us!

facebook



YouTube



Instagram



YALE CANCER ANSWERS

rigorous cancer and behavioral research studies using advanced innovative, quantitative, and mixed methods.



Diversity, Equity, and Inclusion

Minority Organization for Retention and Expansion (MORE)

A Q&A with **Kim Blenman, PhD, MS**, recently appointed as a co-director of MORE

1. What is MORE?

KRMB: The Yale School of Medicine Minority Organization for Retention and Expansion (MORE) seeks to accelerate the appointment and retention of underrepresented minority faculty members and enhance their professional environment.



2. What are MORE's core focus areas?

KRMB: We have three core focus areas: (1) Mentorship and promotion of existing underrepresented minority faculty; (2) Recruitment of additional underrepresented minority faculty; and (3) Partnership with other Yale entities such as YSM Dean's Office, YSM Office of DEI, YSM SWIM, YSM OADP, Yale University Provost Office, and Yale New Haven Health System Minority Housestaff Organization.

3. How have you personally benefited from MORE?

KRMB: I have personally benefited from MORE through being able to meet and network with individuals with similar lived experiences. For me, there was substantial value in gathering and talking about Yale culture, professional development, and academics in general.

Society's Racism, not Our Race, is the Social Determinant of Our Health

Please join the Medical Student Council for their Perspectives on Medicine series on Thursday, April 7, at 12:00pm with a lecture from Carmen Black, MD, Assistant Professor of Psychiatry. Dr. Black will present, "Society's Racism, not Our Race, is the Social Determinant of Our Health," via **Zoom**.

Advancing Transgender and Gender Diverse Visibility and Inclusion

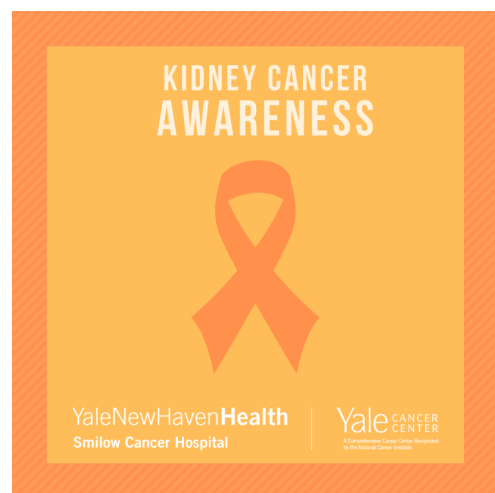
If you missed our Grand Rounds presentation on "Advancing Transgender and Gender Diverse Visibility and Inclusion and Data Accuracy in Oncology" with Juno Obedin-Maliver, MD, MPH, MAS, (she/her/hers), Assistant Professor, Obstetrics and Gynecology, and Epidemiology & Population Health, Stanford University School of Medicine, and Ash Albert, MD, MFA,

At Smilow Cancer Hospital and at our Smilow Cancer Hospital Care Centers, we are fortunate to have compassionate, world-class physicians. We are appreciative of our doctors for their tireless efforts to treat and comfort our patients every day. On #NationalDoctorsDay, we encourage you to share your appreciation for your Smilow doctors in the comments below.



[Read More](#)

Kidney cancer can be due to a hereditary cause. Understanding your family history is an important part in determining if there is a hereditary risk for kidney cancer and other cancers in your family.



[Read More](#)

Dr. Michael Cecchini in honor of #ColorectalCancerAwarenessMonth – "We learn what members of our community are doing to advance colorectal cancer research and ways we can collaborate both within and outside Yale."

(they/them/theirs), Hematology and Medical Oncology Fellow, Wilmot Cancer Institute, University of Rochester Medical Center, and are interested in learning more, you can watch the Grand Rounds **online**, or review their **slides**.

Employee Profile: Kirsten Pedersen, MSN, RN

Kirsten Pedersen, Smilow Nursing Professional Development Specialist (NPDS), started at Yale in 1982 as a student clinical assistant and will retire this month after nearly 40 years of service! She made the transition to oncology when her mother was diagnosed with breast cancer and has never looked back. Since 2011, Kirsten has been supporting inpatient and ambulatory hematology-oncology and stem cell transplantation in the NPDS role.

For the first year in oncology, Kirsten worked as a nursing assistant and then went on to be hired as a new graduate nurse to the oncology unit.

During this time, she saw the unit through many physical moves and supported the opening of the bone marrow transplant unit. Kirsten personally administered the first autologous stem cells at YNH as well as the first allogeneic stem cells, donor lymphocytes, and tumor infiltrating cells. She was among the first nurses nationally to achieve Oncology Certified Nurse status in 1998 and one of the first 300 nurses nationally to pass the Bone Marrow Transplant Nursing Certification in 2014.

Kirsten completed her Master of Nursing Science in Education in 2017 and her excellence in oncology care has garnered her several awards including the Excellence in Oncology Nursing from the American Cancer Society in 1993 and the Nightingale award in 2003. She has authored and co-authored several posters that have been presented nationally at the Oncology Nursing Congress. Kirsten is also proud of her work on central line-associated bloodstream infection initiatives and has served as an expert on central venous catheters throughout her career. Kirsten has oriented countless new nurses as a staff nurse, and has onboarded and helped to develop many nurses in her role as a NPDS over her tenure, generously sharing her expertise and wisdom. Her humor and ability to make people laugh is also memorable.

There will be a farewell gathering on Monday, April 4th in the Park Street Auditorium between 2-4PM for those that would like to stop by and wish

Kirsten well!

Recent Publications



"A colonoscopy is a very powerful tool to both diagnose colon cancer early, but also to help prevent colon cancer. Pre-malignant polyps that might otherwise develop into cancer can be removed by a colonoscopy, thus preventing the development of colorectal cancer. The screening guidelines now recommend adults start colonoscopy screening at age 45."

Michael Cecchini, MD

#colorectalcancerawarenessmonth
#GetScreened



YaleNewHavenHealth
Smilow Cancer Hospital

Yale CANCER CENTER
A Comprehensive Cancer Center Program
at the Smilow Cancer Hospital

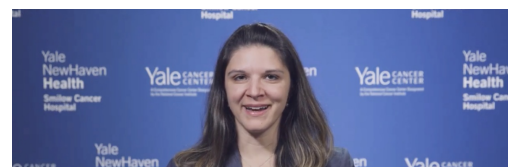
Read More

Tune in to Yale Cancer Answers, our weekly radio program featuring the latest in cancer information and research advances. This week, Dr. Daryl Klein discussed his research into Molecular Mechanisms of Cancer. Listen on Connecticut Public Radio or download our podcast from iTunes.



Read More

"I work with my patients and find out about their lives to figure out the best reconstruction for them," Dr. Melissa Mastroianni on her role as a plastic and reconstructive surgeon at Smilow Cancer Hospital.



Sanft, T.

On Crying

The Oncologist, Online ahead of print.

[Read More](#)

Peng L, Hu Y, Mankowski MC, Ren P, Chen RE, Wei J, Zhao M, Li T, Tripler T, Ye L, Chow RD, Fang Z, Wu C, Dong MB, Cook M, Wang G, Clark P, Nelson B, Klein D, Sutton R, Diamond MS, Wilen CB, Xiong Y, Chen S.

Monospecific and Bispecific Monoclonal SARS-CoV-2 Neutralizing Antibodies That Maintain Potency against B.1.617

Nature Communications, 13(1):1638.

[Read More](#)

Crawford LR, Neparidze N.

Refractory Autoimmune Hemolytic Anemia in Systemic Lupus Erythematosus Patient: A Clinical Case Report

Clinical Case Reports, 10(3):e05583.

[Read More](#)

Gong Y, Liu Z, Yuan Y, Yang Z, Zhang J, Lu Q, Wang W, Fang C, Lin H, Liu S.

PUMILIO Proteins Promote Colorectal Cancer Growth via Suppressing p21

Nature Communications, 13(1):1627.

[Read More](#)

Burtness B, Rischin D, Greil R, Soulières D, Tahara M, de Castro G Jr, Psyrris A, Brana I, Basté N, Neupane P, Bratland Å, Fuehrer T, Hughes BGM, Mesia R, Ngamphaiboon N, Rordorf T, Wan Ishak WZ, Ge J, Swaby RF, Gumuscu B, Harrington K.

Pembrolizumab alone or with Chemotherapy for Recurrent/Metastatic Head and Neck Squamous Cell Carcinoma in KEYNOTE-048: Subgroup Analysis by Programmed Death Ligand-1 Combined Positive Score

Journal of Clinical Oncology, Online ahead of print.

[Read More](#)

Abi-Raad R, Prasad ML, Adeniran AJ, Cai G.

Copy Number Variations Identified in Thyroid FNA Specimens Are Associated with Hürthle Cell Cytomorphology

Cancer Cytopathology, Online ahead of print.

[Read More](#)

Kovalyova Y, Bak DW, Gordon EM, Fung C, Shuman JHB, Cover TL, Amieva MR, Weerapana E, Hatzios SK.

An Infection-induced Oxidation Site Regulates Legumain Processing and Tumor Growth

Nature Chemical Biology, Online ahead of print.

[Read More](#)

Ruffini E, Rami-Porta R, Huang J, Ahmad U, Appel S, Bille A, Boubia S, Brambilla C, Cangir AK, Cilento V, Detterbeck F, Falkson C, Fang W, Filosso PL, Giaccone G, Girard N, Guerrero F, Infante M, Kim DK, Lucchi M, Marino M, Marom EM, Nicholson AG, Okumura M, Rimner A, Simone CB 2nd, Asamura H. **Members of the IASLC Staging and Prognostic Factors**



Watch Now

Shagunna “Renee” Muse, Administrative Manager for Women's Oncology (left), and Camille Servodidio, RN, MPH, Program Manager (right), join Yale New Haven Health CEO, Marna Borgstrom, at a recent send-off tea to share their well-wishes ahead of her retirement today.

Marna, congratulations and thank you for your 43 years of service!



[Read More](#)

Dr. Michael Hurwitz explains why kidney cancer is biologically considered an outlier and shares the team approach at Smilow Cancer Hospital available to care for patients, in honor of Kidney Cancer Awareness Month.

“

Though we know a lot about the biology that often causes kidney cancer, it does not fit neatly into the patterns that we expect for most cancers. These unusual features of its biology drew me to kidney cancer research and treatment and have kept me fascinated over the years.”



Sumida T, members of the IASLC Staging and Prognostic Factors Committee and of the Advisory Boards.

The IASLC Thymic Epithelial Tumors Staging Project: Unresolved Issues to be Addresses for the Next 9th Edition of the TNM Classification of Malignant Tumors

Journal of Thoracic Oncology, Online ahead of print.

[Read More](#)

Pagliano O, Morrison RM, Chauvin JM, Banerjee H, Davar D, Ding Q, Tanegashima T, Gao W, Chakka SR, DeBlasio R, Lowin A, Kara K, Ka M, Zidi B, Amin R, Raphael I, Zhang S, Watkins SC, Sander C, Kirkwood JM, Bosenberg M, Anderson AC, Kuchroo VK, Kane LP, Korman AJ, Rajpal A, West SM, Han M, Bee C, Deng X, Schebye XM, Strop P, Zarour HM.

Tim-3 Mediates T Cell Trogocytosis to Limit Antitumor Immunity

Journal of Clinical Investigation, Online ahead of print.

[Read More](#)

The Effects of Androgen Deprivation on Working Memory and Quality of Life in Prostate Cancer Patients: The Roles of Hypothalamic Connectivity

Cancer Medicine, Online ahead of print.

[Read More](#)

Chan LH, Yan Q.

Awakening KDM5B to Defeat Leukemia

Proceedings of the National Academy of Science, 119(13):e2202245119.

[Read More](#)

Biancon G, Joshi P, Zimmer JT, Hunck T, Gao Y, Lessard MD, Courchaine E, Barentine AES, Machyna M, Botti V, Qin A, Gbyli R, Patel A, Song Y, Kiefer L, Viero G, Neuenkirchen N, Lin H, Bewersdorf J, Simon MD, Neugebauer KM, Tebaldi T, Halene S.

Precision Analysis of Mutant U2AF1 Activity Reveals Deployment of Stress Granules in Myeloid Malignancies

Molecular Cell, 82(6):1107-1122.e7.

[Read More](#)

Sumida TS, Dulberg S, Schupp JC, Lincoln MR, Stillwell HA, Axisa PP, Comi M, Unterman A, Kaminski N, Madi A, Kuchroo VK, Hafler DA.

Type I Interferon Transcriptional Network Regulates Expression of Coinhibitory Receptors in Human T Cells

Nature Immunology, Online ahead of print.

[Read More](#)

Gandhi S, Klein J, Robertson AJ, Peña-Hernández MA, Lin MJ, Roychoudhury P, Lu P, Fournier J, Ferguson D, Mohamed Bakhsh SAK, Catherine Muenker M, Srivathsan A, Wunder EA Jr, Kerantzas N, Wang W, Lindenbach B, Pyle A, Wilen CB, Ogbuagu O, Greninger AL, Iwasaki A, Schulz WL, Ko AI.

De novo Emergence of a Remdesivir Resistance Mutation during Treatment of Persistent SARS-CoV-2 Infection in an Immunocompromised Patient: A Case Report

Nature Communications, 13(1):1547.

[Read More](#)



[Read More](#)

David Klein was diagnosed with acute myeloid leukemia (AML) in March 2021 and quickly treated with two chemotherapy drugs and immunotherapy. During his treatment, he required multiple blood transfusions. Eventually, he was able to receive a stem cell transplant under the care of Stuart Seropian, MD.

Because of David's experience, and realizing the need for blood donation firsthand, he and his wife Jan have become advocates for blood donation and have convinced many family members and friends to donate. They are now hosting a blood drive on Sunday, April 3rd from 8 am to 1 pm at the Noah Webster Microsociety Magnet School in Hartford, CT.



[Read More](#)

On National Certified Nurses Day, we honored over 230 nurses at Smilow Cancer Hospital and our Smilow Cancer Hospital Care Centers who are specialty certified and dedicate their days to caring for our patients. Thank you for your compassion, commitment, achievements, and attentiveness to patient safety.



Bewersdorf JP, Patel KK, Goshua G, Shallis RM, Podoltsev NA, Huntington SF, Zeidan AM.

Cost-effectiveness of Liposomal Cytarabine/Daunorubicin in Patients with Newly Diagnosed Acute Myeloid Leukemia

Blood, 139(11):1766-1770.

[Read More](#)

Leitner BP, Siebel S, Akingbesote ND, Zhang X, Perry RJ.

Insulin and Cancer: A Tangled Web

Biochemical Journal, 479(5):583-607.

[Read More](#)

Funding and Award Opportunities

SITC FELLOWSHIPS for Early Career Scientists

SITC is dedicated to assisting investigators in advancing the science of immunotherapy and developing new therapeutic approaches. To further this goal, we are offering eight Fellowships and Technology Awards, totaling \$680,000 in funding. These Fellowships and Technology Awards are only available to SITC members.

- **Bristol Myers Squibb Postdoctoral Cancer Immunotherapy Translational Fellowship**
- **Amgen Cancer Immunotherapy in Hematologic Malignancies Fellowship**
- **AstraZeneca Immunotherapy in Lung Cancer Clinical Fellowship**
- **Merck Cancer Immunotherapy Clinical Fellowship**
- **Genentech Women in Cancer Immunotherapy Fellowship**
- **Nektar Therapeutics Equity and Inclusion in Cancer Immunotherapy Fellowship**
- **Mallinckrodt Pharmaceuticals Adverse Events in Cancer Immunotherapy Clinical Fellowship**
- **Natera ctDNA Immunotherapy Response Monitoring Fellowship and Technology Award**

Application Deadline: April 5, 2022

[Read More](#)

Yale Head and Neck SPORE (YHN-SPORE) Developmental Research Program (DRP)

The Yale Head and Neck SPORE's DRP provides seed money to investigators to support studies with a strong translational component that have the potential to evolve into, or be incorporated as, a full YHN-SPORE project or to generate preliminary data or evidence of collaboration for other new NIH grant applications.

Letter of Intent (optional) Due: April 7, 2022

Full application Due: May 20, 2022

[Read More](#)

Yale Head and Neck SPORE (YHN-SPORE) Career Enhancement Program (CEP)

The CEP of the Yale Head and Neck SPORE has been established to educate the next generation of investigators committed to translational research in head and neck cancer. The CEP will provide support to promising junior investigators and/or established investigators who have not previously conducted head and neck cancer focused research.

Letter of Intent (optional) Due: April 7, 2022



[Read More](#)



Stigma based on medical illness is truly devastating. There is almost always a silver lining, even in dark situations. Science is incredible—it's remarkable what we achieve as a community. Access to care is critical & we have to do better.



Research led by @MariyaRozenblit & @DrMorganLevine reveals "biologically older" tissue in patients with #breastcancer



Register to join us for a Smilow Shares webinar on the latest advances in #kidneycancer tomorrow, March 31 at 7pm.



Pan-Cancer Analysis identifies: Genomic biomarkers linked with patient outcome. Copy number alterations & transcripts are more prognostic than mutations. Oncogenes & successful cancer drug targets are rarely prognostic.



Join us at Noon today for Yale Cancer Center Grand Rounds. Dr. Ben Turk discusses Oncogenic MAP Kinase Signaling Networks and @GraceKongPhD shares ways to leverage social media to curb tobacco use in adolescents.



@MariyaRozenblit & @maryam_justberg share their perspective on sacituzumab govitecan for metastatic triple negative #breastcancer #TNBC in an editorial published in the Annals of Translational Medicine.



Dr. Victor Chang on #ColorectalCancerAwarenessMonth – "Recent advances in #colorectalcancer are possible because of better understanding of hereditary factors and molecular genetics."



In @JCO_ASCO, @BarbaraBurtne shares results of KEYNOTE 048: increased benefit of

Letter of Intent (optional) Due: April 7, 2022

Full Application Due: May 20, 2022

[Read More](#)

MRA Dermatology Fellowship & Junior Faculty Awards

The aim of this program is to drive greater interest and focus on melanoma in clinical practice and research related to the prevention, detection, diagnosis, and staging of melanoma.

- **MRA Dermatology Fellows Award (1 Year, \$35,000):** Supports dermatology residents, fellows, or post-docs in a dermatology program with research, demonstration, and/or pilot programs focused on melanoma prevention or improving early detection, diagnosis, or prognosis.
- **MRA Dermatology Junior Faculty/Clinical Instructor Award (Up to 2 Years, \$50,000 per year):** Supports new dermatology faculty (clinical instructors or new assistant professors) working in research on melanoma prevention or improving early detection, diagnosis, or prognosis.

Application Deadlines: April 20, 2022

[Read More](#)

Yale SPORE in Lung Cancer Career Enhancement Program (CEP)

The CEP of the Yale SPORE in Lung Cancer has been established to educate the next generation of investigators committed to translational research in lung cancer. The CEP will provide support of up to \$50,000 to promising junior investigators and/or establish investigators who have not previously conducted lung cancer focused research.

Letters of Intent Due: April 22, 2022

[Read More](#)

Yale SPORE in Lung Cancer Developmental Research Program (DRP) Award

The DRP of the Yale SPORE in Lung Cancer provides seed money to investigators to support studies with a strong translational component that have the potential to evolve into, or be incorporated as, a full Yale SPORE in Lung Cancer project. The purpose is also to generate preliminary data or evidence of collaboration for new NCI grant applications.

Letters of Due: April 22, 2022

[Read More](#)

Innovative Biospecimen Science Technologies for Basic and Clinical Cancer Research (R61)

This FOA solicits grant applications proposing exploratory research projects focused on the early-stage development of highly innovative technologies that improve the quality of the samples used for cancer research or clinical care.

This includes new capabilities to address issues related to pre-analytical degradation of targeted analytes during the collection, processing, handling, and/or storage of cancer-relevant biospecimens. The overall goal is to

support the development of highly innovative technologies capable of maximizing or otherwise interrogating the quality and utility of biological samples used for downstream analyses.

Application Deadline: April 22, 2022

[Read More](#)

Advanced Development and Validation of Emerging Biospecimen Science Technologies for Basic and Clinical Cancer Research (R33)

This FOA solicits grant applications proposing exploratory research projects

KEYNOTE-048—increased benefit of #immunotherapy with increasing PD-L1 expression in head & neck cancer (HNC)—and validates the benefit of immunotherapy in PD-L1 low to intermediate HNC.



Join us today at noon for the 4th @ASH_hematology review session on #Leukemia hosted by @Dr_AmerZeidan and @Dr_RoryShallis @YaleHematology.



Congratulations to Luisa Escobar-Hoyos, MSc, PhD, recipient of an @AACR Career Development Award to further Diversity, Equity, and Inclusion in Cancer Research and Natasha Pinto Medici, PhD, recipient of an AACR fellowship!



Thank you to @ObedinMaliver @StanfordMed and @ash_alpert @WilmotCancer for joining @YaleCancer Grand Rounds and sharing key steps towards providing more inclusive #oncology care to #transgender and #genderdiverse people <http://youtu.be/0F3O-s-1m5U>.



New research from Dr. Frederick Wilson @AACR Clinical Cancer Research reveals a new class of #oncogenic fusions in #lung and #pancreatic cancer, suggesting a potential treatment strategy for advanced tumors



.@Cecchini_OncMD in honor of ColorectalCancerAwarenessMonth – “We learn what members of our community are doing to advance #colorectalcancer research and ways we can collaborate both within and outside @Yale.”



.@theNCI awarded @YaleCancer and @YSPH a U01 grant to support research into the impact of diet and exercise for women with #ovariancancer. @mirwin_yale will lead the project with Dr. Tracy Crane @SylvesterCancer and

colleagues

Calendar

2022 Yale Healthcare Conference

April 1; 8:00 AM

Jaewon Ryu, MD, JD | Elizabeth Rosenthal,

This FOA solicits grant applications proposing exploratory research projects focused on further development and validation of emerging technologies that improve the quality of the samples used for cancer research or clinical care. This includes new capabilities to address issues related to pre-analytical degradation of targeted analytes during the collection, processing, handling, and/or storage of cancer-relevant biospecimens. This FOA solicits R33 applications where major feasibility gaps for the technology or methodology have been overcome, as demonstrated with supportive preliminary data, but still require further development and rigorous validation to encourage adoption by the research community.

Application Deadline: April 22, 2022

[Read More](#)

Diversity Enhancement Program in Oncology at Yale Cancer Center RFA

The Diversity Enhancement Program in Oncology is an initiative established by the Section of Medical Oncology at YCC. The Program is designed to foster underrepresented in medicine (URiM) trainees' interest in careers in hematology/medical oncology (heme/onc) and to build a pipeline to bring URiM candidates to the YCC Heme/Onc Fellowship Program and YCC-Advanced T32 Training Program for Physician-Scientists.

Application Deadline: April 29, 2022

[Read More](#)

Lung Cancer Research Foundation 2022 RFAs

In keeping with our mission, the LCRF grant program provides funding for research into the prevention, diagnosis, treatment, and cure of lung cancer.

- LCRF Minority Career Development Award (CDA) in Lung Cancer - Application Deadline: May 27, 2022
- LCRF Pilot Grant - Letter of Intent Due: April 30, 2022
- LCRF Research Grant on Early-Detection and Pre-Neoplasia in Lung Cancer - Letter of Intent Due: April 30, 2022
- LCRF Research Grant on Oncogene Driven Lung Cancer - Letter of Intent Due: April 30, 2022

[Read More](#)

Yale Center for Gastrointestinal Cancers (CGIC) Seed Grant Program

This intramural seed grant program is designed to provide pilot funding for team-based basic, translational, clinical, or population health research projects focused on GI cancers.

Application Deadline: May 1, 2022

[Read More](#)

Emergency Awards: RADx-UP - Social, Ethical, and Behavioral Implications (SEBI) Research on Disparities in COVID-19 Testing among Underserved and Vulnerable Populations (U01)

The goal of this RADx[®]-UP FOA is to conduct social, ethical, and behavioral implications (SEBI) research to understand and reduce barriers to COVID-19 testing, as well as COVID-19 disparities that arise from barriers to testing among underserved and vulnerable populations. The funding for this initiative is provided from the American Rescue Plan Act of 2021, PL 117-2.

Application Deadline: May 2, 2022

[Read More](#)

Emergency Award: RADx-UP Community-Engaged Research on Rapid SARS-CoV-2 Testing among Underserved and Vulnerable Populations (U01)

MD | Sten H. Vermund, MD, PhD

[Learn More](#)

Endocrinology Clinical Dilemma

April 1; 12:00 PM

Carolina Gonzalez-Lopez

[Learn More](#)

Yale ASH 2021 Highlights

April 1; 12:00 PM

Cellular Therapies

Iris Isufi MD & Lohith Gowda, MD, MRCP

[Learn More](#)

Yale Cancer Answers

April 3; 7:30 PM

NPR

Radiation Oncology in the Care of GI Malignancies

Kevin Du, MD, PhD, MSCI

[Learn More](#)

Yale Cancer Center Special Seminar

April 4; 10:00 AM

Uncovering the Determinants of Effective Anti-tumor Immunity in Renal Cell Carcinoma

David A. Braun, MD, PhD

[Learn More](#)

Epigenetics Interest Group Seminar

April 4; 12:00 PM

Recruitment of Epigenetic Modifiers by Pivi/piRNA Pathway Components

Nils Neuenkirchen, PhD

[Learn More](#)

Yale Pharmacology Special Seminar

April 4; 12:30 PM

Signaling Rhythms that Coordinate Metabolism, Growth and Inflammation in Single Cells

John Albeck, PhD

[Learn More](#)

Addressing Women/URM Workforce Disparities on the National Level

April 5; 11:00 AM

Marcella Nunez-Smith, MD, MHS and Dean Nancy J. Brown, MD

[Learn More](#)

Human and Translational Immunology Seminar Series

April 5; 4:00 PM

(001)

The goals of this FOA are to implement and rigorously evaluate SARS-CoV-2 rapid testing strategies in communities experiencing COVID-19 health disparities. These two-year Rapid Testing Research Projects will evaluate (1) rapid testing interventions to prevent and control COVID-19 transmission among underserved and vulnerable populations and (2) partnership-driven research to implement and evaluate rapid testing and reduce COVID-19 disparities. The funding for this program is provided from the American Rescue Plan Act of 2021, PL 117-2.

Application Deadline: May 2, 2022

Read More

Hyundai Hope On Wheels Grants

Hyundai Hope On Wheels creates awareness for pediatric cancers and awards large grants to doctors and premiere research centers for life-saving research.

- The Scholar Hope Grant: presented to researchers involved with translational research, working directly with patients.
- The Hyundai Young Investigator's Grant: provides funding for principal investigators whose research projects are likely to have a significant impact on improving the understanding of the biology of childhood cancer.

Application Deadlines May 6, 2022

Read More

ALSF Grant Opportunities

- **NEW! R Accelerated Grant:** This grant provides funding to scientists within their first 10 years of faculty appointment who are focused on research in pediatric oncology that support ALSF's mission to find cures and better treatments for childhood cancers. **Deadline for Submission:** May 12, 2022
- **'A' Award Grant:** ALSF seeks game-changing proposals to substantially advance childhood cancer treatments and cures. The 'A' Award is designed for the early independent career scientist who wants to establish a career in pediatric oncology research and does not have NIH funding. **Deadline for Submission:** May 12, 2022

Read More

Pew-Stewart Scholars for Cancer Research

The Pew-Stewart Scholars for Cancer Research supports assistant professors of outstanding promise in science relevant to the advancement of a cure for cancer. The award provides \$300,000 in flexible support—\$75,000 per year for a four-year period.

Institutional Nomination Due: May 18, 2022

Read More

TheoryLab Collaborative Grants

The ACS is accepting Idea Abstracts through May 20 for TheoryLab Collaborative (TLC) Grants, which provide pilot grant support for innovative, collaborative research projects utilizing the ACS TheoryLab platform.

Contact: Research.Integration@cancer.org with questions.

Abstract Deadline: May 20, 2022

Read More

AACR Clinical Oncology Research Fellows Grants

The AACR Clinical Oncology Research (CORE) Training Fellowships Program is designed to provide an effective industry-academic clinical practicum with a unique training opportunity to develop academic clinicians in

April 5; 4:00 PM

Therapeutic Targeting of Self-reactive B-cells and Antibodies in Neurologic Disease

Kevin O'Connor, PhD

Learn More

Yale Liver Center Research Seminar

April 5; 5:00 PM

Changing Epidemiology of Hepatocellular Cancer

Fasiha Kanwal, MD, MSHS

Learn More

Special Seminar

April 6; 10:00 AM

Stem Cell Heterogeneity and Transcriptional Plasticity in Normal and Malignant Hematopoiesis

Ulrich Steidl, MD, PhD

Learn More

CBDS Distinguished Speaker Seminar Series

April 6; 4:00 PM

The Human Genome and Our Genes: How Much Are We Missing?

Steven Salzberg, PhD

Learn More

Neuroendocrine Conference

April 6; 4:00 PM

Neuro-ophthalmology of Pituitary Disease

Anitha Kohli, MD

Learn More

Pathology Grand Rounds

April 7; 12:30 PM

Discovering a Monoblast Marker

Mina Xu, MD

Learn More

Cancer Genetics and Prevention Seminar

April 7; 2:30 PM

Learn More

Center for GI Cancers Weekly Seminar

April 7; 4:15 PM

ASCO GI Review

Pamela Kunz, MD | Laura Baum, MD |

Michael Cecchini, MD | Jeremy Kortmansky,

MD | Jill Lacy, MD | Stacey Stein, MD

Learn More

Smilow Cancer Hospital and Yale Cancer Center Clinical and Research Town Hall

April 7; 5:00 PM

practicum with a unique training opportunity to develop academic clinicians in drug development.

- AACR Clinical Oncology Research (CORE) Training Fellowships
- AACR-AstraZeneca Clinical Immuno-oncology Research Training Fellowships
- AACR-Bayer Clinical Oncology Research Training Fellowships
- AACR-Johnson & Johnson Lung Cancer Initiative Clinical Oncology Research Training Fellowship

Application Deadline: May 31, 2022

[Read More](#)

Systematic Testing of Radionuclides in Preclinical Experiments (STRIFE) (R01, R21)

The purpose of this FOA is to solicit R01 and R21 research projects utilizing state-of-the-art cancer biology methods and model systems to study effects of different types of radiation used in radionuclide-based therapeutics (e.g., radiopharmaceutical therapy) on normal tissue, tumor cells and the tumor microenvironment.

Application Deadline: June 5, 2022

[Read More](#)

Epidemiologic Research on Emerging Risk Factors and Liver Cancer Susceptibility (R01 and R21)

The purpose of these FOAs is to promote epidemiologic research investigating novel and innovative hypotheses on emerging risk factors (biological, environmental, and social) and their interplay with established risk factors (e.g., viral hepatitis) associated with the development of liver cancer (hepatocellular carcinoma and other histological subtypes) in the United States.

Application Deadline: June 16, 2022

[Read More](#)

Lasker Clinical Research Scholars Program (Si2/R00)

This program offers the opportunity for a unique bridge between the NIH intramural and extramural research communities and contains two phases. In the first phase, Lasker Scholars will receive appointments for up to 5-7 years as tenure-track investigators within the NIH Intramural Research Program with independent research budgets. In the second phase, successful scholars will receive up to 3 years of NIH support for their research at an extramural research facility; or, the Scholar can be considered to remain as an investigator within the intramural program.

Application Deadline: June 24, 2022

[Read More](#)

Cancer Tissue Engineering Collaborative: Enabling Biomimetic Tissue-Engineered Technologies for Cancer Research (R01)

This FOA will support the development and characterization of state-of-the-art biomimetic tissue-engineered technologies for cancer research.

Application Deadline: July 5, 2022

[Read More](#)

Microbial-based Cancer Imaging and Therapy - Bugs as Drugs (R01/R21)

This FOA solicits grant applications proposing to utilize bacteria, archaeobacteria, bacteriophages, or other non-oncolytic viruses and their natural products to study the underlying mechanisms of the complex interactions between microorganisms, tumors, and the immune system, and to develop their clinical potential for cancer diagnosis and therapy.

April 7; 5:00 PM

Eric P. Winer, MD | Kevin Billingsley, MD, MBA | Kim Slusser, RN, BSN | Ian Krop, MD, PhD | Tara Sanft, MD | Alfred I. Lee, MD, PhD

[Learn More](#)

Yale Cancer Answers

April 10; 7:30 PM

NPR

Care of Gynecologic Cancers

Christi Kim, MD

[Learn More](#)

MB&B Seminar/The Joseph Coleman Memorial Lecture

April 11; 4:00 PM

Divergent Roles of Dicer's Helicase Domain in Antiviral Defense

Brenda Bass, PhD

[Learn More](#)

Schwartz Center Rounds

April 12; 12:00 PM

21st Century Cures Act and Its Impact on Our Patients and Providers

Christin Knowlton, MD

[Learn More](#)

Yale Cancer Biology Institute/Center of Molecular and Cellular Oncology Seminar

April 12; 1:00 PM

Reprogramming Tumor Immunity: Epigenomic Approaches to Dissect T Cell Exhaustion

Debattama Sen, PhD

[Learn More](#)

Human and Translational Immunology Seminar Series

April 12; 4:00 PM

Maturation of Human B cell Response to SARS-CoV-2 Vaccination

Ali Ellebedy, PhD

[Learn More](#)

Neuroendocrine Conference

April 13; 4:00 PM

Evaluation of the Infertile Couple

Eric Han, MD

[Learn More](#)

Bereavement Seminar

April 13; 5:30 PM

Understanding and Managing Grief: How to Support Your Family Through This Time

to explore their clinical potential for cancer imaging, therapeutics or diagnostics.

Application Deadline: July 5, 2022

Read More

Cancer Control Research in Persistent Poverty Areas (U54)

Through this FOA, the NCI invites applications for Cancer Control Research in Persistent Poverty Areas (Persistent Poverty Initiative). The goal is to provide resources to support the time and effort of transdisciplinary teams, in collaboration with institutions, clinics, and communities/tribes, to develop a cancer prevention and control research program and provide support to early-career investigators that focuses on and serves populations living in persistent poverty areas.

Application Deadline: July 6, 2022

Read More

Tobacco Centers of Regulatory Science (TCORS) for Research Relevant to the Family Smoking Prevention and Tobacco Control Act (U54)

The purpose of this FOA is to invite applications for TCORS to support biomedical and behavioral research that will provide scientific data to inform regulation of tobacco products to protect public health. Research Projects must address the Research Objectives related to the regulatory authority of the FDA Center for Tobacco Products.

Application Deadline: July 14, 2022

Read More

Long Am I Going to Feel Like This?

Learn More

Smilow Shares

April 13; 7:00 PM

Head & Neck Cancers: New Treatment Advances and Patient Care

Aarti Bhatia, MD, MPH | Avanti Verma, MD | David Zirlen

Learn More

Cancer Genetics and Prevention Seminar

April 14; 2:30 PM

Living with Biallelic Hereditary Cancer Conditions: Advancements in Treatment for Fanconi Anemia and Constitutional

Mismatch Repair Deficiency
Brooke Delehoy, MSW, CGC

Learn More

Center for GI Cancers Weekly Seminar/Journal Club

April 14; 4:15 PM

Caroline Gordon, MD

Learn More

Smilow Cares: Nourishing Your Mind, Body & Spirit

April 14; 6:00 PM

Nutrition for Cancer Survivorship

Learn More

Share your news!

Please submit your recent publications, awards, and grant announcements to:

Renee Gaudette

Director, Public Affairs and Communications