

February 17, 2023

Dear Colleagues:

We are all deeply saddened by the death of Roy Decker, MD, PhD, a Professor of Therapeutic Radiology. Roy was a giant in his field, and an invaluable member of the Yale Cancer Center Community. Sadly, I never came to know Roy, but I have heard from countless colleagues about his intellect, kindness, and generosity, as well as his devotion to his patients and colleagues. Our thoughts are with his family and friends.

Life slowly seems to be coming back to a new normal after three years of the pandemic. More of you are spending time on campus, and in the clinics and inpatient units; our research programs are all functioning more smoothly. That said, many are still recovering from the trauma of the last 36 months, and normal will not look the same. We have learned how to leverage virtual meetings, virtual patients visits, and the efficiencies of not having to do EVERYTHING in person. In the months ahead, we will continue the recovery, but will do so with deliberation and will carefully consider how best to use Zoom and other platforms to maximize our efficiency and our ability to maintain a healthy balance between work and the rest of our lives.

This is also the season for voting through Doximity to identify the best hospitals, and for us, the best cancer programs. In the days ahead, all of you who are eligible to vote will receive instructions on how to cast your ballots. I hope that the vast majority of you will identify Yale/Smilow as a top program, and that your votes will help us continue to improve our rankings.

Now that I have been at Yale for a year, I continue to say that all of you are what make my work here so great. Your efforts, energy, and accomplishments continue to amaze me. Moreover, our ability to work as a cohesive and congenial team is very special. Have a wonderful weekend and although we may still have a little cold weather ahead, spring is clearly coming. Crocuses are blooming in my backyard, and there have already been days when it has felt like April is upon us.

Eric

Announcements

In Memoriam: Roy H. Decker, MD, PhD

Eric P. Winer, MD

Director, Yale Cancer Center

Physician-in-Chief, Smilow Cancer Network

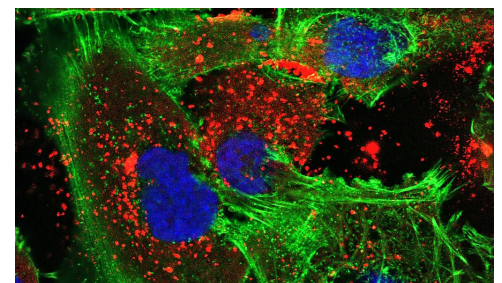
Yale
NewHaven
Health
Smilow Cancer
Hospital

Yale CANCER CENTER
A Comprehensive Cancer Center Designated
by the National Cancer Institute

News Center



**New Brain Cancer Treatment is a
'Marriage of Two Technologies'**



[Read More](#)

Targeted Drug Tagrisso Could Be

We are deeply saddened to share that Roy H. Decker, MD, PhD, Professor of Therapeutic Radiology, passed away on February 12, 2023. A member of the Yale Cancer Center and Smilow Cancer Hospital community for twenty years, he was widely recognized as a leader in the field of radiation oncology, a dedicated and compassionate clinician and clinical researcher, and an outstanding educator and mentor.



Dr. Decker joined the faculty of the Department of Therapeutic Radiology as an Assistant Professor in 2007 after completing his residency at Yale New Haven Hospital. He rapidly rose through the faculty ranks, becoming Professor in 2016. Dr. Decker held several important leadership positions in the Department of Therapeutic Radiology, serving as director of the residency program from 2013-2021, as the founding leader of the Therapeutic Radiology disease-aligned research team, and as vice chair for clinical research from 2010-2022. He also provided critical leadership to Yale Cancer Center as Director of the Clinical Trials Office from 2020-2021.

Dr. Decker was the recipient of numerous awards and accolades during his career in recognition of his academic contributions and his leadership in the field, including the Yale Cancer Center Award for Clinical Excellence in 2011. He was an international expert in lung cancer and chair of the SWOG Radiation Oncology committee where he led multidisciplinary clinical trial efforts. An early pioneer of stereotactic body radiation therapy, Dr. Decker helped to advance this new treatment paradigm for patients with lung cancer. He was also an outstanding educator, mentoring many medical students, residents, and junior faculty over the years, and was twice awarded the Educator of the Year Award from the Association of Residents in Radiation Oncology. He was truly a superb colleague who led by example throughout his career.

Dr. Decker is survived by his wife Elizabeth and his daughters Fay, Bridget, and Julia. A Celebration of Life will be planned in the coming months for colleagues and friends.

Wear Blue for Colorectal Cancer Awareness

Colorectal cancer is the third most common cancer in the U.S. and the second leading cause of death from cancers that affect both men and women. Colorectal cancer affects people in all racial and ethnic groups and is most common in people age 45 and older. Please help us raise awareness for colorectal cancer screening by **Wearing Blue on Friday, March 3.**

Post-ASH CME Series

Join Yale Hematology for a CME webinar series highlighting advances presented at ASH and clinical and translational research from Yale Cancer Center and Smilow Cancer Hospital on Fridays at noon. [Register to attend.](#)

February 17 - Classical Hematology

February 24 - Myeloid Malignancies

Targeted Drug Response Could Be

Advance Against Lung Cancer



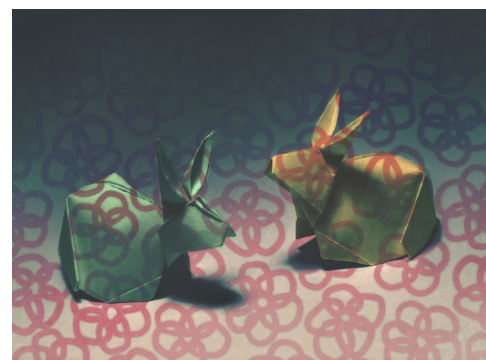
[Read More](#)

Health Headlines: How your age affects healthcare screenings



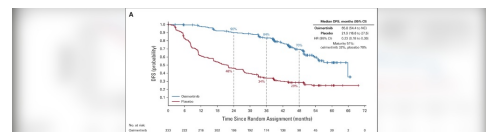
[Watch Now](#)

Longing and Fear: How Ovarian Cancer Changed My Perspective on Womanhood



[Read More](#)

Trial Shows Significant Disease-free Survival for Patients Diagnosed With Non-small Cell Lung Cancer



Notables

Jeremy Kortmansky, MD, Associate Professor of Clinical Medicine (Medical Oncology) and a member of Yale Cancer Center's Developmental Therapeutics Research Program, has been appointed **Clinical Director for the Division of GI Medical Oncology**, effective February 15, 2023. In this role, Dr. Kortmansky will support clinical operations, strategic growth, and physician integration into the new Division of GI Medical Oncology at Yale Cancer Center/Smilow Cancer Hospital. He will also serve as a key liaison for multidisciplinary initiatives in GI Oncology. In addition to this new role, Dr. Kortmansky will continue his work as Chief Network Officer for Smilow Cancer Hospital.

Giulia Biancon, PhD, a postdoctoral associate in the laboratory of **Stephanie Halene, MD, PhD**, has been awarded a **2023 Scholar Award** in the Basic/Translational Fellow category from the **American Society of Hematology**. The scholar award provides \$100,000 to further her research on the role of splicing factor mutations in myeloid malignancies.

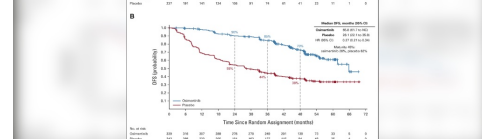
Jason Sheltzer, PhD, Assistant Professor of Surgery (Oncology) and Genetics and a member of Yale Cancer Center's Genomics, Genetics, and Epigenetics Research Program, has been awarded a **Discovery Award** by the **Mark Foundation for Cancer Research** to support his project, *Developing CDK11 Inhibition as a Novel Anti-Cancer Strategy*. Dr. Sheltzer's research is in collaboration with Jane Endicott, PhD, at Newcastle University. Drug Discovery Awards provide resources for projects with the ultimate goal of bringing new drug candidates to the clinic.

Michael Girardi, MD, Evans Professor of Dermatology, co-director of the Dermatology Research Fellowship Program, and a member of Yale Cancer Center's Cancer Immunology Research Program, has been elected to the **Association of American Physicians (AAP)**. Dr. Girardi's research focuses on the correlation between immune regulation and skin cancer development. Most recently, he developed a novel drug delivery system using bioadhesive and nanoparticles to improve the local delivery of treatment.

Ian Krop, MD, PhD, has been appointed **Professor of Medicine (Medical Oncology)**. Dr. Krop joined Yale Cancer Center in March 2022 and also serves as Associate Cancer Center Director for Clinical Research, Director of the Clinical Trials Office, and Chief Clinical Research Officer at Yale Cancer Center and Smilow Cancer Hospital.

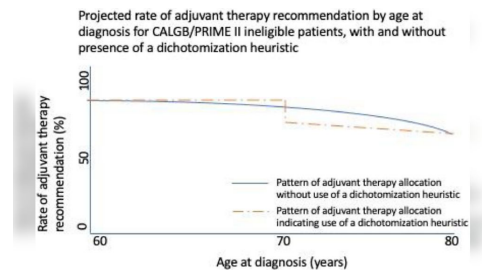
Asher Marks, MD, Associate Professor of Pediatrics (Hematology/Oncology) and a member of Yale Cancer Center's Cancer Prevention and Control Research Program, has received a **Health 2.0 Conference Leadership Award**. He is recognized for his continued dedication to advancing XR (extended reality) applications in medicine.

David Braun, MD, PhD, Assistant Professor of Medicine (Medical Oncology), Louis Goodman and Alfred Gilman Yale Scholar, and a member of Yale Cancer Center's Cancer Immunology Research Program, has been



[Read More](#)

Study Finds Large Gap in Breast Cancer Treatment Recommendations for Patients Aged 70 vs 69



[Read More](#)

Follow us!

facebook



YouTube

Instagram

LinkedIn

awarded an **American Society for Clinical Investigation (ASCI) Young Physician-Scientist Award**. Dr. Braun will attend the AAP/ASCI/APSA Joint Meeting in April.

Varun Bansal, MBBS, Postdoctoral Fellow in Surgery, has received a **Travel Award** from the Society of Surgical Oncology and the Appendix Cancer Pseudomyxoma Peritonei Research Foundation in recognition of his outstanding abstract at the **Advanced Cancer Therapies** meeting earlier this week.

The **National Cancer Institute Epidemiology and Genomics Research Program (EGRP)** has selected a manuscript led by **Caroline Johnson, PhD**, Associate Professor of Epidemiology (Environmental Health Sciences) and a member of Yale Cancer Center's Cancer Prevention and Control Research Program, and colleagues at Yale, to be included in **EGRP's Research Highlights for 2022**. Their manuscript, ***Bile acid distributions, sex-specificity, and prognosis in colorectal cancer***, will be included in the highlight publication.

Our **Pediatric Bone Marrow Transplant** team attended the **American Society for Transplantation and Cellular Therapy** meeting in Orlando to present posters on sickle cell disease transplant. Team members include, **Dr. Rohaum Hamidi**, pediatric resident; **Zili (Hugo) He**, **Yanhong Deng**, **Dr. Aron Flagg**, **Dr. Niketa C. Shah**, and **Dr. Lakshmanan Krishnamurti**.

The **ASCO Genitourinary Cancers Symposium** is happening now in San Francisco and features presentations from several Yale Cancer Center members, including:

Michael Leapman, MD, MHS

- Patient experiences with tissue-based genomic testing during active surveillance for prostate cancer
- Association between sociodemographic factors and diagnosis of advanced prostate cancer in early life
- Associations between patient sociodemographic factors and non-treatment for localized prostate cancer
- "It just makes sense to me:" Patient experiences with prostate MRI during prostate cancer active surveillance

Daniel P. Petrylak, MD

- Patient-reported outcomes (PROs) in KEYNOTE-921: Pembrolizumab (pembro) plus docetaxel for patients (pts) with metastatic castration-resistant prostate cancer (mCRPC)
- Pembrolizumab plus docetaxel for patients with metastatic castration-resistant prostate cancer (mCRPC): Randomized, double-blind, phase 3 KEYNOTE-921 study
- Primary analysis of TROPHY-U-01 cohort 2, a phase 2 study of sacituzumab govitecan (SG) in platinum (PT)-ineligible patients (pts) with metastatic urothelial cancer (mUC) that progressed after prior checkpoint inhibitor (CPI) therapy
- A phase 2 expansion study of ARV-766, a PROTAC androgen receptor (AR) degrader, in metastatic castration-resistant prostate cancer (mCRPC)

David Braun, MD, PhD

- Examination of resistance to nivolumab monotherapy through single-cell analysis of tumors from patients enrolled in the HCRN GU16-260 study of nivolumab monotherapy

Nazli Dizman, MD

- Association between time of day of the immune checkpoint inhibitor

The American Brain Tumor Association is hosting a free webinar for patients and families on Saturday, March 4 at 11:00am EST: **Adult Low Grade Gliomas: Treatment, Symptom Management, and New Research**. The event will be chaired by Elizabeth Claus, PhD, MD, Professor of Biostatistics and Director of Medical Research at Yale School of Public Health.



American Brain Tumor Association™

PATIENT & FAMILY MEETINGS

Register now for a free webinar

Saturday, March 4, 2023 at 11:00am EST

Adult Low Grade Gliomas: Treatment, Symptom Management, and New Research

Chaired by Elizabeth Claus, PhD, MD

YaleNewHavenHealth
Smilow Cancer Hospital

Yale CANCER CENTER
A Comprehensive Cancer Center Designated by the National Cancer Institute

[Read More](#)

"The contribution of sociodemographic factors, unequal access to care, and the limitations of our nation's healthcare system play a major role in cancer care disparities. At Yale Cancer Center, we are totally committed to diminishing cancer care disparities," Eric Winer, MD, Director, Yale Cancer Center, and Physician-in-Chief, Smilow Cancer Network.

On World Cancer Day, we are committed to closing the care gap in cancer care. As part of the National Comprehensive Cancer Network, we join organizations worldwide to draw attention to inequities in cancer care everywhere. By raising worldwide awareness, we are all working together to reimagine a world where millions of preventable cancer deaths are saved and access to life-saving cancer treatment and care is equitable for all - no matter who you are or where you live.

World Cancer Day

"The contribution of sociodemographic factors, unequal access to care, and the limitations of our nation's healthcare system play a major role in cancer care disparities. At Yale Cancer Center, we are totally committed to diminishing cancer care



- Association between time-of-day of the immune checkpoint inhibitor (ICI) infusion and disease outcomes among patients with metastatic renal cell carcinoma (mRCC)

Ryan Chow and Michaela Dinan, PhD

- Evolution of systemic therapy from 2015 to 2019 for older patients in the United States with metastatic renal cell carcinoma

Veda Giri, MD

- Factors related to men’s experience with prostate cancer germline testing

DEI Update

BioLaunch Collaboration Provides Training for Community

BioLaunch is a new program to develop the New Haven workforce to support the growth of the biotech industry, a sector that is rapidly growing in the region. In partnership with the Connecticut Center for Arts and Technology (ConnCAT) and spearheaded by Craig Crews, PhD, John C. Malone Professor of Molecular, Cellular, and Developmental Biology and Professor of Chemistry, of Pharmacology, and of Management, and a member of Yale Cancer Center, BioLaunch is a state-funded partnership of local biotech companies. The group hopes to develop a local workforce and create local, well-paying technical jobs that do not require a college degree or other out-of-pocket training costs.

Two cohorts, one in the spring and another in the fall, are targeting 18-26-year-old non-college bound candidates. Each cohort will accept 15 candidates for a 4-month training program, which is expected to end with a paid industrial internship with local biopharma labs. Each trainee will receive a monthly stipend and more than \$230k has been allocated for support services such as childcare and transportation for the candidates.

[Learn More](#)

Applications open: Diversity Enhancement Program

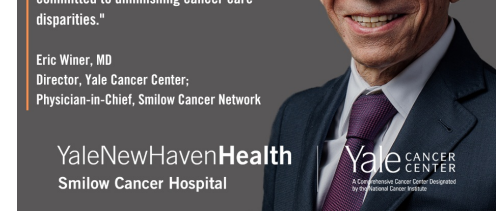
The Diversity Enhancement Program in Oncology is an initiative established by the Section of Medical Oncology at Yale Cancer Center. The Program is designed to foster underrepresented in medicine (URiM) trainees’ interest in careers in hematology/medical oncology and to build a pipeline to bring URiM candidates to the Yale Cancer Center Hematology/Oncology Fellowship Program and YCC-Advanced T32 Training Program for Physician-Scientists.

The program supports 2 URiM medical students or residents to spend an 8-week oncology rotation at Yale during the summer of 2023. The rotation will include an oncology clinical experience in conjunction with a clinical or translational research project. The selected medical student(s) or resident(s) will be mentored by YCC faculty and co-mentored by Heme/Onc T32 Fellows.

The Section of Medical Oncology at YCC will cover the expenses including living, transportation, and research for up to \$5000 per person.

Eligibility:

- MD (or equivalent) student, MD/PhD student, or currently in clinical training as a resident
- **Underrepresented in medicine**
- Hold U.S. citizenship or permanent residency
- Strong commitment to a career in cancer research



[Read More](#)

Today, we’d like to introduce you to Christy, a survivor of uterine cancer. “Soon after discovering I had uterine cancer, I had the good fortune to be introduced to Dr. Elena Ratner, and she ordered a CT scan which revealed I had two more tumors. As devastating as this was, I felt like I was in excellent hands. I was sent for genetic testing, which revealed that I have Lynch Syndrome.

Lynch Syndrome is a mismatched repair gene mutation, putting me at higher risk for certain cancers. I feel very fortunate to have this information as I know exactly what cancers I’m being watched for, and I am diligent about going for all of my yearly tests. In November 2021, I hit the six-year cancer free mark!

Like I say to everyone who is on a similar journey, “just keep swimming.”



[Read More](#)

We congratulate Sanjay Aneja, MD, PhD,

who has been appointed Assistant Cancer Center Director for Bioinformatics. Dr. Aneja’s own research investigates the application of machine learning techniques in clinical oncology, including using deep learning to derive biomarkers of cancer outcomes and clinical trial classification. Dr. Aneja will work closely with the new Center

Due date for full applications: Monday, March 27, 2023 at 5:00pm. Please reach out to **Roy S. Herbst, MD, PhD**; **Alfred Lee, MD, PhD**; or **Meina Wang, PhD** for more information and application instructions.

Employee Profile: Dominique Mills

Dominique Mills, New Patient Onboarding Associate at the Smilow Cancer Hospital Care Center in Derby, spends much of her day on the phone scheduling patients for their first consult with a physician. This entails making sure all patients have the appropriate tests and scans done, working with insurance companies, and answering general questions patients and family members may have ahead of their appointment, while also starting to form the foundation for an ongoing relationship.



Although in her ninth year in this role, Dominique previously worked in the department of radiology at Griffin Hospital and has kept many of her working relationships with staff in various departments, which helps ensure collaboration. This background and experience in the field has also made her an asset when it comes to knowing who to connect with for various things. She prides herself on having an open door with patients, wanting to make sure they are comfortable and feel like they can share what is going on in their life that may make scheduling difficult.

“I like to find out preferences for appointments and do my best to work with them and their physician to accommodate,” said Dominique. “I want a new patient to just have to show up and not worry about anything else. I let them know that I am here for them and will do my best to help in any way that I can.”

Dominique also tries to make herself available the day of a patient’s first appointment so that they can put a face to the voice on the phone and continue their relationship. Susan Hanrahan, BSN, RN, OCN, CHPN, Oncology Nurse Coordinator, commented, “Dominique’s attention to detail is

remarkable. She makes a connection with patients, and they look forward to seeing her each time they come to the office. Her role recently changed to being part of the New Patient Onboarding Team. As such, she is the first contact with the patient, and we could not have a more positive, kind, thorough first impression. She is indeed an asset, to this office in particular, and to Smilow as a whole.”

Recent Publications

for Biomedical Informatics and Data Science at Yale School of Medicine.



[Read More](#)

Recently on Yale Cancer Answers, breast medical oncologist Dr. Mariya Rozenblit and Katherine Kraschel from Yale Law School, discussed the concerns and questions that arise with the care of a pregnant patient with cancer. Listen on Connecticut Public Radio or download our podcast from iTunes.



[Read More](#)

February is National Cancer Prevention Month and we invite you to learn more by registering to join our webinar on Thursday, February 23 at 7pm on the topic of “Understanding Your Risk and Cancer Prevention.” Claire Healy, MS, CGC, Certified Genetic Counselor, will moderate, with discussion and presentations from Veda Giri, MD, Chief of Clinical Cancer Genetics at

Goldberg, S., Herbst, R. S.

The end of the beginning: progress and next steps in KRAS-mutant non-small-cell lung cancer

Lancet, February 9, 2023.

[Read More](#)

Langdon, J., Gupta, A., Sharbidre, K., Czeyda-Pommersheim, F., & Revzin, M.

Thyroid cancer in pregnancy: diagnosis, management, and treatment.

Abdominal radiology (New York), 10.1007/s00261-023-03808-1.

[Read More](#)

Ngwube, A., Rangarajan H., Shah N.

Role of abatacept in the prevention of graft-versus-host disease: current perspectives

Ther Adv Hematol, 2023, Vol. 12: 1-13

[Read More](#)

Czeyda-Pommersheim, F., Kluger, H., Langdon, J., Menias, C., VanBuren, W., Leventhal, J., Baumann, R., Jr, & Revzin, M.

Melanoma in pregnancy.

Abdominal radiology (New York), 10.1007/s00261-022-03796-8.

[Read More](#)

Harrington, K. J., Burtness, B., Greil, R., Soulières, D., Tahara, M., de Castro, G., Jr, Psyri, A., Brana, I., Basté, N., Neupane, P., Bratland, Å., Fuereder, T., Hughes, B. G. M., Mesia, R., Ngamphaiboon, N., Rordorf, T., Wan Ishak, W. Z., Lin, J., Gumuscu, B., Swaby, R. F., ... Rischin, D.

Pembrolizumab With or Without Chemotherapy in Recurrent or Metastatic Head and Neck Squamous Cell Carcinoma: Updated Results of the Phase III KEYNOTE-048 Study.

Journal of clinical oncology : official journal of the American Society of Clinical Oncology, 41(4), 790–802.

[Read More](#)

Aklilu, A., & Shirali, A. C.

Chemotherapy-Associated Thrombotic Microangiopathy.

Kidney360, 10.34067/KID.0000000000000061.

[Read More](#)

Chow, R. D., Michaels, T., Bellone, S., Hartwich, T. M. P., Bonazzoli, E., Iwasaki, A., Song, E., & Santin, A. D.

Distinct Mechanisms of Mismatch-Repair Deficiency Delineate Two Modes of Response to Anti-PD-1 Immunotherapy in Endometrial Carcinoma.

Cancer discovery, 13(2), 312–331.

[Read More](#)

Mayo, Z. S., Campbell, S. R., Shah, C. S., Weleff, J., & Kilic, S. S.

Improving Treatment Interventions and Cancer Outcomes in Persons Experiencing Homelessness: A Population Underrepresented in Equity

Initiatives.

International journal of radiation oncology, biology, physics, 115(2), 302–304.

[Read More](#)

Liu, R., Ospanova, S., & Perry, R. J.

The impact of variance in carnitine palmitoyltransferase-1 expression on breast cancer prognosis is stratified by clinical and anthropometric factors.

PLoS one, 18(2), e0281252.

[Read More](#)

Snider, N. G., Hastert, T. A., Nair, M., Kc, M., Ruterbusch, J. J., Schwartz, A. G., Peters, E. S., Stoffel, E. M., Rozek, L. S., & Purrington, K. S.

Area-level Socioeconomic Disadvantage and Cancer Survival in

Smilow Cancer Hospital, and Tanaya Schroff, MS, CGC, Certified Genetic Counselor.

Featured topics include factors associated with cancer risk, an overview of hereditary cancer genetics and of hereditary cancer focused germline genetic testing, and how genetic testing outcomes can impact cancer prevention.

Smilow Shares

Understanding Your Cancer Risk and Prevention

Thursday, February 23 at 7:00pm
[Register on Zoom](#)

Moderated by Claire Healy, MS, CGC
Featuring presentations from:

Veda Giri, MD
Chief, Clinical Cancer Genetics

Tanaya Shroff, MS, CGC
Certified Genetic Counselor

YaleNewHavenHealth
Smilow Cancer Hospital

Yale CANCER CENTER
A Comprehensive Cancer Center Designated by the National Cancer Institute

[Read More](#)

Meet Tara Sanft, MD, a medical oncologist at Smilow Cancer Hospital. Dr. Sanft is also our Chief Patient Experience Officer and she serves as the Director of Smilow Cancer Hospital's Survivorship Clinic, one of the nation's first multidisciplinary clinics specializing in cancer survivorship.

A recent patient of Dr. Sanft shared the following, "This was my first visit to the cancer survivorship clinic. The care and concern that Dr. Sanft showed was above and beyond my expectations. This is an excellent program that I feel fortunate to have access to."



Area-level Socioeconomic Disadvantage and Cancer Survival in Metropolitan Detroit.

Cancer epidemiology, biomarkers & prevention : a publication of the American Association for Cancer Research, cosponsored by the American Society of Preventive Oncology, OF1–OF11.

[Read More](#)

Basappa, S. N., Finney Rutten, L. J., Hruska, C. B., Olson, J. E., Jacobson, D. J., & Rhodes, D. J.

Breast Cancer Mode of Detection in a Population-Based Cohort.

Mayo Clinic proceedings, 98(2), 278–289.

[Read More](#)

Sarkar, E., Chielle, E., Gursoy, G., Chen, L., Gerstein, M., & Maniatakos, M.

Privacy-preserving cancer type prediction with homomorphic encryption.

Scientific reports, 13(1), 1661.

[Read More](#)

Dhanasopon A. P.

New molecular and immunologic targets of therapy for esophageal cancer and the prospects for ongoing and future clinical trials.

Journal of surgical oncology, 127(2), 239–243.

[Read More](#)

Dinan, M. A., Pitafi, S., Greenup, R. A., Long, J. B., & Gross, C. P.

Genetic testing in privately insured women with surgically treated breast cancer.

Breast cancer research and treatment, 198(1), 177–181.

[Read More](#)

Schulman-Green, D., Linsky, S., Blatt, L., Jeuland, J., Kapo, J., & Jeon, S.

Improving Breast Cancer Family Caregivers' Palliative Care Literacy: A Pilot Randomized Trial.

Journal of family nursing, 29(1), 99–114.

[Read More](#)

Udelsman, B. V., & Blasberg, J. D.

Using the robotic platform in the therapy of multifocal ground glass opacities.

Journal of surgical oncology, 127(2), 262–268.

[Read More](#)

Miller, T. R., Johnson, M. B., Dziura, J. D., Weiss, J., Carpenter, K. M., Grau, L. E., Pantalon, M. V., Abroms, L., Collins, L. M., Toll, B. A., & Bernstein, S. L.

Cost-Effectiveness of Smoking-Cessation Approaches in Emergency Departments.

American journal of preventive medicine, S0749-3797(23)00008-9.

[Read More](#)

Bowlus, C. L., Arrivé, L., Bergquist, A., Deneau, M., Forman, L., Ilyas, S. I., Lunsford, K. E., Martinez, M., Sapisochin, G., Shroff, R., Tabibian, J. H., & Assis, D. N.

AASLD practice guidance on primary sclerosing cholangitis and cholangiocarcinoma.

Hepatology (Baltimore, Md.), 77(2), 659–702.

[Read More](#)

Saeed, N. A., Jin, L., Amini, A., Verma, V., Lester-Coll, N. H., Chen, P. H., Decker, R. H., & Park, H. S.

Utilization and Survival Impact of Hypofractionated Radiotherapy in Stage I Non-small Cell Lung Cancer.

American journal of clinical oncology, 46(2), 66–72.

[Read More](#)

Branjal, G., Bishablab, K. J., Juan, B., Johnson, A. B., Price, G. S.



[Read More](#)

On Yale Cancer Answers, Dr. Donna Spiegelman discussed global health and cancer care around the world. Listen on Connecticut Public Radio or download our podcast from iTunes.

YALE CANCER ANSWERS

Global Health and Oncology

Donna Spiegelman, ScD
Susan Dwight Bliss Professor of Biostatistics;
Assistant Cancer Center Director, Global Oncology

Sunday, January 29 at 7:30pm
Listen live on WNPR or stream via ctpublic.org
Download our podcast on iTunes

YaleNewHavenHealth Smilow Cancer Hospital | Yale CANCER CENTER

[Learn More](#)

Meet Annette Hood, PharmD, BCACP, a clinical pharmacist specializing in women's oncology, including breast, ovarian, uterine, and cervical cancers, at Smilow Cancer Hospital. Annette loves being a pharmacist because of the ability to work closely with physicians and nurses on appropriate dosing, administration, and side effect management of medications, but also to talk face-to-face with patients to teach them how to properly take their medications and what to expect from side effects.

Staff Spotlight

Annette Hood, PharmD, BCACP
Clinical pharmacist specializing in Women's Oncology

YaleNewHavenHealth Smilow Cancer Hospital | Yale CANCER CENTER

[Learn More](#)

Brongel, S., Rychalsky, K. L., Luoh, D., Johnson, A. R., Price, C., & Abdelghany, O.

Management of Steroid-Refractory Gastrointestinal Immune-Related Adverse Events.

The Annals of pharmacotherapy, 57(2), 148–155.

Read More

Laditi, F., Nie, J., Hsiang, W., Umer, W., Haleem, A., Marks, V., Buck, M., & Leapman, M. S.

Access to urologic cancer care for Medicaid-insured patients.

Urologic oncology, S1078-1439(23)00013-3.

Read More

Gross, C. P., & Dusetzina, S. B.

Stemming Medicare Spending on Discarded Drugs-Waste Not, Want Not?.

JAMA internal medicine, 183(2), 93.

Read More

Jacobs, J. W., Binns, T. C., Abels, E., Iyer, K., Figueroa Villalba, C. A., Verma, A., Sostin, N., & Tormey, C. A.

Alloimmunization following antigen-negative red blood cell transfusion.

Transfusion, 63(2), 430–434.

Read More

Anandhan, A., Dodson, M., Shakya, A., Chen, J., Liu, P., Wei, Y., Tan, H., Wang, Q., Jiang, Z., Yang, K., Garcia, J. G., Chambers, S. K., Chapman, E., Ooi, A., Yang-Hartwich, Y., Stockwell, B. R., & Zhang, D. D.

NRF2 controls iron homeostasis and ferroptosis through HERC2 and VAMP8.

Science advances, 9(5), eade9585.

Read More

Ahmad, M., Saeed, S., Olamiju, B., Silber, A., & Leventhal, J.

Dermatologic toxicities of chemotherapy: an educational intervention for skin of color women with breast cancer.

International journal of women's dermatology, 9(1), e073.

Read More

Gisriel, S. D., Chen, P. H., Tormey, C. A., & Siddon, A. J.

Recognizing the microgranular variant of acute promyelocytic leukemia when considering leukapheresis.

Transfusion, 63(2), 277–278.

Read More

Zhang, I. Y., Hart, G. R., Qin, B., & Deng, J.

Long-term survival and second malignant tumor prediction in pediatric, adolescent, and young adult cancer survivors using Random Survival

Forests: a SEER analysis.

Scientific reports, 13(1), 1911.

Read More

Lustberg, M., Wu, X., Fernández-Martínez, J. L., de Andrés-Galiana, E. J., Philips, S., Leibowitz, J., Schneider, B., & Sonis, S.

Identification of a SNP cluster associated with taxane-induced peripheral neuropathy risk in patients being treated for breast cancer using GWAS data derived from a large cooperative group trial.

Supportive care in cancer : official journal of the Multinational Association of Supportive Care in Cancer, 31(2), 139.

Read More

Kim, J. W., McKay, R. R., Radke, M. R., Zhao, S., Taplin, M. E., Davis, N. B., Monk, P., Appleman, L. J., Lara, P. N., Jr, Vaishampayan, U. N., Zhang, J., Paul, A. K., Bublely, G., Van Allen, E. M., Unlu, S., Huang, Y., Loda, M., Shapiro, G. I., Glazer, P. M., LoRusso, P. M., ... Petrylak, D. P.



A [@Yale_Urology](#) study led by Dr. Preston Sprenkle [@dr_sprenkle](#)

explores tissue-based genomic tests for [#prostatecancer](#). While results show efficacy, for now the tests should only be part of the decision to treat or defer.



A new nanoparticle-based treatment that targets multiple culprits in [#glioblastoma](#) has been developed by research teams led by W. Mark Saltzman, PhD [@wmsaltzman](#) and [@UConn](#).



Daniel O'Neil, MD, MPH, has been named Assistant Clinical Professor of Medicine (Medical Oncology) and will care for patients with [#breastcancer](#) as part of the [@SmilowCancer](#) Care Center in Waterbury. Welcome, Dr. O'Neil!



Join our Post-ASH [ASH_hematology](#) [#CME](#) webinar series starting tomorrow, February 10 at 12pm. This week's webinar will feature presentations on [#MultipleMyeloma](#).



Michaela Dinan, PhD, Associate Professor of Epidemiology (Chronic Disease) and co-leader of our Cancer Prevention and Control Program, has been named Associate Editor of the Journal of the National Cancer Institute (JNCI) [@JNCI](#) Now.



Dr. Courtney Gibson [@YaleSurgery](#) discusses cutting-edge work being done in the management of [#thyroid](#) disease and what the future holds in terms of

[#radiofrequencyablation](#) and [#thyroidnodules](#). Watch her talk now at http://youtu.be/24hYq_HWmYA.



The Yale Cancer Center Award for Mentorship Excellence was presented to Xiaomei Ma, PhD [@YaleSPH](#). Dr. Ma received a record 13 nominations in recognition of her generosity, support, individualized attention, and humanity.



The American Brain Tumor Association [@theABTA](#) is hosting a free webinar on Adult Low Grade [#gliomas](#), chaired by Dr. Elizabeth Claus

Chaired by Dr. Elizabeth Claus.
Randomized Trial of Olaparib With or Without Cediranib for Metastatic Castration-Resistant Prostate Cancer: The Results From National Cancer Institute 9984.

Journal of clinical oncology : official journal of the American Society of Clinical Oncology, 41(4), 871–880.

[Read More](#)

Podany, P., Meiklejohn, K., Garritano, J., Holt, E. H., Barbieri, A., Prasad, M., & Gilani, S. M.

Grading system for medullary thyroid carcinoma; an institutional experience.

Annals of diagnostic pathology, 64, 152112.

[Read More](#)

Boyden, J. Y., Bogetz, J. F., Johnston, E. E., Thienprayoon, R., Williams, C. S. P., McNeil, M. J., Patneau, A., Widger, K. A., Rosenberg, A. R., & Ananth, P.

Measuring pediatric palliative care quality: Challenges and opportunities.

Journal of pain and symptom management, S0885-3924(23)00055-6.

[Read More](#)

Cable, J., Balachandran, S., Daley-Bauer, L. P., Rustagi, A., Antony, F., Frere, J. J., Strampe, J., Kedzierska, K., Cannon, J. L., McGargill, M. A., Weiskopf, D., Mettelman, R. C., Niessl, J., Thomas, P. G., Briney, B., Valkenburg, S. A., Bloom, J. D., Bjorkman, P. J., Iketani, S., Rappazzo, C. G., ... Schultz-Cherry, S.

Viral immunity: Basic mechanisms and therapeutic applications-a Keystone Symposia report.

Annals of the New York Academy of Sciences, 10.1111/nyas.14960.

[Read More](#)

Panse G.

Microsecretory adenocarcinoma: Cutaneous counterpart of a newly described salivary gland tumor with recurrent MEF2C::SS18 fusion.

Journal of cutaneous pathology, 50(2), 188–190.

[Read More](#)

Rodler, E., Sharma, P., Barlow, W. E., Gralow, J. R., Puhalla, S. L., Anders, C. K., Goldstein, L., Tripathy, D., Brown-Glaberman, U. A., Huynh, T. T., Szyarto, C. S., Godwin, A. K., Pathak, H. B., Swisher, E. M., Radke, M. R., Timms, K. M., Lew, D. L., Miao, J., Pusztai, L., Hayes, D. F., ... Hortobagyi, G. N.

Cisplatin with veliparib or placebo in metastatic triple-negative breast cancer and BRCA mutation-associated breast cancer (S1416): a randomised, double-blind, placebo-controlled, phase 2 trial.

The Lancet. Oncology, 24(2), 162–174.

[Read More](#)

Fischer, M. A., Song, Y., Arrate, M. P., Gbyli, R., Villaume, M. T., Smith, B. N., Childress, M. A., Stricker, T. P., Halene, S., & Savona, M. R.

Selective inhibition of MCL1 overcomes venetoclax resistance in a murine model of myelodysplastic syndromes.

Haematologica, 108(2), 522–531.

[Read More](#)

Talia, K. L., Banet, N., & Buza, N.

The role of HER2 as a therapeutic biomarker in gynaecological malignancy: potential for use beyond uterine serous carcinoma.

Pathology, 55(1), 8–18.

[Read More](#)

Adjei, N. N., Yung, N., Towers, G., Caty, M., Solomon, D., & Vash-Margita, A.

Establishing an Association between Polycystic Ovarian Syndrome and Pilonidal Disease in Adolescent Females.



Starting Friday, February 10 at Noon, we will host a 5-part Post-ASH CME webinar series, featuring topics related to #hematology.



We congratulate Sanjay Aneja, MD, PhD, @SanjayAnejaMD, named Assistant Cancer Center Director for #Bioinformatics. Dr. Aneja will work closely with the new Center for Biomedical Informatics and Data Science in [@YaleMed](#).



Join us in person today at 12pm or via Zoom for #GrandRounds presented by Dr. Courtney Gibson on the topic of "Radiofrequency ablation of thyroid nodules: current indications and future considerations."



Congratulations to Michael S. Leapman, MD, MHS, @mleapman & Sajid Khan, MD, FACS, FSSO, @sajkhanmd both recipients of the Yale Cancer Center Population Science Research Prize!



Tonight at 7:30pm on Yale Cancer Answers, join breast medical oncologist Dr. @MariyaRozenblit along with @KatieKraschel @YaleLawSch, as they discuss the concerns that arise during the care of a pregnant patient with cancer. Listen live on @wnpr or @iTunes.



Anne Chiang, MD, PhD, @Annechiangmd has been named Associate Cancer Center Director for Clinical Initiatives. Her experience leading engagement on behalf of the SmilowCancer Network will dovetail nicely w/ her new role. Congratulations, Dr. Chiang!

Calendar

Endocrinology Clinical Dilemma

February 17; 12:00 PM

BCMM 206/208

TBD

[Learn More](#)

Yale Cancer Center 2023 Post-ASH CME Series

Read More

Herbst, R. S., Wu, Y. L., John, T., Grohe, C., Majem, M., Wang, J., Kato, T., Goldman, J. W., Laktionov, K., Kim, S. W., Yu, C. J., Vu, H. V., Lu, S., Lee, K. Y., Mukhametshina, G., Akewanlop, C., de Marinis, F., Bonanno, L., Domine, M., Shepherd, F. A., ... Tsuboi, M.

Adjuvant Osimertinib for Resected EGFR-Mutated Stage IB-III A Non-Small-Cell Lung Cancer: Updated Results From the Phase III Randomized ADAURA Trial. J

Journal of clinical oncology : official journal of the American Society of Clinical Oncology, JCO2202186.

Read More

Zeidan, A. M., Borate, U., Pollyea, D. A., Brunner, A. M., Roncolato, F., Garcia, J. S., Filshie, R., Odenike, O., Watson, A. M., Krishnadasan, R., Bajel, A., Naqvi, K., Zha, J., Cheng, W. H., Zhou, Y., Hoffman, D., Harb, J. G., Potluri, J., & Garcia-Manero, G.

A phase 1b study of venetoclax and azacitidine combination in patients with relapsed or refractory myelodysplastic syndromes.

American journal of hematology, 98(2), 272–281.

Read More

Venugopal, S., Xie, Z., & Zeidan, A. M.

An overview of novel therapies in advanced clinical testing for acute myeloid leukemia.

Expert review of hematology, 10.1080/17474086.2023.2174521.

Read More

Zeidan, A. M., Platzbecker, U., Bewersdorf, J. P., Stahl, M., Adès, L., Borate, U., Bowen, D. T., Buckstein, R. J., Brunner, A. M., Carraway, H. E., Daver, N. G., Díez-Campelo, M., de Witte, T. M., DeZern, A. E., Efficace, F., Garcia-Manero, G., Garcia, J. S., Germing, U., Giagounidis, A., Griffiths, E. A., ... Fenaux, P.

Consensus proposal for revised International Working Group response criteria for higher risk myelodysplastic syndromes.

Blood. 2022018604.

Read More

Wang, J. D., Sebastian, C., Walther, Z., Suresh, T., Lacy, J., Zhang, X., & Jain, D.

An Appraisal of Immunohistochemical Stain Use in Hepatic Metastasis Highlights the Effectiveness of the Individualized, Case-Based Approach: Analysis of Data From a Tertiary Care Medical Center.

Archives of pathology & laboratory medicine, 147(2), 185–192.

Read More

Iseke, S., Zeevi, T., Kucukkaya, A. S., Raju, R., Gross, M., Haider, S. P., Petukhova-Greenstein, A., Kuhn, T. N., Lin, M., Nowak, M., Cooper, K., Thomas, E., Weber, M. A., Madoff, D. C., Staib, L., Batra, R., & Chapiro, J.

Machine Learning Models for Prediction of Posttreatment Recurrence in Early-Stage Hepatocellular Carcinoma Using Pretreatment Clinical and MRI Features: A Proof-of-Concept Study.

AJR. American journal of roentgenology, 220(2), 245–255.

Read More

Lee, J., Olayinka, O., & Thrul, J.

Association between pain and e-cigarette use stratified by cigarette smoking status: Results from National Health Interview Survey (NHIS) 2019-2020.

Addictive behaviors, 140, 107625.

Read More

Bernstein, S. L., Dziura, J., Weiss, J., Brooks, A. H., Miller, T., Vickerman, K. A., Grau, L. E., Pantaloni, M. V., Abroms, L., Collins, L. M., & Toll, B.

Successful Optimization of Tobacco Dependence Treatment in the

February 17; 12:00 PM

Robert Bona, MD | Alfred Lee, MD, PhD

Learn More

Yale Cancer Answers

February 19; 7:30 PM

Cancer Prevention in Low- and middle-income Countries

Raul U. Hernandez-Ramirez, PhD

Learn More

Yale Cardiovascular Medicine Grand Rounds

February 21; 8:00 AM

Carlos Fernandez-Hernando, PhD

Learn More

Yale Cancer Center Grand Rounds

February 21; 12:00 PM

55 Park Street; Auditorium

Precision Medicine vs Persuasion Medicine: Measuring vs Reading HER2

David Rimm, MD, PhD

Learn More

Genetics RIP

February 22; 12:00 PM

SHM, I-Wing; 304

Helen He | Ningning Zhang

Learn More

Yale Cancer Center Smilow Cancer

Hospital Town Hall

February 22; 5:00 PM

Eric Winer, MD | Lori Pickens, MHA | Kevin Billingsley, MD, MBA, FACS | Kim Slusser, RN, MSN | Kiran Tiruga, MD

Learn More

Life Support: Scalp Cooling

February 23; 9:00 AM

55 Park Street; Auditorium

Maryam Lustberg, MD, MPH | Sarah

Elizabeth Schellhorn, MD | Angela

Khairallah, MSW, LCSW | Roberta Lombardi

| Elisa Riccitelli | Brooke Deans

Learn More

Cancer Genetics and Prevention Program Seminar

February 23; 2:30 PM

Learn More

Center for GI Cancers Seminar Series

2022-2023

Emergency Department: A Randomized Controlled Trial Using the Multiphase Optimization Strategy.

Annals of emergency medicine, 81(2), 209–221.

[Read More](#)

Germing, U., Fenaux, P., Platzbecker, U., Buckstein, R., Santini, V., Díez-Campelo, M., Yucel, A., Tang, D., Fabre, S., Zhang, G., Zoffoli, R., Ha, X., Miteva, D., Hughes, C., Komrokji, R. S., Zeidan, A. M., & Garcia-Manero, G. **Improved benefit of continuing luspatercept therapy: sub-analysis of patients with lower-risk MDS in the MEDALIST study.**

Annals of hematology, 102(2), 311–321.

[Read More](#)

Lerner, G., Tang, H., Singh, K., Golestani, R., St Claire, S., Humphrey, P. A., Lannin, D., Janostiak, R., & Harigopal, M.

AMACR Expression is a Potential Diagnostic Marker in Apocrine Lesions of Breast, and is Associated with High Histologic Grade and Lymph Node Metastases in Some Invasive Apocrine Breast Cancers.

Clinical breast cancer, 23(2), 199–210.

[Read More](#)

Aravind, P., Colakoglu, S., Bhoopalam, M., Ibrahim, A., Mathes, D., Kaoutzanis, C., Mureau, M., & Reddy, S.

Perforator Characteristics and Impact on Postoperative Outcomes in DIEP Flap Breast Reconstruction: A Systematic Review and Meta-Analysis.

Journal of reconstructive microsurgery, 39(2), 138–147.

[Read More](#)

Pandey, R., Fournier, D., Root, G., Riccio, M., Shirvalkar, A., Zamora, G., Daigneault, N., Sapack, M., Zhong, M., & Harigopal, M.

AI-Powered Biomolecular-Specific and Label-Free Multispectral Imaging Rapidly Detects Malignant Neoplasm in Surgically Excised Breast Tissue Specimens.

Archives of pathology & laboratory medicine, 10.5858/arpa.2022-0228-OA.

[Read More](#)

Lang, R., Gill, M. J., Coburn, S. B., Grossman, J., Gebo, K. A., Horberg, M. A., Mayor, A. M., Silverberg, M. J., Willig, A. L., Justice, A. C., Klein, M. B., Bosch, R. J., Rabkin, C. S., Hogan, B., Thorne, J. E., Moore, R. D., Althoff, K. N., & North American AIDS Cohort Collaboration on Research, Design (NA-ACCORD) of the International Epidemiologic Databases to Evaluate AIDS (IeDEA)

The changing prevalence of anemia and risk factors in people with HIV in North America who have initiated ART, 2007-2017.

AIDS (London, England), 37(2), 287–298.

[Read More](#)

Åberg, F., Britton, A., & Luukkonen, P. K.

Changes over time in the Chronic Liver Disease risk score predict liver-related outcomes: longitudinal analysis of the Whitehall II study.

Scandinavian journal of gastroenterology, 58(2), 170–177.

[Read More](#)

Yuan, H., Qing, T., Zhu, S., Yang, X., Wu, W., Xu, K., Chen, H., Jiang, Y., Zhu, C., Yuan, Z., Zhang, T., Jin, L., Suo, C., Lu, M., Chen, X., & Ye, W.

The effects of altered DNA damage repair genes on mutational processes and immune cell infiltration in esophageal squamous cell carcinoma.

Cancer medicine, 10.1002/cam4.5663.

[Read More](#)

O'Toole, D., Kunz, P. L., Webb, S. M., Goldstein, G., Khawaja, S., McDonnell, M., Boiziau, S., Gueguen, D., Houchard, A., Ribeiro-Oliveira, A., Jr, & Prebtani, A.

PRESTO 2: An International Survey to Evaluate Patients' Injection

February 23; 4:15 PM

Michael Cecchini, MD

[Learn More](#)

Endocrinology Clinical Dilemma

February 24; 12:00 PM

BCMM 206/208

Robert Weingold

[Learn More](#)

Yale Cancer Center 2023 Post-ASH CME Series

February 24; 12:00 PM

Amer Zeidan, MBBS | Nikolai Podoltsev, MD,

PhD | Lourdes Mendez, MD, PhD

[Learn More](#)

Yale Cancer Answers

February 26; 7:30 PM

The Care of Patients with Kidney Disease and Cancer

Anushree C Shirali, MD

[Learn More](#)

Yale Cancer Center Grand Rounds

February 28; 12:00 PM

55 Park Street; Auditorium

The PROMISE of early detection and interception in Myeloma

Irene Ghobrial, MD

[Learn More](#)

Genetics RIP

March 1; 12:00 PM

SHM, I-Wing; 304

Madison Rackear | Shengyan Jin

[Learn More](#)

Immunobiology Seminar Series - Gershon Memorial Lecture

March 2; 10:30 AM

The Anlyan Center; Auditorium, N-107

Inflammasomes at the crossroads between basic science and therapeutic intervention

Hao Wu, PhD

[Learn More](#)

Cancer Genetics and Prevention Program Seminar

March 2; 2:30 PM

[Learn More](#)

Center for GI Cancers Seminar Series 2022-2023

March 2; 4:15 PM

Andra Carcak, MD

Andrea Cercek, MD
Experiences with the Latest Devices/Formulations of Long-Acting Somatostatin Analog Therapies for Neuroendocrine Tumors or Acromegaly.

Advances in therapy, 40(2), 671–690.

[Read More](#)

Miguez, S., Lee, Y., Chan, A. X., Demkowicz, P., Jones, B., Long, C. P., Abramson, D. H., Bosenberg, M., Sznol, M., Kluger, H., Goldbaum, M. H., Francis, J. H., Pointdujour-Lim, R., & Bakhoun, M. F.

Validation of the prognostic utility of the gene expression profiling test in patients with uveal melanoma.

Ophthalmology, S0161-6420(23)00064-7.

[Read More](#)

Leapman, M. S., Thiel, C. L., Gordon, I. O., Nolte, A. C., Perecman, A., Loeb, S., Overcash, M., & Sherman, J. D.

Environmental Impact of Prostate Magnetic Resonance Imaging and Transrectal Ultrasound Guided Prostate Biopsy.

European urology, S0302-2838(22)02857-3.

[Read More](#)

Talcott W., Cain D., Yang D., Mougalian S., Evans S.

Aging a Decade in a Day: Age cutoff bias in adjuvant therapy allocation for early-stage breast cancer

International Journal of Radiation Oncology, Biology, Physics

[Read More](#)

Boyden J.Y., Bogetz J., Johnston E., Thienprayoon R., Williams C.S.P., McNeil M., Patneaude A., Widger K., Rosenburg A., Ananth P.

Measuring pediatric palliative care quality: Challenges and opportunities

Journal of pain and symptom management.

[Read More](#)

Funding and Award Opportunities

Mentored Research Scientist Career Development Award in Tobacco Regulatory Research (K01)

The purpose of this FOA is to provide support and protected time (three, four, or five years) for an intensive, supervised career development experience in biomedical, behavioral, and social science research that will inform the development and evaluation of regulations on tobacco product manufacturing, distribution, and marketing and that will lead to research independence.

Application Deadline: February 21, 2023

[Read More](#)

ALSF 2023 POST (Pediatric Oncology Student Training) Program

The POST Program provides an opportunity for students to train with a mentor who is conducting research in the field of pediatric oncology. The POST Program is designed for undergraduate, graduate and medical students interested in pursuing a career in pediatric oncology research. PhD students are not eligible to apply.

Application Deadline: February 21, 2023

[Read More](#)

Pathway to Independence Award in Tobacco Regulatory Research (K99/R00)

The purpose of this FOA is to increase and maintain a strong cohort of new and talented independent investigators conducting research that will inform the development and evaluation of regulations on tobacco product manufacturing, distribution, and marketing.

Application Deadline: February 21, 2023

Andrea Cercek, MD
[Learn More](#)

Yale Cancer Center 2023 Post-ASH CME Series

March 3; 12:00 PM

Scott Huntington, MD, MPH, MSc | Francine Foss, MD

[Learn More](#)



Share your news!

Please submit your recent publications, awards, and grant announcements to:

Renee Gaudette

Director, Public Affairs and Communications

[Read More](#)

NCI Small Grants Program for Cancer Research for Years 2023, 2024, and 2025

This FOA supports small research projects on cancer that can be carried out in a short period of time with limited resources. The R03 grant mechanism supports different types of projects including pilot and feasibility studies; secondary analysis of existing data; small, self-contained research projects; development of research methodology; and development of new research technology.

Application Deadline: February 22, 2023

[Read More](#)

AACR Clinical Oncology Research (CORE) Training Fellowships

The AACR Clinical Oncology Research (CORE) Training Fellowships Program is designed to provide an industry-academic clinical practicum with a unique opportunity for academic clinicians to train in drug development. Each fellowship provides \$100,000 over one year for the fellow to work on site at the facility of one of the AACR's pharmaceutical industry partners.

Application Deadline: February 23, 2023

[Read More](#)

Rising Tide/LUNGeVity Team Award Program to Target Mechanisms of Resistance

This award funds high-impact research that seeks to develop therapeutic strategies targeting shared mechanisms of resistance in oncogene-driven lung adenocarcinoma. The research project(s) that will be funded are expected to further our knowledge of shared mechanisms of resistance across oncogene-driven lung adenocarcinoma (LUAD) and how they can be targeted using novel pharmaceutical agents (monotherapies or combination therapies).

Letters of Intent Due: February 27, 2023

[Read More](#)

EGFR Resisters/LUNGeVity Research Award Program for EGFR-Positive Lung Cancer

The research project(s) that will be funded is (are) expected to have a direct impact on the outcomes of patients with advanced EGFR-positive lung cancer, but innovative proposals that address other unmet needs in the

EGFR-positive lung cancer space are also invited for submission. Please note that we are not accepting psychosocial research proposals as part of this RFA.

Letters of Intent Due: February 27, 2023

[Read More](#)

NCI Cancer Screening Research Network Funding Opportunities

The CSRN conducts rigorous, multi-center cancer screening trials and studies with large and diverse populations in a variety of health care settings with the goal of reducing cancer incidence and cancer-related morbidity and mortality. Cancer screening provides a unique opportunity to diagnose cancers and pre-cancerous lesions before symptoms develop.

- **ACCruel, Enrollment, and Screening Sites (ACCESS) Hub (UG1)**

[Read More](#)

- **Statistics and Data Management Center (UG1)**

[Read More](#)

- **Coordinating and Communication Center (UG1)**

[Read More](#)

Application Deadlines: February 28, 2023

Yale Chapter of the National Bouchet Graduate Honor Society

The Yale Chapter of the National Bouchet Graduate Honor Society is currently accepting nominations for graduate student, postdoc, and faculty membership for induction on March 31, 2023 as part of the annual Yale Bouchet Conference on Diversity and Graduate Education.

Application Deadline: March 1, 2023

[Read More](#)

BRCA Research & Cure Alliance

The BRCA Research & Cure Alliance (CureBRCA) will consider funding BRCA-related initiatives that involve prevention, detection, screening, and/or treatment for men at risk for BRCA-related cancers. Applications will be evaluated by CureBRCA leadership, the CureBRCA Scientific Advisory Committee, and if appropriate: patients, carriers, and/or genetic counselors.

Application Deadline: March 1, 2023

Read More

JH Milstone Fund Grant

JH Milstone Fund will award a grant in 2023 to support early-stage investigators and innovative research that improves understanding of bleeding, thrombosis or thrombolysis. The research can focus on the genetics, biochemistry or cell biology of coagulation or thrombolysis or on the causes, pathogenesis, diagnosis or treatment of bleeding and clotting disorders. In the absence of preliminary data, appropriate mentors and/or collaborators are important. For more information, please contact **Richard Carr**.

Letter of Intent Due: March 1, 2023

Read More

CRI Immuno-Informatics Postdoctoral Fellowship

The CRI Immuno-Informatics Postdoctoral Fellowship Program aims to support qualified young scientists at academic research institutions around the world who wish to receive dual training in immunology and data science. The fellowships will support both computational biologists who seek to strengthen their knowledge of immunology and cancer immunologists who seek training in computational biology, data science, and/or genomics under the mentorship of world-renowned scientists in these disciplines.

Applications Deadline: March 1, 2023

Read More

NIH Enhancing the Use of the All of Us Research Programs Data (R21)

The *All of Us* Research Program within the Office of the Director (OD) encourages investigators to apply for grant awards that will advance research in high-priority mission areas of the Institutes, Centers, and Offices (ICOs)

through two companion FOAs (1) one to use standard methods and approaches to analyze currently available data within the *All of Us* Research Program's Researcher Workbench and (2) one to develop new methods, models, and tools and use them to analyze data in the Researcher Workbench. The new tools will be made broadly available to the scientific community.

Application Deadline: March 1, 2023

Read More

NIH Small Grants to Enhance the Use of the All of Us Research Programs Data (R03)

The *All of Us* Research Program within the Office of the Director (OD) encourages investigators to apply for grant awards that will advance research in high-priority mission areas of the Institutes, Centers, and Offices (ICOs) through two companion FOAs (1) one to use standard methods and approaches to analyze currently available data within the *All of Us* Research Program's Researcher Workbench and (2) one to develop new methods, models, and tools and use them to analyze data in the Researcher Workbench. The new tools will be made broadly available to the scientific community.

Applications Deadline: March 1, 2023

Read More

DeLuca Career Development Award

The purpose of this career development award is to provide early career clinical or laboratory-based investigators in Hematology, the opportunity to focus on research to advance patient care, therapies, and outcomes and with the goal to achieve independent support for their research from a national agency. For more information, please contact **Richard Carr**.

Letter of Intent Due: March 1, 2023

Read More

Innovative Molecular and Cellular Analysis Technologies for Basic and Clinical Cancer Research (R61)

This FOA solicits grant applications proposing exploratory research projects focused on the early-stage development of highly innovative technologies offering novel molecular or cellular analysis capabilities for basic, clinical, or epidemiological cancer research. The emphasis of this FOA is on supporting the development of novel capabilities involving a high degree of technical innovation for targeting, probing, or assessing molecular and cellular features of cancer biology.

Application Deadline: March 1, 2023

Read More

Advanced Development and Validation of Emerging Molecular and Cellular Analysis Technologies for Basic and Clinical Cancer Research (R33)

This FOA invites grant applications proposing exploratory research projects focused on further development and validation of emerging technologies offering novel capabilities for targeting, probing, or assessing molecular and cellular features of cancer biology for basic, clinical, or epidemiological cancer research. This FOA solicits R33 applications where major feasibility gaps for the technology or methodology have been overcome, as demonstrated with supportive preliminary data, but still requires further development and rigorous validation to encourage adoption by the research community.

Application Deadline: March 1, 2023

Read More

Innovative Biospecimen Science Technologies for Basic and Clinical Cancer Research (R61)

This FOA solicits grant applications proposing exploratory research projects focused on the early-stage development of highly innovative technologies that improve the quality of the samples used for cancer research or clinical care. This includes new capabilities to address issues related to pre-analytical

degradation of targeted analytes during the collection, processing, handling, and/or storage of cancer-relevant biospecimens. The overall goal is to support the development of highly innovative technologies capable of maximizing or otherwise interrogating the quality and utility of biological samples used for downstream analyses.

Application Deadline: March 1, 2023

Read More

Advanced Development and Validation of Emerging Biospecimen Science Technologies for Basic and Clinical Cancer Research (R33)

This FOA solicits grant applications proposing exploratory research projects focused on further development and validation of emerging technologies that improve the quality of the samples used for cancer research or clinical care. This includes new capabilities to address issues related to pre-analytical degradation of targeted analytes during the collection, processing, handling, and/or storage of cancer-relevant biospecimens.

Application Deadline: March 1, 2023

Read More

YCCI Educational Funding Support Opportunities

- **YCCI Multidisciplinary Post-Doctoral Training Program in Translational Research:** provide an opportunity for Yale post-doctoral trainees in the Schools of Medicine, Nursing, Public Health, Engineering and Applied Science or other appropriate Departments in the Graduate School to receive up to 2 years devoted to training across the full span of clinical and translational research focused on human health.

Application Deadline: March 10, 2023

Read More

- **YCCI Multidisciplinary Pre-Doctoral Training Program in Translational Research:** aims to identify and support a representative and diverse group of outstanding trainees who specifically want to

pursue careers in clinical and translational research; to train them in the use of state-of-the-art research tools; to enhance their abilities to work collaboratively in complex multidisciplinary research teams; to provide outstanding mentoring (including concordant mentoring) by experienced and diverse faculty that support the trainee's long-term professional development.

Application Deadline: March 10, 2023

Read More

NY Academy of Sciences: Innovators in Science Award: CANCER IMMUNOLOGY

The 2024 Innovators in Science Award will recognize achievements in Cancer Immunology. We welcome nominations from government, non-profit, or equivalent institutions around the world, as well as from the Award's own Scientific Advisory Council, composed of renowned science and technology leaders. Prize winners will be chosen by a panel of judges independently selected by the New York Academy of Sciences, and the Awards will be conferred at a ceremony in early 2024.

Internal Submission Deadline: March 13, 2023

Read More

Diversity and Inclusion in Breast Cancer Research

The following research awards are designed with the primary goal of increasing diversity in the oncology workforce and breast cancer research. These awards are made possible through the support of the Breast Cancer Research Foundation (BCRF).

- **Career Development Award:** Full Application Due: March 13, 2023
<https://old-prod.asco.org/career-development/grants-awards/funding-opportunities/career-development-award>
- **Young Investigator Award:** Full Application Due: March 13, 2023
<https://old-prod.asco.org/career-development/grants-awards/funding-opportunities/young-investigator-award>

AHEAD (Advancing Head and Neck Cancer Early Detection Research) (U01)

The goal of this FOA is to accelerate translation of research to improve early detection of head and neck cancers (HNC). This initiative will encourage development, evaluation, and validation of biomarkers for risk assessment, detection, and molecular diagnosis and prognosis of early HNC.

Application Deadline: March 14, 2023

Read More

Diversity and Inclusion in Breast Cancer Research

The following research awards are designed with the primary goal of increasing diversity in the oncology workforce and breast cancer research. These awards are made possible through the support of the Breast Cancer Research Foundation (BCRF).

- **Career Development Award:** Full Application Due: March 13, 2023

Read More

- **Young Investigator Award:** Full Application Due: March 13, 2023

Read More

AHEAD (Advancing Head and Neck Cancer Early Detection Research) (U01)

The goal of this FOA is to accelerate translation of research to improve early detection of head and neck cancers (HNC). This initiative will encourage development, evaluation, and validation of biomarkers for risk assessment, detection, and molecular diagnosis and prognosis of early HNC.

Application Deadline: March 14, 2023

Read More

Small Research Grants for Analyses of Gabriella Miller Kids First Pediatric Research Data (R03)

The NIH Common Fund has established the Gabriella Miller Kids First Pediatric Research Program (Kids First) to develop a pediatric research data resource populated by genome sequence and phenotypic data that will be of high value for the communities of investigators who study the genetics of childhood cancers and/or structural birth defects.

Application Deadline: March 16, 2023

Read More

Yale Head and Neck SPORE (YHN-SPORE) Career Enhancement Program (CEP)

The CEP of the Yale Head and Neck SPORE has been established to educate the next generation of investigators committed to translational research in head and neck cancer. The CEP will provide support to promising junior investigators and/or establish investigators who have not previously conducted head and neck cancer focused research.

Letter of Intent Due: March 24, 2023

Read More

Yale Head and Neck SPORE (YHN-SPORE) Developmental Research Program (DRP)

The Yale Head and Neck SPORE's DRP provides seed money to investigators to support studies with a strong translational component that have the potential to evolve into, or be incorporated as, a full YHN-SPORE project or to generate preliminary data or evidence of collaboration for other new NIH grant applications.

Letter of Intent Due: March 24, 2023

Read More

ASTRO-LUNGeVity Residents/Fellows in Radiation Oncology Seed Grant

This seed grant fosters and develops the research careers of residents and fellows interested in radiation oncology-related basic, translational, and/or clinical research to benefit patients with lung cancer.

Letters of Intent Due: March 24, 2023

Read More

Breast Cancer Research Program 2023 Awards

This funding supports innovative, high-impact research with clinical relevance that will accelerate progress to end breast cancer for Service Members, Veterans, and the general public.

- Breakthrough Award Levels 1 and 2
- Era of Hope Scholar Award
- Clinical Research Extension Award
- Transformative Breast Cancer Consortium Development Award (TBCCDA)

Letters of Intent Due: March 28, 2023

- Transformative Breast Cancer Consortium Award
- Breakthrough Award Level 3
- Breakthrough Award Level 4
- Innovator Award

Letters of Intent Due: March 29, 2023

Read More

The Chênevert Family Brain Tumor Center at Yale Developmental Research Awards

The Chênevert Family Brain Tumor Center at Yale is pleased to announce DEVELOPMENTAL RESEARCH AWARDS with first funding beginning 07/01/2023 to projects in amounts up to \$100,000 over two years.

The projects must focus on primary or metastatic brain tumors, and they must have a translational focus or high potential to lead to a translational project or a clinical trial.

Internal Submission Deadline: March 31, 2023

Read More

ACS Research Priority Area: Screening

Detecting cancer early saves lives. Unfortunately, the important benefits of cancer screening are not reaching enough people. The purpose of this RFA is to fund innovative research that will facilitate more widespread cancer screening and early detection culminating in reduced cancer mortality.

Internal Submission Deadline: April 3, 2023

Read More

HESI THRIVE Grant

A proud partner of the **Biden Cancer Initiative**, THRIVE provides seed grants for clinical and translational research and technology-based solutions that enhance our ability to predict when and how adverse effects may occur in patients who have received cancer treatment. THRIVE also supports the development of approaches to avoid or lessen these effects.

Letters of Intent Due: April 10, 2023

Read More

Joint SPORE Developmental Research Program (DRP) Award – Cancer Disparities

The YCC Translational Research Office in collaboration with the Yale SPORE in Lung Cancer (YSILC) and the Yale Head and Neck SPORE (YHN-SPORE) have launched a new DRP award to provide support up to \$50,000 for a translational pilot project focused on **disparities-related cancer research** in the field of Head and Neck and/or Lung cancer. Studies with a strong translational or clinical component that have the potential to evolve into, or be incorporated into, a full SPORE project and projects with multi-disciplinary collaborations and/or community-based participatory research studies are encouraged.

We encourage to submit your letter of intent (LOI) to anna.arnal@yale.edu
There is no deadline to apply, LOIs will be reviewed and eligible applicants will be invited to submit a full application online
at: <https://yale.infoready4.com/>

Read More

Yale Cancer Center | 333 Cedar Street, New Haven, CT 06520

[Unsubscribe renee.gaudette@yale.edu](#)

[Update Profile](#) | [Constant Contact Data Notice](#)

Sent by renee.gaudette@yale.edu powered by



Try email marketing for free today!