

June 25, 2021

Announcements

Barbara Burtness, MD, Appointed Interim Associate Cancer Center Director for Diversity, Equity, and Inclusion

We are delighted to announce the appointment of Barbara Burtness, MD, Professor of Medicine (Medical Oncology), as Interim Associate Cancer Center Director for Diversity, Equity, and Inclusion. Dr. Burtness' leadership and innovative ideas will ensure that we emphasize an inclusive culture, with increased diversity in our workforce—including trainees, staff, and faculty—and help to foster the career advancement of all members of our diverse community.



Dr. Burtness has a long track record of advancing equity at Yale School of Medicine and nationally. She has served on the Executive Committee on the Status of Women in Medicine (SWIM) since 2015, represented SWIM on the Faculty Advisory Council, and served on the Dean's Climate Working Group. Nationally, she is the Chair of the Task Force on Advancement for Women for the Eastern Cooperative Oncology Group-American College of Radiology Imaging Network (ECOG-ACRIN) Oncology Research Group. In addition, she brings extensive personal experience to her new role from the successful mentorship of numerous trainees and faculty throughout her career.

We will look to Dr. Burtness to lead our community in implementing initiatives to enhance the culture of belonging at Yale Cancer Center, including programs and training in cultural and structural humility, stigma and discrimination, and sexual harassment. Dr. Burtness will lead the Yale Cancer Center Council for Diversity, Equity, and Inclusion and partner with Darin Latimore, MD, Deputy Dean and Chief

Diversity Officer for Yale School of Medicine, and the leadership of

from the desk of

Nita Ahuja, MD, MBA, FACS

Interim Director, Yale Cancer Center
Interim Physician-in-Chief,
Smilow Cancer Hospital

Yale
NewHaven
Health
Smilow Cancer
Hospital

Yale CANCER
CENTER
A Comprehensive Cancer Center Designated
by the National Cancer Institute

News Center

**How Miles of Memories Inspire One Closer to
Free Rider**



Watch Now

**Shows Combination Treatment Effective in IDH
Mutant Cancers**

Yale Cancer Center and Smilow Cancer Hospital, to advance this work.

[Learn More](#)

Marcus Bosenberg, MD, PhD, Named Inaugural Director of Yale Center for Immuno-Oncology

Marcus Bosenberg, MD, PhD, has been named the Inaugural Director of the Yale Center for Immuno-Oncology. Dr. Bosenberg is Professor of Dermatology, Pathology, and Immunobiology, Co-Leader of the Genomics, Genetics, and Epigenetics Research Program at Yale Cancer Center, Contact Principal Investigator of the Yale SPORE (Specialized Program of Research Excellence) in Skin Cancer, and Director of the Center for Precision Cancer Modeling.

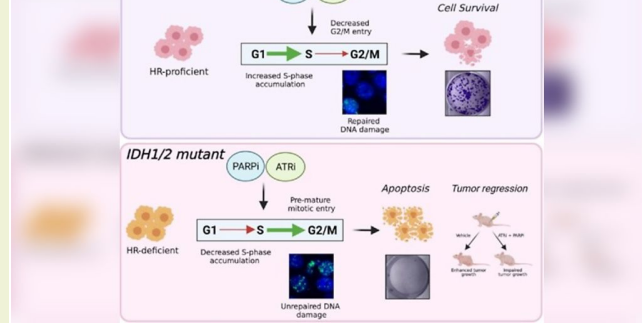


Dr. Bosenberg's research achievements and leadership experience will be instrumental to the success of the Yale Center for Immuno-Oncology. The leadership of Yale Cancer Center looks forward to working together with Dr. Bosenberg to expand our translational research impact in immuno-oncology.

A partnership between Yale Cancer Center and the Department of Immunobiology, the Yale Center for Immuno-Oncology was launched in 2018 to build on Yale's leadership in immunology, cancer biology, and the development of innovative cancer immunotherapies.

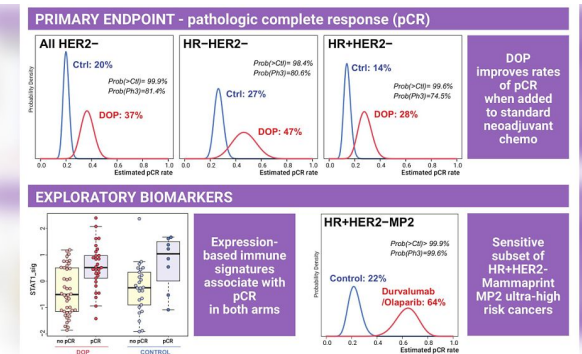
[Learn More](#)

Dickerman Hollister, MD, to Retire after Four Decades of Care



[Read More](#)

Yale Cancer Center Study Shows Immunotherapy Drug Combination Improves Response in HER2-Negative Breast Cancer Including a Subset of Estrogen Receptor Positive Cancers



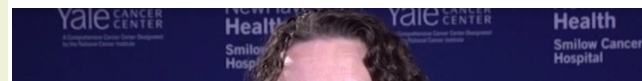
[Read More](#)

Patient Experience Improves With Open Mask Frameless Stereotactic Radiosurgery



[Read More](#)

Meet Dr. Sarah Mougalian





After an outstanding 40-year career, Dickerman Hollister, Jr., MD, has announced that he will be retiring this month. Beloved by the community, Dr. Hollister has treated multiple generations of Greenwich families with grace, expertise, and empathy.

Over the course of his career, Dr. Hollister has served as Greenwich Hospital’s Chief of Staff, Chairman of Oncology, and medical director of the hospital’s Hospice Program. He is past president of both the Fairfield County Medical Association and the Connecticut State Medical Society and board member of many health-related organizations, including local chapters of the American Red Cross, the Greenwich Health Association, the Leukemia & Lymphoma Society, and the Breast Cancer Alliance.

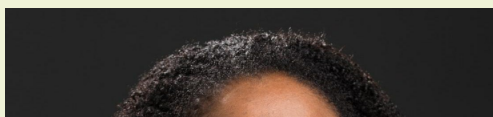
“I’ve been a ‘family oncologist,’ treating adults with all types of cancer and blood diseases. The best part has been my relationship with my patients, getting to know them personally and customizing their care to achieve the best possible outcome,” said Dr. Hollister. “When I returned to Greenwich to start my practice, I treated my friends’ parents. As the decades passed, I treated my friends and now, I treat their children as well. While I know it is the right time to retire, I am sad to leave. This has been such a fulfilling profession, helping patients along difficult journeys, striving for cures, if possible, but support and love always. I can imagine no greater calling.”

Learn More

**Kim Blenman, PhD, MS,
Appointed Assistant
Professor of Medicine**

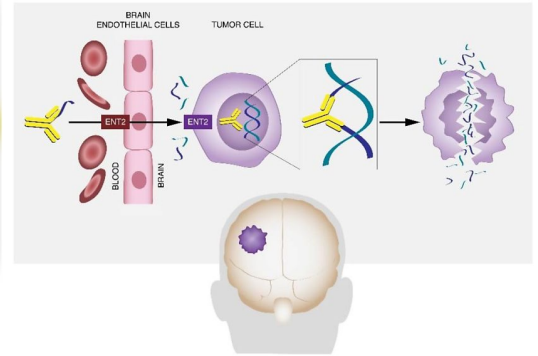
We are very pleased to announce the appointment of Kim Blenman, PhD, MS, as an Assistant Professor of Medicine (Medical Oncology). Dr. Blenman will also have a secondary appointment in the Department of Computer

Science at the Yale School of Engineering and Applied Science. Dr. Blenman



Read More

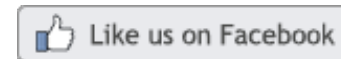
Yale Cancer Center Study Reveals New Pathway for Brain Tumor Therapy



Read More



Join Smilow Cancer Hospital on Facebook



Blood supplies are at critically low levels right now throughout Connecticut and Rhode Island. Thank you to the Leal Family for their advocacy and support of local blood and bone marrow drives in the Westerly Hospital area! Reach out to the RedCross for information on how to donate near you and learn more about their efforts in a recent The Westerly Sun article and why they're so passionate and committed to give back



received her PhD in Immunology and MS in Clinical Chemistry at the University of Florida, College of Medicine. She completed postdoctoral training in Drug & Regulatory Sciences at the University of California, San Francisco, College of Medicine, and was a postdoctoral fellow at the City of Hope Comprehensive Cancer Center, Department of Cancer

Immunotherapeutics and Tumor Immunology focused

on development of prognostic translational tools for breast cancer patients. Prior to joining Yale, Dr. Blenman was a Global Research Director for Inflammatory and Gastrointestinal Diseases in the Drug Discovery and Clinical Development Divisions & Licensing and Acquisition Team at Procter & Gamble Pharmaceuticals. Dr. Blenman came to Yale as an Associate Research Scientist in 2014. She has been awarded the prestigious Melanoma Research Alliance Young Investigator Award (2015 – 2018) and served as co-investigator on NIH NCI R01 and Melanoma Research Foundation Team Science grants. She has a national and international reputation through publications, invited oral presentations, and guideline development. Dr. Blenman is on the steering committee of the Alliance for Digital Pathology Alliance/Pathology Innovations Collaborative Community, has a leadership role in the International Immuno-Oncology Biomarker Working Group on Breast Cancer, and is a member of the NCI Alliance for Clinical Trials in Oncology Symptom Intervention Committee. She is also on the Leadership & Steering Team for the High-Throughput Truthing Project for TILs Assessment led by the FDA.

Dr. Blenman's research uses and develops novel tools to understand the mechanisms responsible for disparities in disease pathogenesis, therapeutic response, and therapy-induced adverse events through interrogation of tumor and immune microenvironments. Her research interest is in reducing/eliminating therapy-induced adverse reactions. She will continue her collaborations with Dr. Lajos Pusztai to advance new therapies and create novel diagnostic/predictive tests.

Notables



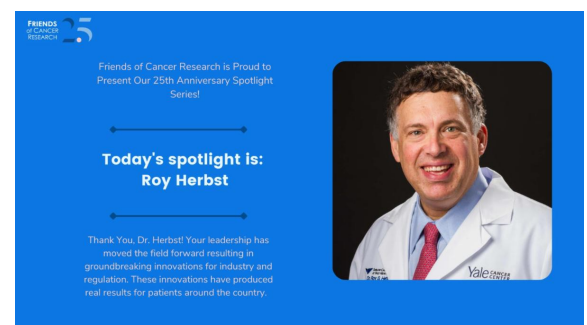
Watch Now

Reduce tobacco harm exposure by participating in a Yale research study. Eligible current smokers may participate in a study switching cigarette use to using oral nicotine pouches. Payment is available.



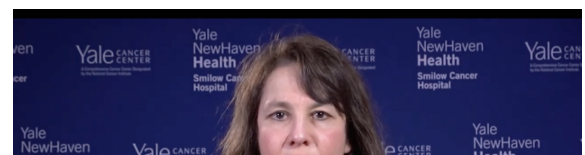
Read More

Dr. Roy Herbst, Chief of Medical Oncology at Smilow Cancer Hospital, was selected as one of 25 scientific and advocacy leaders spotlighted in recognition of the 25th anniversary of Friends of Cancer Research.



Read More

Here's why Dr. Ami Rubinowitz appreciates her role as a thoracic radiologist at Smilow Cancer Hospital: "It's really an honor and a privilege not just to help patients, but to actually be able to look inside their bodies and find what's wrong."





Congratulations to the 2021 graduates of the **Yale Medical Oncology-Hematology Fellowship Program**: **Janie Zhang, MD, Matthew Austin, MD, Prajwal Boddu, MBBS, Talib Dosani, MD, Kelsey Sheehan, MD, Timil Patel, MD, and Mariya Rozenblit, MD.**

Marcella Nunez-Smith, MD, MPH, has been appointed the **C.N.H. Long Professor of Medicine and Epidemiology**, effective July 1. Dr. Nunez-Smith is Associate Cancer Center Director for Community Outreach and Engagement; Chief Health Equity Officer at Smilow Cancer Hospital; Director of the Office of Health Equity Research; Founding Director of the Equity Research and Innovation Center (ERIC); and Director of the Center for Research Engagement (CRE). [Learn More](#)

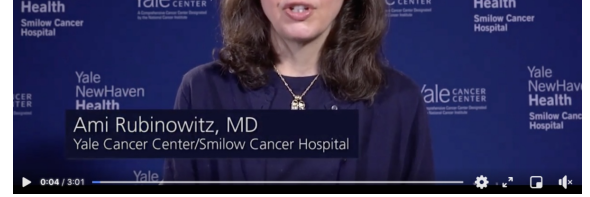
Mehra Golshan, MD, MBA, Professor of Surgery (Oncology), Deputy Chief Medical Officer for Surgical Services, and Clinical Director of the Breast Program, presented at a virtual program hosted by **Alfaisal University in Saudi Arabia** on Advances in Breast Cancer Management last week on Current Updates in Breast Cancer Surgery.

Ranjit Bindra, MD, PhD, Professor of Therapeutic Radiology and a member of Yale Cancer Center's Radiobiology and Radiotherapy Research Program, has been named to the **New Haven Biz Power 25** leaders list in healthcare for 2021 in recognition of his research leading to new cancer treatments and entrepreneurial leadership.

Morgan Levine, PhD, Assistant Professor of Pathology and of Epidemiology (Chronic Diseases) and member of Yale Cancer Center's Genomics, Genetics, and Epigenetics Research Program, is the recipient of the **2021 Vincent Cristofalo Rising Star Award** given by the American Federation for Aging Research.

Roy S. Herbst, MD, PhD, Ensign Professor of Medicine, Chief of Medical Oncology, and Associate Cancer Center Director for Translational Research, was selected as one of 25 scientific and advocacy leaders spotlighted in recognition of the **25th anniversary of Friends of Cancer Research**.

The **Cancer Prevention and Control Research Program** welcomes **Joseph Ross, MD, MHS**, and **Susan Busch, PhD**. Dr. Ross is a Professor of Medicine and Public Health (Health Policy and Management). Dr. Ross uses health services and outcomes research



[Read More](#)

Our Oncology Pharmacy team shared how pharmacy is an integral part of patient care at Smilow Cancer Hospital, and the resources available to assist patients access the medications needed for treatment on Yale Cancer Answers. Join Nancy Beaulieu, BSP Pharm, BCOP, and Brenda Sepulveda, Medication Assistance Program Coordinator, for this important discussion on Connecticut Public Radio.



[Read More](#)

Congratulations to Suzanne B. Evans, MD, MPH, who has been promoted to Professor of Therapeutic Radiology. Dr. Evan's promotion acknowledges her incredible dedication to advancing research innovations, the clinical care of our patients, and teaching and mentorship of our trainees.



management). Dr. Busch also leads research and outcomes research methods to examine factors that affect the use or delivery of recommended ambulatory care services for older adults and other vulnerable populations, evaluate the impact of state and federal policies on the delivery of appropriate and higher quality care, and issues related to pharmaceutical and medical device regulation, evidence development, post market surveillance, and clinical adoption. Specifically, his research projects have examined use of cancer prevention care, disparities in cancer prevention care, adoption of cancer treatment, and regulatory issues related to oncology therapeutics.

Dr. Busch is a Professor of Public Health (Health Policy) and a Professor in the Institute for Social and Policy Studies. Her work in cancer has been in two areas: breast cancer screening and tobacco use. Along with other members of the Cancer Outcomes, Public Policy, and Effectiveness Research (COPPER) Center, Dr. Busch has examined two important recent innovations in breast cancer screening: state dense breast notification laws and the 3D mammography. Her focus on tobacco cessation led to an evaluation of the Affordable Care Act (ACA)'s tobacco surcharges, which allowed marketplace plans to vary premiums based on smoker status in some states. In addition, she recently completed research assessing the effects of smoke-free air laws on combustible- and e-cigarettes.

Diversity, Equity, and Inclusion



At Yale Cancer Center and Smilow Cancer Hospital, we are committed to building diversity, inclusion and engagement. In this new corner of Direct Connect, we will regularly highlight our goals and achievements in diversity, equity, and inclusion (DEI) throughout Yale Cancer Center and Smilow Cancer Hospital. This month's momentous signing of the Juneteenth National Independence Day Holiday bill, making Juneteenth a federal holiday is an important step forward in celebrating

the strength and resilience of the Black community. We must recognize that many Americans continue to find equality and justice elusive, and we call on everyone in our community to stand for racial justice and inclusion.



[Read More](#)

A new \$8.5 million grant from the National Institute of General Medical Sciences of the National Institutes of Health (NIH) will seek to answer some of the big questions of the so called "dark matter" of the metabolome. The Yale Institute of Biomolecular Design and Discovery on Yale West Campus, directed by Jason Crawford, PhD, Maxine F. Singer '57 Associate Professor of Chemistry and of Microbial Pathogenesis principal investigator of the grant (Developmental Therapeutics), will join forces with faculty from across Yale with research backgrounds in chemical biology, immunobiology, epidemiology, and microbial pathogenesis. Their goal is to illuminate novel small molecule signals from the dark matter of the host-bacteria interface that regulate host G-protein coupled receptor signaling programs. Yale Cancer Center members Noah Palm, PhD, (Cancer Immunology) and Caroline Johnson, PhD, (Cancer Prevention and Control) are co-principal investigators of the grant and Andrew Goodman, PhD, (Developmental Therapeutics) is a significant contributor to the program.



PRIDE MONTH

The month of June also celebrates Pride Month, commemorating the LGBTQ+ community in all its diversity. Honoring the protests at the Stonewall Inn in 1969, Pride Month reminds us of the long fight for LGBTQ+ rights, and of the important part LGBTQ+ individuals have played in the struggle for civil rights and equality in the United States, and we honor that history. We are proud that Yale New Haven Health is named a leader by the Healthcare Equality Index for its LGBTQ-inclusive patient centered care, support, and employee benefits and policies. Yale Cancer Center and Smilow Cancer Hospital are committed to respecting and welcoming all, irrespective of sexual orientation or gender identity, and to ensuring equal opportunities for all the members of our community.

Employee Profile: Luci Gilkes

On an annual basis, more than 400 physicians and/or internal medicine residents submit applications for consideration for 10 hematology-oncology fellowship program positions available at Yale Cancer Center. As the fellowship coordinator, Lucilina (Luci) Gilkes engages with all applicants, and supports those who become fellows throughout their training at Yale.

As she manages the entire application process for the fellowship program, Luci works with the program directors to review all

applications and coordinates each round of interviews for candidates. Once the fellowship class is selected, she also organizes orientation, and oversees revisions and updates to the curriculum for all three years of fellowship. Her role also requires scheduling of conferences, didactics, and managing the block schedule and AMION schedule. In addition to the schedules she manages, she also organizes events and conferences, and serves as a proctor for in-service exams for the



Design and Discovery
Receives \$8.5 Million Grant
from the NIH


YaleNewHavenHealth
Smilow Cancer Hospital


Yale
CANCER
CENTER
A Comprehensive Cancer Center Designated
by the National Cancer Institute


[Read More](#)


Follow Yale Cancer Center on Twitter


Follow us on [twitter](#)


 We are excited to welcome the Lustberg Family to Connecticut! @maryam_lustberg joins us as leader of our Breast Center @SmilowCancer and Chief of Breast Medical Oncology and Dr. Mark Lustberg joins @YaleIMed in Infectious Diseases.

 @DrRoyHerbstYale recently discussed updated toxicity data from the @LungMAP non-matched sub-study S1800A presented at the virtual ASCO Annual Meeting with @HemOncToday.

 "Very clearly outcome is improved when patients get treatment with high volume experts through multidisciplinary teams." @BarbaraBurtness presenting on the @SmilowCancer #HeadAndNeckCancer Disease Aligned Research Team at @YaleCancer Grand Rounds.

 Join us today at Noon for a virtual @YaleCancer Grand Rounds. @BarbaraBurtness @AartiBhatiaMD and Dr. Melissa Young present advances from the "Head and Neck Cancers Disease Aligned Research Team (DART)."

 Please welcome @BarbaraBurtness as Interim Associate Cancer Center Director for Diversity, Equity, and Inclusion. We are grateful for Dr. Burtness' leadership & guidance in #DEI and look forward to advancing these principles throughout our clinical, research & teaching missions.

 Dr. Regina Hooley @YaleRadiology sharing why annual screening for women in their 40s remains important during our #CME seminar hosted by @MehraGolshan

conferences, and serves as a proctor for in-service exams for the fellows.

It is an intense position requiring a lot of organization and communication with program directors, faculty, and fellows, but Luci thoroughly enjoys her job. "It keeps me busy, but I really enjoy supporting the directors and working with the fellows; they are all wonderful people who make me feel valued."

"Luci is the heart and soul of our hematology and medical oncology fellowship program," said Alfred Lee, MD, PhD, Director of the Hematology-Oncology Fellowship Program. "She is universally beloved in her roles as mom, boss, and miracle worker. She is tirelessly dedicated to the well-being of our fellows and has helped to make our program what it is today."

In addition to everything she does with the fellows, she also coordinates the Physician-Scientist Track (PST) interviews. PSTs are residents who short track into fellowship. As an alternative to completing a four-year internal medicine residency, two years of residency training are completed and then they advance into fellowship and complete an additional 1.5 years focusing on research.

Luci works with Stephanie Halene, MD, Chief of Hematology, on the PST interview process, and Dr. Halene shared, "Luci is simply amazing from start to finish, from recruitment of new fellows to their graduation and beyond!"

Recent Publications

Grant MJ, Herbst RS, Goldberg SB.

Selecting the optimal immunotherapy regimen in driver-negative metastatic NSCLC.

Nature Reviews Clinical Oncology, 2021.

[Read More](#)

Laird, J, Leventhal, J, Kanowitz, J, Damast, S.

Radiation Recall Dermatitis After Capecitabine In a Patient with Triple Negative Breast Cancer.

Practical radiation oncology, S1879-8500(21)00157-0. Advance online publication.

[Read More](#)

Gonzalez G, Gong S, Laponogov I, Bronstein M, Veselkov K.

Predicting Anticancer Hyperfoods with Graph Convolutional Networks.

Human Genomics, 15(1):33.

[Read More](#)

Patel KK, Parker T, Di M, Bar N, Huntington SF, Giri S.

Cost-effectiveness of Once-weekly Selinexor, Bortezomib, and Dexamethasone in Relapsed or Refractory Multiple Myeloma.

Leukemia & Lymphoma, Online ahead of print.

[Read More](#)

seminar hosted by @menraGulshan.



New research led by .@AmritaSule & @ranjitbindra in @NAR_Cancer_EIC

could lead to minimizing toxicities with combination therapy for patients with IDH mutant #cancers.



Register for our virtual CME seminar highlighting innovative approaches to

breast cancer screening, radiation oncology & breast reconstruction Friday, 6/18 at noon. Hosted by @MehraGolshan



Encouraging new research led by Dr. Lajos Pusztai published in @Cancer_Cell

shows combining the immunotherapy drug durvalumab & PARP-inhibitor olaparib with chemotherapy improves response in HER2-negative #breastcancer.



Tune in to a @BCRFcure podcast with @MehraGolshan discussing innovative

approaches to tailor surgery and therapy for patients with early-stage breast cancer with @chrisiback.



Congratulations to .@RanjitBindra who joins several @YaleMed and @YNHH

leaders on this year's @Newhavenbiz "Meet the Power 25: Healthcare 2021" list.



Register to join @NCIDirector and @PostLive for an insightful conversation on

the progress made since the National Cancer Act was signed 50 years ago on Thursday, June 17 at 11am EST.



New research by Dr. James Hansen & Dr. Jiangbing Zhou just published @JCI_Insight

reveals a new pathway for #braintumor therapy by circumventing the blood brain barrier.

Calendar

5th Annual International Congress on Oncology & Pathology

June 26; 8:00 AM

Towards Harmonization of Pathology and Oncology Standards

Barbara Burtness, MD | Daniel Petrylak, MD | Lajos Pusztai, MD, DPhil | Kurt Schalper, MD, PhD

[Learn More](#)

Yale Cancer Answers

June 27; 7:30 PM

[Read More](#)

Nessim C, Raut CP, Callegaro D, Barretta F, Miceli R, Fairweather M, Blay JY, Strauss D, Rutkowski P, Ahuja N, Gonzalez R, Grignani G, Quagliuolo V, Stoeckle E, Lahat G, De Paoli A, Pillarisetty VG, Canter RJ, Mullen JT, Pennacchioli E, van Houdt W, Swallow CJ, Schrage Y, Cardona K, Fiore M, Gronchi A, Bagaria SP.

ASO Visual Abstract: An Analysis of Differentiation Changes and Outcomes at the First Recurrence of Retroperitoneal Liposarcoma by the Transatlantic Australasian Retroperitoneal Sarcoma Working Group (TARPSWG).

Annals of Surgical Oncology, Online ahead of print.

[Read More](#)

Pusztai L, Yau C, Wolf DM, Han HS, Du L, Wallace AM, String-Reasor E, Boughey JC, Chien AJ, Elias AD, Beckwith H, Nanda R, Albain KS, Clark AS, Kemmer K, Kalinsky K, Isaacs C, Thomas A, Shatsky R, Helsten TL, Forero-Torres A, Liu MC, Brown-Swigart L, Petricoin EF, Wulfkuhle JD, Asare SM, Wilson A, Singhrai R, Sit L, Hirst GL, Berry S, Sanil A, Asare AL, Matthews JB, Perlmutter J, Melisko M, Rugo HS, Schwab RB, Symmans WF, Yee D, Van't Veer LJ, Hylton NM, DeMichele AM, Berry DA, Esserman LJ.

Durvalumab with Olaparib and Paclitaxel for High-Risk HER2-Negative Stage II/III Breast Cancer: Results from the Adaptively Randomized I-SPY2 Trial.

Cancer Cell, S1535-6108(21)00275-0, Online ahead of print.

[Read More](#)

Weiss SA, Djureinovic D, Jessel S, Krykbaeva I, Zhang L, Jilaveanu L, Ralabate A, Johnson B, Shanwetter Levit N, Anderson G, Zelterman D, Wei W, Mahajan A, Trifan O, Bosenberg M, Kaech SM, Perry CJ, Damsky W, Gettinger S, Sznol M, Hurwitz M, Kluger HM.

A Phase I Study of APX005M And Cabiralizumab with/without Nivolumab in Patients with Melanoma, Kidney Cancer or Non-Small Cell Lung Cancer Resistant to Anti-PD-(L)1.

Clinical Cancer Research, Online ahead of print.

[Read More](#)

Breen CT, Chao J, Mehra S, Kohli N..

Extranodal Head and Neck Mantle Cell Lymphoma: Characteristics, Treatment, and Survival.

Annals of Otolaryngology, Rhinology & Laryngology, Online ahead of print.

[Read More](#)

Vyas M, Jain D.

An Update on Subtypes of Hepatocellular Carcinoma: from Morphology to Molecular

Indian Journal of Pathology & Microbiology, 64(Supplement):S112-S120.

[Read More](#)

Roussos Torres ET, Rafie CI, Wang C, Lim D, Brufsky AM, LoRusso PM, Eder JP, Chung V, Downs M, Geare M, Piekarcz RL, Streicher H, Anforth L, Rudek MA, Zhu Q, Besharati S, Cimino-Mathews A, Anders RA, Stearns V, Jaffee EM, Connolly RM.

Phase 1 Study of Entinostat and Nivolumab with or without

June 27, 7:30 PM

NPR

Advanced Radiosurgery Techniques

Krishan Jethwa, MD

[Learn More](#)

Yale Summer Course in Clinical Trials

June 28-29

Elizabeth Claus, PhD, MD | Maria Ciarleglio, PhD |

Denise Esserman, PhD | Robert Makuch, PhD |

Peter Peduzzi, PhD

[Learn More](#)

Smilow Cancer Hospital Care Center in Greenwich Celebrates Survivors with Sound Healing Meditation

June 28; 10:30 AM

Carl & Dorothy Bennet Community Garden,

Greenwich Hospital

[Learn More](#)

Office of Health Equity Research Fireside Chat

June 28; 6:30 PM

Camara Jones

[Learn More](#)

Virtual Schwartz Center Rounds

June 29, 12:00 PM

Why Did We Choose This Path: A Personal Reflection On Why We Choose The Field We Are In Before, During And After The Pandemic A Year Later

Brian Lin, LCSW & Edward Schwartz, LCSW

[Learn More](#)

Smilow Shares 2021 Survivorship Series

June 29; 7:00 PM

Holistic Coping Strategies for Cancer Survivorship

Jennifer Kilkus | Edward Schwartz, LSCW | Dwain

Fehon, PsyD

[Learn More](#)

Center for Methods in Implementation and Prevention Science (CMIPS) Global Mental Health Promotion (GMHP) Seminar Series

June 30; 12:00 PM

Farooq Naeem, MBBS, MSc, PhD

[Learn More](#)

Smilow Shares

June 30; 6:00 PM

Multiple Myeloma

Noffar Bar, MD | Sabrina Browning, MD | Tara

Anderson, MSBS, PA-C

[Learn More](#)

Phase I Study of Entinostat and Nivolumab with or without Ipilimumab in Advanced Solid Tumors (ETCTN-9844).

Clinical Cancer Research, Online ahead of print.

[Read More](#)

Ratray Z, Deng G, Zhang S, Shirali A, May CK, Chen X, Cuffari BJ, Liu J, Zou P, Ratray NJ, Johnson CH, Dubljevic V, Campbell JA, Huttner A, Baehring JM, Zhou J, Hansen JE.

ENT2 Facilitates Brain Endothelial Cell Penetration and Blood-Brain Barrier Transport by a Tumor-targeting Anti-DNA Autoantibody.

JCI Insight, Online ahead of print.

[Read More](#)

Garbarino J, Eckroate J, Sundaram RK, Jensen RB, Bindra RS.

Loss of ATRX Confers DNA Repair Defects and PARP Inhibitor Sensitivity.

Translational Oncology, 14(9):101147, Online ahead of print.

[Read More](#)

Sutton TL, Walker BS, Radu S, Dewey EN, Enestvedt CK, Maynard E, Orloff SL, Nabavizadeh N, Sheppard BC, Lopez CD, Billingsley KG, Mayo SC.

Degree of Biliary Tract Violation During Treatment of Gallbladder Adenocarcinoma is Independently Associated with Development of Peritoneal Carcinomatosis.

Journal of Surgical Oncology, Online ahead of print.

[Read More](#)

Ecker V, Stumpf M, Brandmeier L, Neumayer T, Pfeuffer L, Engleitner T, Ringshausen I, Nelson N, Jücker M, Wanninger S, Zenz T, Wendtner C, Manske K, Steiger K, Rad R, Müschen M, Ruland J, Buchner M.

Targeted PI3K/AKT-hyperactivation Induces Cell Death in Chronic Lymphocytic Leukemia.

Nature Communications, 12(1):3526.

[Read More](#)

Dhodapkar M, Zhang AD, Puthumana J, Downing NS, Shah ND, Ross JS.

Characteristics of Clinical Studies Used for US Food and Drug Administration Supplemental Indication Approvals of Drugs and Biologics, 2017 to 2019.

JAMA Network Open, 4(6):e2113224.

[Read More](#)

Yang SC, Wang JD, Wang SY.

Considering Lead-time Bias in Evaluating the Effectiveness of Lung Cancer Screening with Real-world Data.

Scientific Reports, 11(1):12180.

[Read More](#)

Fong L, Morris MJ, Sartor O, Higano CS, Pagliaro L, Alva A, Appleman LJ, Tan W, Vaishampayan U, Porcu R, Tayama D, Kadel EE, Yuen KC, Datye A, Armstrong AJ, Petrylak DP.

A Phase Ib Study of Atezolizumab with Radium 223 Dichloride in

Center for GI Cancers Weekly Seminar

July 1; 4:00 PM

ASCO 2021 Review

[Learn More](#)

Yale Cancer Center Chalk Talk

July 2; 11:00 AM

Uncovering the Determinants of Effective Anti-tumor Immunity in Renal Cell Carcinoma

David A. Braun, MD, PhD

[Learn More](#)

Yale Cancer Answers

July 4; 7:30 PM

NPR

Skin Cancer Awareness

Kathleen Suozzi, MD

Center for GI Cancers Weekly Seminar: Journal Club

July 8; 4:00 PM

Marie Robert, MD

[Learn More](#)

Submissions

Please submit your recent publications, awards, and grant announcements to:

[Renee Gaudette](#)

Director, Public Affairs and Communications

A Phase Ib Study of Atezolizumab with Radium-223 Dichloride in Men with Metastatic Castration-Resistant Prostate Cancer.

Clinical Cancer Research, Online ahead of print.

Read More

Huang RSP, Haberberger J, McGregor K, Mata DA, Decker B, Hiemenz MC, Lechpammer M, Danziger N, Schiavone K, Creeden J, Graf RP, Strowd R, Lesser GJ, Razis ED, Bartsch R, Giannoudis A, Bhogal T, Lin NU, Pustai L, Ross JS, Palmieri C, Ramkissoon SH.

Clinicopathologic and Genomic Landscape of Breast Carcinoma Brain Metastases.

The Oncologist, Online ahead of print.

Read More

Peng G, Chai H, Ji W, Lu Y, Wu S, Zhao H, Li P, Hu Q.

Correlating Genomic Copy Number Alterations With Clinicopathologic Findings in 75 Cases of Hepatocellular Carcinoma.

BMC Medical Genomics, 14(1):150.

Read More

Funding and Award Opportunities

NCI Equity and Inclusion Program RFIs

- **Seeking Stakeholder Input on Enhancing Cancer Health Disparities Research:** This RFI is open to researchers, clinicians, academic institutions, healthcare and community organizations, and the public. Please follow the submission instructions in the RFI and submit your response by June 25, 2021.
- **Seeking Stakeholder Input on Enhancing Diversity and Inclusion in the Cancer Research Workforce:** This RFI is open to extramural grantees, staff and researchers in academic institutions and industry, federal employees, and the public. Please follow the submission instructions in the RFI and submit your response by July 15, 2021.

Read More

Gabrielle's Angel Foundation

Gabrielle's Angel Foundation remains committed to funding innovative, translational proposals and to supporting promising independent early-career investigators, rather than well-established, senior scientists.

Letter of Intent Due: June 27, 2021

Read More

3D Technologies to Accelerate HTAN Atlas Building Efforts (UH2)

Through this FOA, the NCI, as a part of its Beau Biden Cancer Moonshot Initiative, invites submission of applications requesting support for projects that will accelerate cancer research.

Application Deadline: June 30, 2021

Read More

NCI Clinical Proteomic Tumor Analysis Consortium (CPTAC)

These FOAs support the NCI CPTAC managed by the Office of Cancer Clinical Proteomics Research (OCCPR). CPTAC leverages recent advancements in cancer proteomics and genomics to better

recent advancements in cancer proteomics and genomics to better understand the complexity between the proteome and the genome in cancer and accelerate research in these areas by disseminating resources for the scientific community.

- Proteome Characterization Centers (PCCs) for Clinical Proteomic Tumor Analysis Consortium (U24): **Application Deadline:** June 30, 2021 **Read More**
- Proteogenomic Data Analysis Centers (PGDACs) for Clinical Proteomic Tumor Analysis Consortium (U24): **Application Deadline:** June 30, 2021 **Read More**
- Proteogenomic Translational Research Centers (PTRCs) for Clinical Proteomic Tumor Analysis Consortium (U01): **Application Deadline:** July 30, 2021 **Read More**

SU2C Lung Cancer Health Equity Research Team Grant Program

This program seeks to address the issue of low participation by racial and ethnic minority populations in lung cancer research despite the disproportionate burden of disease in these groups through studies that inform clinical practice and evaluate approved regimens in special or expanded populations.

Application Deadline: July 1, 2021

Read More

Bristol Myers Squibb Foundation Diversity in Clinical Trials Career Development Program

The BMSF DCTCDP is a 2-year program designed to support the career development of early-stage investigator (as defined by NIH) physicians underrepresented in medicine, or physicians who have a demonstrated commitment to increasing diversity in clinical research, to become independent clinical trial investigators who are engaged in advancing health equity through their research and mentoring.

Application Deadline: July 2, 2021

Read More

Emergency Awards: Community-engaged COVID-19 Testing Interventions among Underserved and Vulnerable Populations RADx-UP Phase II (U01 Clinical Trial Optional)

This FOA uses an emergency U01 mechanism to support Phase II of the Rapid Acceleration of Diagnostics – Underserved Populations (RADxSM-UP) initiative. These two-year Testing Research Projects will (1) expand the scope and reach of RADxSM-UP testing interventions to reduce COVID-19 disparities among underserved and vulnerable populations and (2) address scientific questions on interventions to increase access and uptake of COVID-19 testing given the increasing availability of SARS-CoV-2 vaccines.

Application Deadline: July 7, 2021

Read More

Emergency Award: RADx-UP - Social, Ethical, and Behavioral Implications (SEBI) Research on Disparities in COVID-19 Testing among Underserved and Vulnerable Populations (U01)

The overarching goal of the RADx-UP initiative is to understand and ameliorate factors that have placed a disproportionate burden of the pandemic on underserved and/or vulnerable populations, specifically by implementing programs that expand the scope and reach of COVID-19 testing interventions to reduce these disparities.

Application Deadline: July 7, 2021

Application Deadline: July 7, 2021

Read More

DoD Ovarian Cancer Research Program Awards

- Pilot Award - Application Deadline: July 8
- Proteogenomics Award - Application Deadline: July 8
- CDMRP Inv Initiated Award - Application Deadline: July 8
- Clin Translational Award - Application Deadline: July 8
- CDMRP Academy Award - Application Deadline: July 8
- CDMRP Omics Consortium Award - Application Deadline: July 8

Read More

2021 ALSF Young Investigator Grant

The Young Investigator Grant is a mentored career development award designed to support early career researchers, such as postdoctoral fellows, clinical fellows or instructors, striving to develop independent careers in pediatric cancer research.

Application Deadline: July 12, 2021

Read More

Tobacco Regulatory Science (R01)

The purpose of this FOA is to invite R01 applications to support biomedical and behavioral research that will provide scientific data to inform regulation of tobacco products to protect public health.

Application Deadline: July 14, 2021

Read More

Exercise and Nutrition Interventions to Improve Cancer Treatment-Related Outcomes (ENICTO) in Cancer Survivors Consortium (U01)

Through this FOA, the NCI seeks to support exercise and/or medical nutrition intervention research designed to improve cancer treatment-related outcomes for therapies delivered with curative or life-extending intent to cancer survivors.

Application Deadline: July 14, 2021

Read More

Coordinating Center for Exercise and Nutrition Interventions to Improve Cancer Treatment-Related Outcomes (ENICTO) in Cancer Survivors Consortium (U24)

Through this FOA, the NCI will support a Coordinating Center (CC) to facilitate coordination across the new Exercise and Nutrition Interventions to Improve Cancer Treatment-related Outcomes awardee sites.

Application Deadline: July 14, 2021

Read More

Oncomine Clinical Research Grant Program

The Oncomine Clinical Research Grant Program supports investigator-initiated studies (IIS) and education projects, on molecular testing in oncology and reproductive health, with the goal to increase high quality molecular profiling for patients and to improve clinical outcomes in the future.

Application Deadline: July 16, 2021

Read More

Continuing Education with Research for Cancer-Related Genes (R50)

Centers on Telehealth Research for Cancer-Related Care (P50)

The purpose of this FOA is to fund P50 Centers dedicated to advancing a national telehealth research agenda focused on improving cancer-related care and outcomes across the cancer control continuum in a rapidly changing healthcare, policy, technology, and communication environment.

Application Deadline: July 20, 2021

Read More

Yale SPORE in Skin Cancer Awards

Developmental Research Program: Support a broad spectrum of innovative pilot projects applicable to human skin cancer risk, prevention, diagnosis, prognosis, or treatment.

Career Enhancement Program: Support new investigative cutaneous oncologists and other scientists committed to multidisciplinary studies investigating the relevance of biological discoveries in human skin cancer risk, prevention, diagnosis, prognosis or treatment, and enhance the careers of individuals who are already productively investigating this field.

Application Deadline: July 26, 2021 Please email David F. Stern df.stern@yale.edu with questions about DRP and CEP awards.

Read More

Launching Future Leaders in Global Health (LAUNCH) Research Training Program (D43)

The purpose of this program is to provide opportunities for up to six consortia to develop or expand global health research training programs

Application Deadline: August 20, 2021

Read More

Yale Cancer Center 2022 Team Challenge Award

An internal grant program focused on advancing the work of teams who seek to address a fundamental research priority that aligns and/or has the potential to successfully extend YCC strategic goals.

Letter of Intent Due: September 1, 2021

Read More

Early Detection Research Network FOAs

The mission of the EDRN is to discover, develop and validate biomarkers and imaging methods to detect early-stage cancers and to assess risk for developing cancer, and to translate these biomarkers and imaging methods into clinical tests. There are three specific units with EDRN:

- Clinical Validation Centers (U01)
- Data Management and Coordinating Center (U24)
- Biomarker Characterization Centers (U2C)

Application Deadlines: September 9, 2021

Read More

DoD Kidney Cancer Research Program

The FY21 Defense Appropriations Act provides funding to the Department of Defense Kidney Cancer Research Program (KCRP) to support research of exceptional scientific merit in the area of kidney cancer.

- **Academy of Kidney Cancer Investigators – Early-Career**

Investigator Award: Letter of Intent Due: September 14, 2021

- **Clinical Trial Award – Letter of Intent Due:** September 14, 2021
- **Clinical Research Nurse Development Award – Letter of Intent Due:** September 14, 2021

[Read More](#)