

DirectConnect

Inside Yale Cancer Center

September 17, 2021

Announcements



Our Closer to Free Ride is Unstoppable!

Thanks to our amazing Closer to Free community, we exceeded last year's participation in our Closer to Free Ride and had over 2,000 riders from 30 states and 2 countries. A special thanks to Jessica Scheps in the Yale New Haven Hospital Development Office for her leadership and commitment to the Ride's success. Fundraising remains open until September 30—please take a moment to support our riders and amazing teams as we close in on \$2 million to support patient care and cancer research at Smilow Cancer Hospital and Yale Cancer Center this year!

Ride Closer to Free

Celebrating Our Nurses

Earlier this week, we were proud to celebrate our Smilow nurses, Patient Care Associates (PCAs), and Ambulatory Care Associates (ACAs) during an online ceremony to award the 2021 Smilow Cares RN/PCA/ACA Scholarships. Ten scholarships supported by The Frederick A. DeLuca Foundation were awarded to recipients currently enrolled in an accredited school of nursing program. Each of the awardees embraces the mission and vision of Smilow Cancer Hospital and demonstrates a commitment to

oncology nursing patient care, the ability to communicate and collaborate

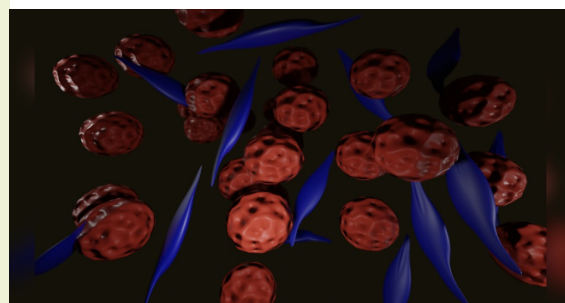
from the desk of
Nita Ahuja, MD, MBA, FACS
Interim Director, Yale Cancer Center
Interim Physician-in-Chief,
Smilow Cancer Hospital

Yale
NewHaven
Health
Smilow Cancer
Hospital

Yale **CANCER**
CENTER
A Comprehensive Cancer Center Designated
by the National Cancer Institute

News Center

Doctors Identify an Eye Cancer Culprit



[Read More](#)

**Meet Kathy, Kidney and Bladder Cancer
Survivor**

effectively, and a commitment to life-long learning. We are extremely grateful to Liz DeLuca for taking the time to join us and celebrate our nursing staff, and for her ongoing generous support of our nurses and the advancement of the nursing profession throughout Smilow Cancer Hospital.

Thank you to the Nursing Rewards & Recognition Committee, chaired by Sandy Morgan and Sarah Infantino, for their work throughout the year to support our efforts to recognizing our nursing staff. Congratulations to the following recipients of the 2021 Scholarships:

- **Karen London**, Ambulatory Care Associate, Pediatric Hematology/Oncology
- **Noelle Kyle**, Patient Care Associate, Medical Oncology – NP 12
- **Kristen White**, Patient Care Associate, Surgical Oncology – NP 15
- **Delilah Langley Franks**, Ambulatory Care Associate, Women's Oncology Infusion Services
- **Ivette Hernandez**, Ambulatory Care Associate, Smilow Cancer Hospital Care Center in Guilford
- **Martha Kraak**, Patient Services/Practice Nurse, Smilow Cancer Hospital Care Center in North Haven
- **Arlene Mingione**, Practice Nurse, Smilow Cancer Hospital Care Center in Guilford
- **Kristina Capretti**, Clinical Program Director, Smilow Cancer Hospital Care Center in Greenwich
- **Amanda Kardas**, Outpatient Infusion Medical Oncology/Hematology Nurse, Smilow Cancer Hospital Care Center in Waterbury
- **Brooke Schrameck**, Assistant Patient Service Manager, Smilow Cancer Hospital Care Centers in Derby, Waterbury, and Torrington

Lynn D. Wilson, MD, MPH, Appointed Deputy Chief Medical Officer for Radiation Oncology

We are pleased to announce the appointment of Lynn D. Wilson, MD, MPH, to Deputy Chief Medical Officer for Radiation Oncology for Smilow Cancer Hospital and our Smilow Cancer Hospital Network. Dr. Wilson's established leadership in the Department of Therapeutic Radiology and dedication to the success of our radiation oncology program has led to enhanced, innovative care for our patients and a steadfast focus on excellence. In his new role, Dr. Wilson will partner with our Smilow leadership team to ensure multidisciplinary treatment is available to all patients and coordinated radiation oncology treatment is accessible throughout our Smilow Cancer Hospital Network.



A Professor of Therapeutic Radiology and Dermatology at Yale School of Medicine, Dr. Wilson specializes in treating patients with cutaneous lymphoma and breast cancer. In addition, he serves as Executive Vice Chairman and Director of Clinical Affairs for the Department of Therapeutic Radiology. He was the inaugural recipient of the David J. Leffell, MD Prize for Clinical Excellence and is a past recipient of the Francis Gilman Blake Award



[Read More](#)

More Than 2,000 People Participate in This Year's Closer to Free Ride



[Read More](#)

Meet Dr. Harriet Kluger



[Watch Now](#)

Registered Dietitians Are Critical Part of Cancer Care at Smilow Cancer Hospital



[Read More](#)

Dr. Daniel Petrylak Shares Why He Works in Cancer Research



for teaching at Yale School of Medicine. In 2011, he was named a Fellow of the American Society for Radiation Oncology (ASTRO).

Dr. Wilson is a graduate of Denison University and earned his master's in public health in health services administration from Yale School of Public Health before obtaining his medical degree at George Washington University School of Medicine. He completed his residency at Yale New Haven Hospital and served as Chief Resident before joining the faculty in 1994.

Please join us in thanking James B. Yu, MD, MHS, for his leadership and service to Smilow Cancer Hospital in the position of Associate Chief Medical Officer for Radiation Oncology over the last year. Dr. Yu has announced that he will be leaving Yale School of Medicine and Smilow Cancer Hospital at the end of the year to pursue another career opportunity. We wish Dr. Yu all the best in his next endeavors, and look forward to working closely with Dr. Wilson in his new leadership role.

Margaret Gilshannon, MHA, Promoted to Deputy Director for Finance & Administration

We are pleased to announce that Margaret Gilshannon, MHA, has been promoted to Deputy Director for Finance & Administration for Yale Cancer Center. Margaret first joined Yale Cancer Center a year ago as Senior Director of Finance & Administration, while also leading the Integrated Business Operations for the Department of Pathology, and she has been a tremendous asset for Yale Cancer Center's business and research operations, as well as our administrative support structures over the past year.



Margaret's new position will be effective October 1. As Deputy Director for Finance & Administration for Yale Cancer Center, she will oversee the management of the clinical operations, business operations and finance, administration, research management, and clinical trials management for Yale Cancer Center. In addition, Margaret will work together with our leadership team to further develop our strategic planning process for the Center.


Ansley Roche, MD joins Head and Neck Cancers Program

Ansley Roche, MD, has been appointed an Assistant Professor of Surgery (Otolaryngology). Dr. Roche cares for patients with head and neck cancers in New Haven and at the Smilow Cancer Hospital Care Center in Trumbull. Dr. Roche was previously an Assistant Professor in the Department of Otolaryngology –



I was always interested in diseases that had no cure or little cure, and oncology, with all of its terrible diseases and human suffering, seemed to me to be the best medical specialty to apply laboratory work to improve patient care.

DANIEL PETRYLAK, MD
#ThisIsWhy #NothingWillStopUs

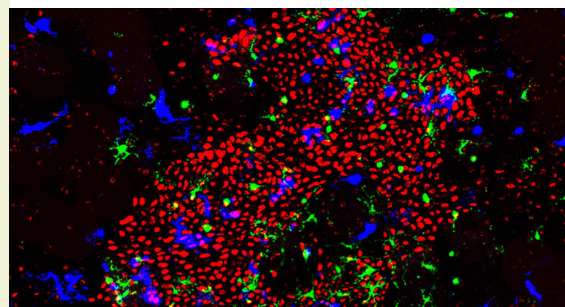


YaleNewHavenHealth
Smilow Cancer Hospital

Yale CANCER CENTER
A Comprehensive Cancer Center Designated by the National Cancer Institute

[Read More](#)

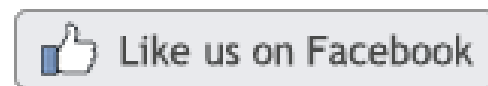
Exposing a Cellular Double Agent That Helps Skin Cancer Take Hold



[Read More](#)



Join Smilow Cancer Hospital on Facebook



Prostate Cancer Event



TUESDAY, SEPTEMBER 28 | 7:00PM

Prostate Cancer

TUE, SEP 28 AT 7 PM EDT
Smilow Shares: Prostate Cancer
1 Going · 6 Interested

[Read More](#)

Our amazing team from our Smilow Cancer Hospital Care Center in Torrington

Head and Neck Surgery at Zucker School of Medicine, Northwell Health, and was Director of Head and Neck Cancer at Staten Island University Hospital. Her current research is focused on tracheostomy and laryngectomy education and looking at laparoscopically harvested omental free tissue autograft to bypass the blood brain barrier in recurrent glioblastoma multiforme.



Dr. Roche received her medical degree from Tulane University School of Medicine and completed a fellowship in Head & Neck Microvascular Surgery and Thyroid/Parathyroid Surgery at the Mount Sinai Beth Israel Institute for Head, Neck, and Thyroid Cancer.

Shannon Mazur, DO, MA, Joins Psycho-Oncology Program

We are pleased to announce that Shannon Mazur, DO, MA, who recently completed her psychiatry fellowship in Consultation-Liaison Medicine at Yale, has been appointed Assistant Professor of Psychiatry (Psychological Medicine). Dr. Mazur received her medical degree from Northwestern University in Chicago, IL, and completed her psychiatry residency training at the University of Massachusetts Medical School – Baystate Medical Center. Prior to medical school, Dr. Mazur obtained a master's degree in Applied Philosophy and Biomedical Ethics from Loyola University of Chicago. Following graduation, she taught ethics at several local Chicago universities. During this time, she was significantly involved in a Chicago-based hospice organization, which served as the foundation for Dr. Mazur's interest in providing compassionate care to patients affected by cancer and blood diseases.



In 2020, Dr. Mazur received the William Webb Fellowship award from the Academy of Consultation-Liaison Psychiatry (ACLP). It is one of the highest honors bestowed upon a trainee by the Academy. She serves as a Co-chair for the ACLP Bioethics Special Interest Group and is a member of their Standards and Ethics Committee. In addition, Dr. Mazur is a member of the Yale New Haven Hospital Adult Ethics Committee. Her research has focused on end-of-life care, bioethics, and decision-making capacity.

Notables

Suchitra Krishnan-Sarin, PhD, Professor of Psychiatry and a member of

volunteered to help and participated in the Tour of Litchfield Hills last month, which raised funds to benefit the Cancer Care Fund of Litchfield Hills and supports cancer patients and their families throughout Litchfield County. Thank you to all of the riders, volunteers, and donors who came together to raise over \$100,000 for the fund this year!



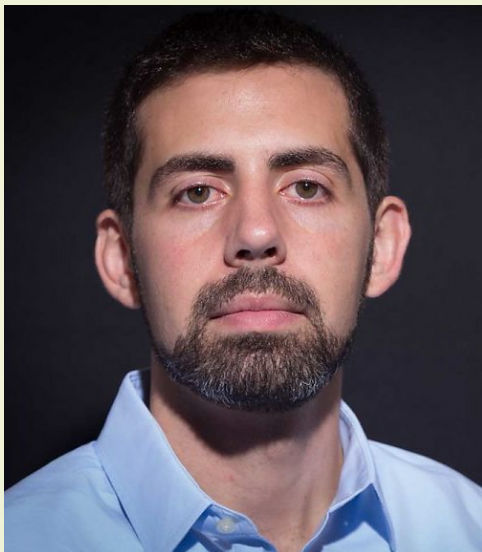
Read More

The inaugural awardees of the JH Milstone Fund are Matthew McConnell, MD, Instructor of Medicine (Digestive Diseases), and Sean Gu, MD/PhD, Clinical Fellow in the Department of Laboratory Medicine. The JH Milstone Fund was established to support early-stage investigators and innovative research and education in thrombosis, thrombolysis, and hemostasis in memory of JH Milstone, MD, by his son, Leonard M. Milstone, MD '70, Professor Emeritus of Dermatology, and daughter-in-law, Ellen B. Milstone, MD '69.

Congratulations, Matthew McConnell, MD, and Sean Gu, MD/PhD, Inaugural Awardees of the JH Milstone Fund

Yale Cancer Center's Cancer Prevention and Control Research Program, has been appointed to serve on the steering committee of the new **American Association for Cancer Research Cancer Prevention Working Group**, which is dedicated to supporting cancer prevention research.

The **Genetics, Genomics and Epigenetics Research Program** welcomes **Jason Sheltzer, PhD**, Assistant Professor of Surgery (Surgical Oncology). Dr. Sheltzer's research focuses on understanding how cancers co-opt and corrupt the mitotic cell cycle, which is highly relevant for developing new therapies and better prognostic tests for cancer. He is particularly interested in elucidating the role of genomic instability and chromosome mis-segregation in cancer development. His lab is applying a variety of techniques, including CRISPR mutagenesis, chromosome engineering, and single-cell sequencing, to interrogate mitosis and mitotic errors during tumorigenesis.



Nominations Open for Annual Awards

Yale Cancer Center is pleased to announce our call for nominations for our annual awards in the areas of excellence in research, teaching, mentorship, and clinical care. Each award winner will be announced at the Yale Cancer Center Conclave in January (date TBD). The nomination deadline for all awards (unless otherwise noted) is November 1, 2021.

Yale Cancer Center Research Prizes: Research Prizes will be awarded in support of excellence in the areas of basic science, clinical science, translational science, and population science. Awards will be chosen in each area to recognize a paper that is considered to have had the greatest impact on the field this year. The nominee must be a current member of Yale Cancer Center, and the science in the publication must be cancer-focused. To be eligible, the nominee must also be either the first or last author of the publication. Please submit a PDF of the publication (publication date must be between October 2020 to October 2021) along with the category it should be considered for via email to **Anna Raso**.

Yale Cancer Center Award for Clinical Excellence: This award will be given to the physician who best exemplifies excellence in clinical care including outstanding clinical skills, use of a patient- and family-centered approach to care, and inclusion of a multi-disciplinary care model. Nominee must be a current member of Yale Cancer Center. Please nominate outstanding candidates and send a brief nomination letter (one-page maximum) via email to **Anna Raso**.

Yale Cancer Center Award for Mentorship Excellence: This award will be given to the faculty member who best exemplifies excellence in mentorship by providing ongoing feedback and support, serving as a role model to their mentee(s), inspiring them in their passion for cancer care or for their specific



[Read More](#)

Join Yale Cancer Answers to hear from Smilow Cancer Hospital gynecologic oncologist Dr. Vaagn Andikyan speaking in honor of Ovarian Cancer Awareness Month. Listen on Connecticut Public Radio or download our podcast from iTunes.



[Read More](#)

Lawrence + Memorial (L+M) Hospital has received full accreditation from the Commission on Cancer (CoC) with four commendations. Thank you to the extraordinary leadership of Mary Ann Nash, MBA, MS, RD, CSO, Administrative Director, Oncology Services, and the entire physician, nursing, and supportive care team at our Smilow Cancer Hospital Care Center in Waterford for their incredible support through this process. The Cancer Program at L+M has now achieved 23 years of accreditation!



field of study, providing opportunities and resources for mentee(s) to advance their careers, and encouraging their mentee(s) to grow, strive for excellence, and achieve their full potential. Nominee must be a current member of Yale Cancer Center. Please nominate outstanding candidates and send a brief nomination letter (one-page maximum) via email to **Anna Raso**.

Yale Cancer Center Award for Teaching Excellence: This award will be given to the faculty member who best exemplifies excellence in teaching by ensuring their trainee(s) acquire the skills they need to develop as outstanding health practitioners, scientists, and/or researchers, providing ongoing feedback, inspiring passion for cancer care or for their specific field of study, explaining difficult concepts in innovative and creative ways, and stimulating excitement, debate, and critical and independent thinking. Nominee must be a current member of Yale Cancer Center. Please nominate outstanding candidates and send a brief nomination letter (one-page maximum) via email to **Anna Raso**.

Yale Cancer Center Lifetime Achievement Award: Yale Cancer Center recognizes the achievements of one of our senior members through our annual Lifetime Achievement award. Nominee must be a current member of Yale Cancer Center. Please send nomination suggestions for the award via email to **Anna Raso**.

Ruth McCorkle Oncology Advanced Practice Provider Award: This annual award from Yale Cancer Center/Smilow Cancer Hospital recognizes the contributions of our Nurse Practitioner and Physician Assistant colleagues who contribute so much to oncology patient care. Please consider nominating yourself or a colleague for this award. Nominations are due for the Ruth McCorkle Award to J.C. Carley by **November 30, 2021**.

[Link to Nomination Form](#)

NCI Global Oncology Survey

The Yale Cancer Center Office of Research Affairs needs your help to complete the 2021 NCI Global Oncology Survey, which informs the NCI of our Center's accomplishments in this domain. The annual survey of NCI-designated Cancer Centers is led by the NCI Center for Global Health. The objective of the survey is to create a tool for cancer centers and collaborating institutions to learn about projects with global collaborators, find new areas for global oncology collaboration, reduce duplicate efforts, and identify gaps in global cancer research and training activities.

Global oncology projects are broadly defined and include:

- Cancer research involving a collaborator outside of the United States
- Education or mentoring of foreign cancer researchers or practitioners, whether occurring here or in a foreign country.
- Research, training, or capacity building in foreign countries, especially, but not limited to, low and middle-income countries (LMIC).

Please use this link to provide Yale Cancer Center with information about your projects. These projects can be funded by any source: **Yale Cancer**

Center Global Oncology Survey

Diversity, Equity, and Inclusion

**Lawrence + Memorial Hospital
receives full accreditation from the
Commission on Cancer (CoC)
with four commendations**

YaleNewHavenHealth
Smilow Cancer Hospital

Yale
CANCER
CENTER
A Comprehensive Cancer Center Designated
by the National Cancer Institute

[Read More](#)

In honor of Prostate Cancer Awareness Month, Rodney Staggers shares his story behind why he made an appointment to get screened for prostate cancer and why he feels it is so important for others to do the same.



[Read More](#)

"Cancer research provides continuous challenges and opportunities to learn, and to improve the lives of patients worldwide," Dr. Elizabeth Prsic, Director of Adult Inpatient Palliative Care at Smilow Cancer Hospital.



[Read More](#)

Combining the resources of Smilow Cancer Hospital and Yale New Haven Children's

Hospital, our dedicated pediatric hematologists and oncologists provide care for children with all forms of cancer and blood diseases, including leukemia, malignant tumors and lymphomas, as well as sickle cell disease, hemophilia, coagulation

Workday Gender Record

Please make sure your gender is accurately recorded in Workday. Ensuring the accuracy of this section helps the university assess diversity more accurately. To update your gender in Workday: From your Workday home page click on "Personal Information" in the box of "Applications." In the left-hand column under "Change" select "Personal Information." Your chosen gender should be the first item on the list.

Faculty Diversity Resource

Yale University has an institutional membership at the **National Center for Faculty Development & Diversity**. Membership includes access to additional resources to mentoring, tools, and support to help you thrive in the Academy.

ECOG-ACRIN Networking Event for Women

The ECOG-ACRIN Task Force on Women will host a networking event for women during the virtual ECOG-ACRIN Fall 2021 Group Meeting October 20-22, 2021. The virtual meeting will provide an opportunity for a breakout networking session. For more information on the meeting and the session, please email gmp@ecog-acrin.org.

Employee Profile: Lauren Fisher, RN

Lauren Fisher is a registered nurse on NP 15, a surgical oncology floor where patients recover from their cancer surgeries. It can be an especially difficult environment emotionally, but like most everyone who works on the 15th floor, Lauren loves it.



Lauren has worked at Smilow since graduating from UConn Nursing School two years ago. Patients with all types of oncologic disease recover on this floor and stay anywhere from a day or two up to a month. Longer stays naturally foster deep connections between patients and staff, which Lauren loves, but at times it can be tough.

“Everyone here truly cares about the patients and if I ever had a family member to be cared for, I would want them to be treated at Smilow,” she says. “Patients feel safe, loved, and they leave happy.”

Cara Henderson, RN, MSN, CMSRN, CNML, Patient Services Manager for Inpatient Surgical Oncology on NP 15 says, “Lauren has exceeded my expectations as a clinician, and she effortlessly supports the patient’s mental and physical wellbeing. Lauren is repeatedly recognized by her peers, patients, families and providers for being outstanding.”

Lauren showed this to be true on a recent beach vacation. On her family’s

disease, hemophilia, coagulation abnormalities and platelet disorders. Our multidisciplinary team of physicians in pediatrics, laboratory medicine, surgery, neurosurgery, orthopedics, pathology, therapeutic radiology, and diagnostic radiology work together on a case-by-case basis to treat each child.

Our Pediatric Hematology and Oncology Program also works cooperatively with other academic health centers to conduct large-scale studies via Children’s Oncology Group (COG). Because childhood cancer is relatively rare, medical centers must work together to compile enough data, and our participation in COG makes it possible to provide the most current and advanced treatment regimens to children with any form of cancer, common or rare.

Efforts such as these over the last 60 years have yielded dramatic increases in cure rates of pediatric cancers, such as lymphocytic leukemia in which 80% of children are cured. On the other hand, we still have a long way to go in many different tumors. Smilow Cancer Hospital treats 80-100 newly-diagnosed pediatric cancer patients annually, and our goal is to place as many of these patients onto clinical trials as is possible.



[Read More](#)

Meet Robert, a 54-year old male who was diagnosed with localized prostate cancer

earlier this year. Thanks to his required physical needed to renew his Connecticut commercial driver’s license (CDL), his cancer was caught early. Because Robert’s cancer had not spread, he had two treatment options: radiation or a prostatectomy, which is a complete removal of the prostate. Robert

Lauren showed this to be true on a recent beach vacation. On her family's very last day at the beach, there was a call for medical assistance – someone yelled 911, requesting attention for a man lying in the sand at the edge of the water. Lauren and others pulled him back away from the waves, and his face was very pale, he was unresponsive, and no pulse was detected. Immediately she directed the lifeguard to get the AED and meanwhile, a female who was in EMT school stood by while Lauren did compressions. The AED arrived and Lauren, having basic life support training, was able to administer a shock to the man. It was difficult to hear the machine over the sound of the waves, but as she waited for the next analysis reading, his pulse became stronger, and he began to come to. An ambulance and EMTs arrived and took over from there.

The man was taken away to the hospital, and others in the group who observed started to ask Lauren for advice on how to perform CPR – that it would be a great skill to have at home. Lauren was relieved to have had the training to help this man until the ambulance arrived. She returned to her family and began to wind down from the adrenaline rush. A few hours later, the EMTs returned and shared that she saved the man's life. He had no known heart issues and he received a stent later that day.

At work, Lauren is frequently asked by patients if she enjoys her job. One patient asked her this recently and Lauren responded, "I do it to help people however I can, yes I love my job." He replied, "I can tell."

Recent Publications

Chow RD.

On the Absence of Sound.

J Clin Oncol. 2021;JCO2101833.

[Read More](#)

Bergholtz, H., Carter, J. M., Cesano, A., Cheang, M., Church, S. E., Divakar, P., Fuhrman, C. A., Goel, S., Gong, J., Guerriero, J. L., Hoang, M. L., Hwang, E. S., Kuasne, H., Lee, J., Liang, Y., Mittendorf, E. A., Perez, J., Prat, A., Pusztai, L., Reeves, J. W.

Best Practices for Spatial Profiling for Breast Cancer Research with the GeoMx[®] Digital Spatial Profiler.

Cancers, 13(17), 4456.

[Read More](#)

Soble W, Tymon-Rosario J, Huang G.

High-risk Endometrial Cancer: The Present and Future of Adjuvant Therapy.

touchREVIEWS in Oncology & Haematology. 2021;17(1):23-27

[Read More](#)

Basu, S. S. , Stopka, S. A., Abdelmoula, W. M., Randall, E. C., Gimenez-Cassina Lopez, B., Regan, M. S., Calligaris, D., Lu, F. F., Norton, I., Mallory, M. A., Santagata, S., Dillon, D. A., Golshan, M., & Agar, N.


Interim clinical trial analysis of intraoperative mass spectrometry for breast cancer surgery.

NPJ breast cancer, 7(1), 116.

[Read More](#)

is a complete removal of the prostate. Robert chose surgery, and he soon learned he would be the first patient to undergo a robotic prostatectomy using Westerly Hospital's new daVinci XI surgical robot system. Rob underwent a successful 3 ½ hour surgery. He was in the hospital for one night and was walking slow laps around the nurses station the next day.

"For patients like Robert, with the da Vinci XI robotic system, we are able to perform safer surgeries with smaller incisions, improving recovery time, and getting patients home faster," said Dr. Joseph Renzulli, Associate Professor of Urology at Yale Urology and Chief of Urology at Westerly Hospital. "The Yale Urology team is extremely excited to have brought our expertise in robotic surgeries to Westerly Hospital, enhancing the available treatment options for all residents of Rhode Island and neighboring communities."



*Meet Robert,
Prostate
Cancer
Survivor*

"I never minded having to do the regular CDL physicals for my license, but after this experience, I am so grateful that it caught the cancer. I'm only 54 and I still have a lot of life to live."

YaleNewHavenHealth
Smilow Cancer Hospital

Yale
CANCER
CENTER
A Comprehensive Cancer Center Endorsed by the National Cancer Institute

[Read More](#)

Follow Yale Cancer Center on Twitter

Follow us on 



Thank you to Dr. Philip Castle, @NCICastle for an outstanding

Grand Rounds overview on #cancerprevention



Join us at Noon today for Yale Cancer Center's virtual Grand Rounds. @theNCI's Dr. Philip Castle will discuss "At a Glance: NCI's Division of Cancer Prevention."

[Read More](#)

Qing T, Wang X, Jun T, Ding L, Pusztai L, Huang K.

Genomic Determinants of Homologous Recombination Deficiency across Human Cancers.

Cancers. 2021; 13(18):4572.

[Read More](#)

Symmans WF, Yau C, Chen Y, Balassanian R, Klein ME, Pusztai L, Nanda R, Parker BA, Batnow B...Esserman LJ.

Assessment of Residual Cancer Burden and Event-Free Survival in Neoadjuvant Treatment for High-risk Breast Cancer

JAMA Oncol. Published online September 16, 2021.

doi:10.1001/jamaoncol.2021.3690

[Read More](#)

Vathiotis, I. A., Moutafi, M. K., Divakar, P., Aung, T. N., Qing, T., Fernandez, A., Yaghoobi, V., El-Abed, S., Wang, Y., Guillaume, S., Nuciforo, P., Huober, J., Di Cosimo, S., Kim, S. B., Harbeck, N., Gomez, H., Shafi, S., Syrigos, K. N., Fountzilas, G., Sotiriou, C., ... Rimm, D. L.

Alpha-smooth muscle actin expression in the stroma predicts resistance to trastuzumab in patients with early-stage HER2-positive breast cancer.

Clinical cancer research : an official journal of the American Association for Cancer Research.

clincanres.2103.2021. Advance online publication.

[Read More](#)

Doroshov, D. B., Wei, W., Gupta, S., Zugazagoitia, J., Robbins, C., Adamson, B., & Rimm, D. L.

Programmed Death-Ligand 1 Tumor Proportion Score and Overall Survival From First-Line Pembrolizumab in Patients With Nonsquamous Versus Squamous NSCLC.

Journal of thoracic oncology : official publication of the International Association for the Study of Lung Cancer.

S1556-0864(21)02392-3. Advance online publication.

[Read More](#)

Farahmand, S., Fernandez, A. I., Ahmed, F. S., Rimm, D. L., Chuang, J. H., Reisenbichler, E., & Zarringhalam, K.

Deep learning trained on hematoxylin and eosin tumor region of Interest predicts HER2 status and trastuzumab treatment response in HER2+ breast cancer.

Modern pathology : an official journal of the United States and Canadian Academy of Pathology, Inc.

10.1038/s41379-021-00911-w. Advance online publication.

[Read More](#)

Shammas, R. L., Fish, L. J., Sergesketter, A. R., Offodile, A. C., 2nd, Phillips, B. T., Oshima, S., Lee, C. N., Hollenbeck, S. T., & Greenup, R. A.

ASO Visual Abstract: Dissatisfaction After Post-Mastectomy Breast Reconstruction: A Mixed-Methods Study.

Annals of surgical oncology, 10.1245/s10434-021-10779-4.

[Read More](#)

Paolotti C, Barlow W E, Cobain E E, Bergqvist M, Mohr B S

[Cancer Prevention](#).



Congratulations to Dr. Suchitra Krishnan-Sarin named to the steering committee of the @AACR Cancer Prevention Working Group.



New research in @NatureComms led by @MathieuBakhoum identified a novel molecular mechanism driving the spread of uveal melanoma, a often deadly #eyecancer in adults.



Research by @MehraGolshan & colleagues shows using ambient mass spectrometry (MS) in the OR to analyze breast cancer tissue & surgical margins may be a promising tool for surgical guidance in #breastcancer.



Working in the lab since the age of 16, @danielpetrylak discovered he wanted to pursue oncology, a specialty with tremendous need where he could apply his lab work and improve patient care.



New research in @PNASNews led by Dr. Michael Girardi may offer new treatment pathways for people who are most at risk for #skincancer.



Take a moment to read @ScienceChow's powerful perspective in @ASCO_pubs "On the Absence of Sound"



Congratulations to @NavidHafez awarded a @bmsnews National Medical Fellowship Diversity in Clinical Trials Career Development Program grant to advance health equity through research and mentoring.



New research by @JoshiLabyale, @KelliAConnolly & KrishnaswamyLab out today in

@SciImmunology shows certain stem-like T cells could aid #immunotherapy in #cancer treatment.



A #gynpath in @yalepathology, Dr. Natalia Buza helped identify a treatment for an aggressive #endometrialcancer. She encourages those from diverse backgrounds to pursue

Paolletti, C., Barlow, W. E., Cobain, E. P., Bergqvist, M., Menta, R. S., Gralow, J. R., Hortobagyi, G. N., Albain, K. S., Pusztai, L., Sharma, P., Godwin, A. K., Thompson, A. M., Hayes, D. F., & Rae, J. M.

Evaluating Serum Thymidine Kinase 1 in Hormone Receptor Positive Metastatic Breast Cancer Patients Receiving First Line Endocrine Therapy in the SWOG S0226 Trial.

Clinical cancer research : an official journal of the American Association for Cancer Research, clincanres.1562.2021.

[Read More](#)

Chen, J. F., & Yan, Q.

The roles of epigenetics in cancer progression and metastasis.

The Biochemical journal, 478(17), 3373–3393.

[Read More](#)

Preclinical Models for the Study of Lung Cancer Pathogenesis and Therapy Development.

Cold Spring Harbor perspectives in medicine, a037820.

[Read More](#)

Porciuncula, A., Morgado, M., Gupta, R., Syrigos, K., Meehan, R., Zacharek, S. J., Frederick, J. P., & Schalper, K. A.

Spatial mapping and immunomodulatory role of the OX40/OX40L pathway in human non-small cell lung cancer.

Clinical cancer research : an official journal of the American Association for Cancer Research

clincanres.0987.2021.

[Read More](#)

King, A., & Fucito, L.

Cigarette Smoking and Heavy Alcohol Drinking: The Challenges and Opportunities for Combination Treatments.

The American journal of psychiatry, 178(9), 783–785.

[Read More](#)

Pacak, K., Kidd, M., Meuter, L., & Modlin, I. M.

A Novel Liquid Biopsy (NETest) identifies Paragangliomas and Pheochromocytomas with High Accuracy.

Endocrine-related cancer, ERC-21-0216.R1. Advance online publication.

[Read More](#)

Peters, G. W., Gao, S. J., Knowlton, C., Zhang, A., Evans, S. B., Higgins, S., Wilson, L. D., Saltmarsh, N., Picone, M., & Moran, M. S.

Benefit of Deep Inspiratory Breath Hold for Right Breast Cancer When Regional Lymph Nodes Are Irradiated.

Practical radiation oncology, S1879-8500(21)00226-5.

[Read More](#)

Deng, H., Min, E., Baeyens, N., Coon, B. G., Hu, R., Zhuang, Z. W., Chen, M., Huang, B., Afolabi, T., Zarkada, G., Acheampong, A., McEntee, K., Eichmann, A., Liu, F., Su, B., Simons, M., & Schwartz, M. A.

Activation of Smad2/3 signaling by low fluid shear stress mediates artery inward remodeling.

Proceedings of the National Academy of Sciences of the United States of America, 118(27), e2105220118.

from diverse backgrounds to pursue
#cancerresearch.

Calendar

Yale Cancer Answers

September 19; 7:30 PM

NPR

Prostate Cancer Diagnosis and Prognosis:

Histopathology

Peter Humphrey, MD, PhD

[Learn More](#)

Women in Medicine: Negotiation

Workshop

September 21; 9:30 AM

Anees Chagpar, MD

[Learn More](#)

Yale Cancer Center Grand Rounds

September 21; 12:00 PM

Bioadhesive Nanoparticles for Skin Cancer Treatment and Prevention

Michael Girardi, MD, FAAD and W. Mark

Saltzman, PhD

[Learn More](#)

Digestive Diseases Research Seminar

September 21; 5:00 PM

Caroline Johnson, PhD

[Learn More](#)

Smilow Shares

September 21; 7:00PM

Understanding Lymphoma and New Treatment Advances

Francine Foss, MD, Francesca Montanari,

MD, and M. Sung Lee, MD

[Learn More](#)

Grand Rounds for Non-Clinicians

September 22; 12:00 PM

[Learn More](#)

Pathology Grand Rounds

September 23; 12:30 PM

Becoming an Intentional Mentor in STEMM

Antentor Hinton, Jr., PhD

[Learn More](#)

Cancer Genetics and Prevention Program

September 23; 2:30 PM

[Learn More](#)

[Read More](#)

Johnson, C. H., Golla, J. P., Dioletis, E., Singh, S., Ishii, M., Charkoftaki, G., Thompson, D. C., & Vasiliou, V.

Molecular Mechanisms of Alcohol-Induced Colorectal Carcinogenesis.
Cancers, 13(17), 4404.

[Read More](#)

Gowda, L., & Seropian, S.

Life Expectancy After Allogeneic Stem Cell Transplant-In It for the Long Haul?

JAMA oncology, 10.1001/jamaoncol.2021.3674.

[Read More](#)

Robles-Oteiza, C., Ayeni, D., Levy, S., Homer, R. J., Kaech, S. M., & Politi, K.

Elevated murine HB-EGF confers sensitivity to diphtheria toxin in EGFR-mutant lung adenocarcinoma.

Disease models & mechanisms, dmm.049072.

[Read More](#)

Funding and Award Opportunities

National Comprehensive Cancer Network & Eli Lilly Biomarker Driven Therapy in Lung and Thyroid Cancers

The NCCN and Eli Lilly are seeking proposals to improve patient care and outcomes in lung and thyroid cancers. Multiple factors contribute to the complexity of treating these diseases, including stage and histology, personalization of systemic therapy based on molecular profiles, patient factors, and therapeutic landscape.

Application Deadline: September 28, 2021

[Read More](#)

Cancer Research Institute Irvington Postdoctoral Fellowship Program

Supports qualified young scientists at leading universities and research centers around the world who wish to receive training in fundamental immunology or cancer immunology. Proposals should include studies that directly impact our understanding of the immune system's role in cancer.

Application Deadline: October 1, 2021

[Read More](#)

Technology Development for Single-Molecule Protein Sequencing (R01)

This FOA solicits grant applications to catalyze major advances in single-molecule protein sequencing and single cell proteome analysis through technology development. The goal of this initiative is to achieve technological advances over the next five years that enable generation of protein sequencing data at sufficient scale, speed, cost, and accuracy to use routinely in studies of genome biology and function, and in biomedical and clinical research in general.

Application Deadline: October 1, 2021

[Read More](#)

Center for GI Cancers Weekly Seminar

September 23; 4:15 PM

[Learn More](#)

2021 RNA Center Retreat

September 24; 8:00 AM

YSB's Marsh Auditorium

Karla M Neugebauer, PhD

[Learn More](#)

Yale Cancer Answers

September 26; 7:30 PM

NPR

Thyroid Cancer Awareness Month

Grace S. Lee, MD

[Learn More](#)

Yale Cancer Center Grand Rounds

September 28; 12:00 PM

Targeting Oncometabolite-induced DNA Repair in Cancer

Juan Vasquez, MD

[Learn More](#)

Yale Cell Biology Seminar

September 28; 1:00 PM

Sorting T Cell Receptors Out and In at the Immunological Synapse

Michael Dustin, PhD

[Learn More](#)

Smilow Shares Greenwich

September 28; 7:00 PM

Prostate Cancer: Screening, Treatment, and Advances

Daniel Petrylak, Gerald Portman, MD, and Bruce McGibbon, MD

[Learn More](#)

Global Health Seminar

September 30; 12:00 PM

Climate Change and Health

Robert Dubrow, MD, PhD

[Learn More](#)

Smilow Wellness Workshop

September 30; 4:00 PM

What is the Microbiome and How Does it Make me Happy?

Joan Palmer, MS

[Learn More](#)

Center for GI Cancers Weekly Seminar

September 30; 4:15 PM

Program

Rally helps fund the most promising research initiatives, and invests in projects and innovative approaches to research which could lead to advanced studies or clinical trials.

Application Deadline: October 1, 2021

Read More

The Role of Work in Health Disparities in the U.S. (R01)

The purpose of this FOA is to support innovative population-based research that can contribute to identifying and characterizing pathways and mechanisms through which work or occupation influences health outcomes and health status among populations with health and/or health care disparities, and how work functions as a social determinant of health.

Application Deadline: October 5, 2021

Read More

Integration of Imaging and Fluid-Based Tumor Monitoring in Cancer Therapy (R01)

Through this FOA, the NCI invites R01 grant applications describing projects that integrate imaging and fluid-based tumor monitoring (liquid biopsy) assays during cancer therapy in patients to determine the optimal use of these modalities in the characterization of therapy response and/or emergence of treatment resistance.

Application Deadline: October 5, 2021

Read More

Integration of Imaging and Fluid-Based Tumor Monitoring in Cancer Therapy (R01)

Through this FOA, the NCI invites R01 grant applications describing projects that integrate imaging and fluid-based tumor monitoring (liquid biopsy) assays during cancer therapy in patients to determine the optimal use of these modalities in the characterization of therapy response and/or emergence of treatment resistance.

Application Deadline: October 5, 2021

Read More

Molecular Imaging of Inflammation in Cancer (R01)

The purpose of this FOA is to invite research grant applications (R01) for the development and use of current and emerging molecular imaging methods to gain fundamental insights into cancer inflammation *in vivo*.

Application Deadline: October 5, 2021

Read More

Cancer Target Discovery and Development (CTD2) (U01)

Through this FOA, the NCI will support the program Cancer Target Discovery and Development. CTD2 is focused on efforts that advance cancer research by bridging the knowledge gap between the large volumes of comprehensive molecular characterizations of many cancer types and studies of the underlying etiology of cancer development, progression, and/or metastasis.

Application Deadline: October 6, 2021

Read More

Melanoma Research Alliance RFPs

The MRA is pleased to announce RFPs for pre-clinical, translational, and

Submissions

Please submit your recent publications, awards, and grant announcements to:

Renee Gaudette

Director, Public Affairs and Communications

early clinical research with the potential to produce unusually high impact, near-term advancements in melanoma prevention, detection, diagnosis, staging, and treatment.

Team Science Award LOI Due: October 6, 2021

Young Investigator Award Checklist Due: November 3, 2021

Pilot Awards Due: November 3, 2021

Read More

Metabolic Dysregulation and Cancer Risk Program, Research Grants: a Transdisciplinary Approach to Obesity-Associated Research (U01)

The NCI invites research grant applications for transdisciplinary studies that will enhance our knowledge of the dynamics and underlying mechanisms that link obesity, metabolic dysregulation and increased cancer risk as part of the Metabolic Dysregulation and Cancer Risk Program. Through this FOA, the Metabolic Dysregulation and Cancer Risk Program will focus on metabolic dysregulation as the key process linking obesity with cancer risk.

Application Deadline: October 6, 2021

Read More

Coordinating Center for the Metabolic Dysregulation and Cancer Risk Program: A Transdisciplinary Approach to Obesity-Associated Cancer Research (U24)

Through this FOA, the NCI will support a Coordinating Center to facilitate coordination across the consortium of multiple individual research project grants for the Metabolic Dysregulation and Cancer Risk Program whose overarching goal is to enhance our knowledge of the dynamics, and underlying mechanisms, that link obesity, metabolic dysregulation, and increased cancer risk.

Application Deadline: October 6, 2021

Read More

Cancer Prevention-Interception Targeted Agent Discovery Program (CAP-IT) Centers (U54)

The purpose of this FOA is to solicit applications for Cancer Prevention-Interception Targeted Agent Discovery Program (CAP-IT) Centers (U54). The overall goal of the CAP-IT Program is to establish an agile and effective network infrastructure to undertake collaborative research focusing on precision cancer prevention and interception, with the overarching goal of discovering molecularly or immunologically targeted agents designed to prevent or intercept the oncogenic process in higher-risk populations.

Application Deadline: October 7, 2021

Read More

Cancer Prevention-Interception Targeted Agent Discovery Program (CAP-IT) Data and Resource Coordination Center (CAP-IT DRCC) (U24)

The purpose of this FOA is to solicit Applications for the Cancer Prevention-Interception Targeted Agent Discovery Program (CAP-IT) Data and Resource Coordination Center (CAP-IT DRCC) (U24). The overall goal of this FOA and the companion FOA (U54 CAP-IT Specialized Centers, RFA-CA-21-038) is to establish an agile and effective network infrastructure to undertake collaborative research focusing on precision cancer prevention and interception, with the overarching goal of discovering molecularly or immunologically targeted agents designed to prevent or intercept the oncogenic process in higher-risk populations.

Application Deadline: October 7, 2021

[Read More](#)

Program on the Origins of Gastroesophageal Cancers (R01)

This FOA is to request applications for the Program on the Origins of Gastroesophageal Cancers (R01). This new program will build on recent molecular classifications of gastroesophageal cancers, significant understanding of their cancer genomics, and advances in stem cell research to examine and define how these related cancers initially evolve at the cellular level.

Application Deadline: October 8, 2021

[Read More](#)

Coordinating Center for the Program on the Origins of Gastroesophageal Cancers (U24)

This FOA is to request applications for the Coordinating Center, Program on the Origins of Gastroesophageal Cancers (U24). This new program will build on recent molecular classifications of gastroesophageal cancers, significant understanding of their cancer genomics, and advances in stem cell research to examine and define how these related cancers initially evolve at the cellular level.

Application Deadline: October 8, 2021

[Read More](#)

NCI F99/K00 Predoctoral to Postdoctoral Fellow Transition Award

This award supports outstanding PhD and other Research Doctoral candidates to complete their dissertation research training (F99 phase) and transition in a timely manner to mentored, cancer-focused postdoctoral career development research positions (K00 phase).

Letter of Intent Due: October 10, 2021

[Read More](#)

NCI Mentored Clinical Scientist Research Career Development Award to Promote Diversity (K08)

The purpose of this award is to prepare individuals for careers that have a significant impact on the health-related research needs of the nation.

Application Deadline: October 12, 2021

[Read More](#)

NCI Transition Career Development Award to Promote Diversity (K22)

The purpose of this award is to assist postdoctoral fellows or individuals in equivalent positions to transition to positions of assistant professor or equivalent and initiate a successful biomedical career as an independent research scientist.

Application Deadline: October 12, 2021

[Read More](#)

AACR Anna D. Barker Basic Cancer Research Fellowship

This award supports postdoctoral or clinical research fellows to establish a successful career path in cancer research.

Application Deadline: October 14, 2021

[Read More](#)

Lustgarten Foundation-AACR Career Development Award for Pancreatic Cancer Research, in honor of Ruth Bader Ginsburg

This award has been established to honor the life and legacy of Justice

Ginsburg, who worked tirelessly to advance gender equality, even while battling pancreatic cancer. The intent of this program is to support the development and diversity of talent working in pancreatic cancer research.

Letter of Intent Due: October 18, 2021

Read More

Lustgarten Foundation-AACR Career Development Award for Pancreatic Cancer Research, in Honor of John Robert Lewis

This award has been established to honor the life and legacy of Representative Lewis, who worked tirelessly to advance the civil rights of all Americans, even while battling pancreatic cancer. The intent of this program is to support the development and diversity of talent working in pancreatic cancer research.

Letter of Intent Due: October 18, 2021

Read More

AACR-AstraZeneca Career Development Award for Physician-Scientists, in Honor of José Baselga

This award has been established to honor the life and legacy of Dr. José Baselga, who was a scientific leader and supportive mentor to an entire generation of physician-scientists. Dr. Baselga's research focused on novel molecular targeted therapeutics and he played a leading role in the clinical development of multiple cancer drugs.

Letter of Intent Due: October 19, 2021

Read More

CRI Irvington Postdoctoral Fellowship to Promote Racial Diversity

CRI invites applications from candidates who identify as Black or African American, Hispanic or Latino/a American, or American Indian or Alaska Native. CRI is seeking hypothesis-driven, mechanistic studies in both immunology and tumor immunology that aim to directly impact our understanding of the immune system's role in cancer.

Application Deadline: October 21, 2021

Read More

Women's Health Research Pilot Project Grants: Studying Women and the Influence of Sex & Gender on Health

WHRY Pilot Project Program funds studies providing new approaches to understanding the health of women, and/or the influence of sex/gender differences on health. Studies that advance our understanding of sex or gender in addressing the coronavirus pandemic will also be reviewed for funding.

Letters of Intent Due: October 21, 2021

Read More

National Cancer Institute Youth Enjoy Science Research Education Program (R25)

The NIH Research Education Program (R25) supports research education activities in the mission areas of the NIH. The overarching goal of this R25 program is to support educational activities that encourage individuals from diverse backgrounds, including those from groups underrepresented in the biomedical and behavioral sciences, to pursue further studies or careers in research.

Application Deadline: October 28, 2021

Read More

Debbie's Dream Foundation Career Development Award for Gastric Cancer Research

This award supports junior faculty to conduct gastric cancer research and to establish a successful career path in this field.

Application Deadline: October 28, 2021

Read More

Research Supplements to Promote Re-Entry and Re-integration into Health-Related Research Careers

The goal of this program is to provide support for a mentored research training experience for individuals with high potential to re-enter or re-integrate into an active research career, after an interruption for family responsibilities or other qualifying circumstances.

First Available Due Date: November 1, 2021

Read More

Radiation Oncology-Biology Integration Network (ROBIN) Centers (U54)

The purpose of this FOA is to solicit applications for U54 Research Centers to form the Radiation Oncology-Biology Integration Network (ROBIN). The cadre of ROBIN Centers created through this FOA will establish an agile and effective national radiation oncology network infrastructure that collectively address critical hypothesis-based translational research knowledge gaps on the biological basis of responses in cancer patients who undergo radiation treatments.

Application Deadline: November 1, 2021

Read More

Acquired Resistance to Therapy Network (ARTNet; U54)

The ARTNet FOA is a new funding opportunity that builds upon the Drug Resistance and Sensitivity Network (DRSN, RFA-CA-17-009) to focus study on the mechanistic basis of acquired resistance to cancer therapies and disease recurrence.

Application Deadline: November 1, 2021

Read More

Coordinating and Data Management Center for Acquired Resistance to Therapy Network (ARTNet; U24)

The overarching goal of the ARTNet is to bridge basic, pre-clinical, and translational research along the tumor-tumor microenvironment continuum to inform new strategies that can be better translated to overcome significant challenges in acquired resistance to cancer therapies. The Coordinating Center will assemble the appropriate infrastructure to facilitate and implement the administrative, outreach, collaborative, and data management activities of the ARTNet.

Application Deadline: November 1, 2021

Read More

Cancer Research Institute Clinical and Laboratory Integration Program (CLIP) Immunotherapy

CLIP supports pre-clinical and translational research that can be directly applied to optimizing cancer immunotherapy in the clinic. CLIP grants are awarded to qualified scientists exploring clinically relevant questions aimed at improving the effectiveness of cancer immunotherapies.

Letter of Intent Due: November 1, 2021

[Read More](#)

Pancreatic Ductal Adenocarcinoma (PDAC) Stromal Reprogramming Consortium (PSRC) (U01)

The purpose of this FOA is to solicit applications for U01 Research Projects to form the NCI-led PDAC Stromal Reprogramming Consortium (PSRC). The overarching objective of the PSRC is to develop a comprehensive understanding of PDAC tumor progression, its microenvironment (TME) as a tumor fate determinant and the reciprocal tumor-TME interactions that drive clinical outcomes.

Application Deadline: November 1, 2021

[Read More](#)

NCI Research Specialist Awards (Laboratory-based Scientist) Award (R50)

This FOA invites grant applications for the Research Specialist Award (R50) in any area of NCI-funded cancer research. This FOA is specifically for laboratory-based scientists and is designed to encourage the development of stable research career opportunities for exceptional scientists who want to continue to pursue research within the context of an existing NCI-funded basic, translational, clinical, or population science cancer research program, but not serve as independent investigators.

Application Deadline: November 1, 2021

[Read More](#)

NCI Research Specialist (Core-based Scientist) Award (R50)

This FOA invites grant applications for the Research Specialist Award (R50) in any area of NCI-funded cancer research. This FOA is specifically for core/shared resource/central scientific support scientists and is designed to encourage the development of stable research career opportunities for exceptional scientists who want to continue to pursue research within the context of an existing NCI-funded basic, translational, clinical, or population science cancer research program, but not serve as independent investigators.

Application Deadline: November 1, 2021

[Read More](#)

Research Centers for Cancer Systems Biology (U54)

The NCI supports the application of systems biology approaches to cancer research through the CSBC. The CSBC includes U01 Research Projects and, through this FOA, U54 Research Centers. These multi-project Research Centers should address challenges in basic cancer biology that require a coordinated systems biology approach.

Application Deadline: November 12, 2021

[Read More](#)

Mobile Health: Technology and Outcomes in Low- and Middle-Income Countries (R21/R33)

The overall goal of the program is to catalyze innovation through multidisciplinary research that addresses global health problems, develop an evidence base for the use of mHealth technology to improve clinical and public health outcomes, and strengthen mHealth research capacity in LMICs.

Application Deadline: November 15, 2021

[Read More](#)

Cancer Research Institute Technology Impact Award

These grants aim to encourage collaboration between technology developers and clinical cancer immunologists and to generate the proof-of-principle of a novel platform technology in bioinformatics, ex vivo or in silico modeling systems, immunological or tumor profiling instrumentation, methods, reagents and assays, or other relevant technologies that can enable clinician scientists to generate deeper insights into the mechanisms of action of effective or ineffective cancer immunotherapies.

Letter of Intent Due: November 15, 2021

[Read More](#)

Understanding Oral HPV Infection, Acquisition, and Persistence in People Living with HIV (R01, R21)

The purpose of these FOAs are to solicit research to better understand the epidemiology and biology of oral HPV infection, its acquisition and persistence, in people living with HIV and elucidate the initial mechanisms related to HPV-associated oral and oropharyngeal cancers and warts in the context of HIV.

Application Deadline: November 18, 2021

[Read More](#)

The Hope Foundation for Cancer Research SEED Fund for SWOG Early Exploration and Development 2021

These awards may assist investigators with projects that support the following types of studies: pre-clinical data, secondary data analysis from clinical trials, pilot and feasibility studies (including early stage clinical trials), small, self-contained research projects, or development of research methodology/technology. \$50,000

Application Deadline: December 1, 2021

[Read More](#)