

# DirectConnect

Inside Yale Cancer Center

February 23, 2018

## Announcements

### U.S. News Best Hospitals

Please support our institution by participating in this year's [Doximity](#) survey for U.S. News & World Report's annual Best Hospital rankings. Online voting for reputation scores is now open. I encourage each of you to take a few minutes to vote and support cancer services at Yale New Haven Hospital. With your online vote, I hope we can continue to push our reputation score higher each year.

Please login to your Doximity account and vote through the link on the homepage. Reputation scores are averaged over three years and our score is improving; it will take several years to fully impact our reputation rankings data - I urge complete participation from all faculty and advanced practice providers. If you have any questions on the process, please contact [Renee Gaudette](#).

### Biostatistics Shared Resource

Yale Cancer Center offers biostatistics and bioinformatics support to all members/projects through the Biostatistics Shared Resource (BSR), which is led by Dr. Shuangge (Steven) Ma. Dr. Ma has over ten years of experience conducting cancer biostatistical research, including serving as co-director of the Biostatistics and Bioinformatics Core of the Yale SPORE in Skin Cancer, and is also the senior genetic statistician for the VA CT Healthcare

*from the desk of*  
**Charles S. Fuchs, MD, MPH**  
Director, Yale Cancer Center  
and Physician-in-Chief  
Smilow Cancer Hospital

Yale  
NewHaven  
**Health**  
Smilow Cancer  
Hospital

---

Yale **CANCER CENTER**  
A Comprehensive Cancer Center Designated  
by the National Cancer Institute

---

### Recent News

[News Center >>](#)

### LATEST ARTICLES:

System. YCC members are eligible to receive up to 16 hours per year of service at no cost. As funding agencies and journals continue to place increasing emphasis on proper analytics, it is critical to involve statisticians early on and in all stages of your study. Whenever you have a new project or idea, [Dr. Ma](#) urges you to contact him and he will introduce you to the appropriate faculty or staff at the BSR so that you can take advantage of their expertise and your YCC member benefit.

The BSR is happy to re-announce its drop-in consultation service. Dr. Wei Wei, an experienced statistician with special expertise in clinical trial design and analysis and general analytics, provides on-site biostatistics support. Drs. Yong Kong and Ying Zhu, both with extensive experience in the analysis of genetic, genomic, proteomic, and epigenetic data, provide bioinformatics support.

[Learn More >>](#)

### **Biostatistics Shared Resource (BSR) Drop-In Office Hours - WWW213**

#### **Biostatistics**

Dr. Wei Wei

Thursdays - 9am-1pm

Fridays - 9am-5pm

#### **Bioinformatics**

Drs. Yong Kong and Ying Zhu

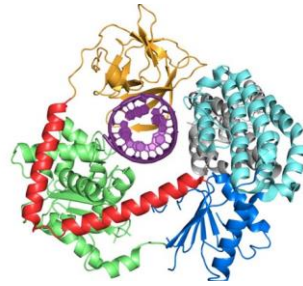
Fridays - 1pm-5pm

---

## **Notables**

**Daniel Boffa, MD**, Associate Professor of Thoracic Surgery and a member of Yale Cancer Center's Radiobiology & Radiotherapy Research Program, was recently appointed to the **Commission on Cancer**. Dr. Boffa will serve on the COC's Quality Integration Committee.

**Jason Crawford, PhD**, a member of Yale Cancer Center's Developmental Therapeutics Research Program, has been named the



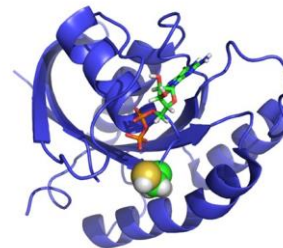
### **A Synthetic Approach to Helping the Immune System Thwart Infections**

[Read More >>](#)



### **Roberta Lombardi: Shining the Light at the End of the Tunnel**

[Read More >>](#)



### **New Technique Predicts Gene Resistance to Cancer Treatments**

[Read More >>](#)

**Maxine F. Singer '57 PhD Associate Professor of Chemistry and of Microbial Pathogenesis.**

Smilow Cancer Hospital's **Thoracic Oncology Program** members are attending and presenting at the 18th Annual **Targeted Therapies of Lung Cancer Meeting** in Santa Monica, CA this week. Co-chaired by Roy S. Herbst, MD, the meeting includes presentations from ten Yale Cancer Center faculty.

**Employee Profile: Jackie Rollin**

Jackie Rollin is a Clinical Trial Team Manager in the Phase I Program of the Clinical Trials office. She relocated from Detroit, Michigan approximately 3 years ago to help establish the Early Phase Clinical Trials Program and ever since she arrived, she has been an outstanding leader of the Phase I team.



"Jackie is a leader that her team looks up to, supports, and emulates as a manager," stated Patricia LoRusso, DO, Associate Director for Experimental Therapeutics and Phase I Disease Aligned Research Team (DART) Leader. "She puts in endless hours, is always available, and prioritizes the patients and the program."

As manager, Jackie supervises the clinical research team, which conducts the clinical trials, and shepherds studies from start up through to protocol activation. She finds that working with early phase immunotherapy oncology clinical



**Affordable Care Act Lowered Uninsured Rate for Cancer Survivors**

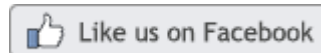
[Read More >>](#)



**The Policy, Politics & Law of Cancer**

[Read More >>](#)

**Join Yale Cancer Center on Facebook**



**LATEST POSTS:**

Spotted on one of our grateful patients today in the radiation oncology clinic at Smilow.  
#FridayFeeling

trials is incredibly exciting, as many of the trials that pass through her team will advance and may become the standard of care later down the line. Jackie's commitment to the mission of delivering novel therapies to patients is viewed by others as one of her top priorities.

In this role, Jackie has also been able to develop managerial skills that are well-received across the office, and to sponsors and leadership. Nicolette Carlino, a Clinical Research Coordinator who works directly with Jackie, says, "She has helped me grow professionally and personally, helping me list out goals and objectives, and making plans on how I can achieve my goals throughout my time here. Without this appropriate guidance and oversight, I can wholeheartedly say I wouldn't be the team member I am today."

Jackie's approach to leadership puts the needs of her team members first. "As a leader, my job is to help find and showcase talents on our team and help people shine," she says. "My strategy is to engage with my team, listen to them, and help them achieve their goals, whether that's through professional development, acquiring new certifications, advancement by promotion, or even a career change to support their interests and strengths."

Nothing is impossible for Jackie, and she realizes that vision, an open mind, and listening to her team to develop relevant approaches to problem solving are crucial to success.

## Funding Opportunities

### Pilot Funding Opportunity: American Cancer Society Institutional Research Grant

Yale Cancer Center is pleased to announce the 2018 ACS-IRG competition for Yale Assistant Professors to support innovative work in the broad fields of basic, translational, clinical, and prevention/control cancer research.

One year grants will provide up to \$30,000 for each award. YCC members and non-members are encouraged to apply.



[Read More >>](#)

We are excited to highlight Magnolia Meals at Home, a meal delivery program that helps provide nutritious foundations for patients living with breast cancer, thyroid cancer, kidney cancer, or soft tissue sarcoma and their families. This program is now available to patients in the New Haven area, and eligible participants can receive up to two months of free home meal deliveries for themselves and their family members.



Now serving Smilow patients in the New Haven area

[Read More >>](#)

Mark your calendars as we kick off the 2018 Closer to Free Ride season on March 8 from 5-8pm at Stony Creek Brewery. Whether you have already registered or are planning to sign up, this night is a great chance to re-connect with fellow Riders

#### Eligibility:

- \* Must be an Assistant Professor
- \* Must not have already received federal research grant support or a previous ACS-IRG award
- \* All applicants must identify a faculty mentor who has expertise in cancer research

**Application Due Date:** February 28, 2018

**Contact:** [Christine Holmberg](#)

#### Leslie H. Warner Postdoctoral Fellowships

- \* Fellowships to support innovative basic, translational, clinical, or population-based cancer research.
- \* Candidates may have up to one year postdoctoral experience.
- \* Not restricted to U.S. Citizens or permanent residents

Application Deadline: March 1, 2018

[Learn More >>](#)

#### Breast Cancer Alliance

The mission of the Breast Cancer Alliance is to improve survival rates and quality of life for those impacted by breast cancer through better prevention, early detection, treatment, and cure. To promote these goals, we invest in innovative research, breast surgery fellowships, regional education, dignified support, and screening for the underserved.

#### \* Exceptional Project Grants

BCA invites clinical doctors and research scientists at any stage of their careers whose primary focus is breast cancer to apply for an Exceptional Project Grant. This award recognizes creative, unique, and innovative research and is open to applicants throughout the US. This is a one-year grant for a total of \$100,000.

**Application Deadline:** March 5, 2018

[Learn More >>](#)

#### James Hudson Brown - Alexander Brown Coxe Postdoctoral Fellowships in the

and Volunteers and enjoy great food as we look forward to this year's Ride on Saturday, September 8th. Register on site to get your 2018 CTF Ride I'M IN shirt!



[Read](#)

[More >>](#)

Dr. Anees Chagpar, of the Smilow Breast Center, serves as principal investigator of a nationwide, multi-center breast cancer clinical trial called SHAVE2. This trial builds off of the influential Yale-only SHAVE trial that suggested removing a small amount of extra tissue around a breast tumor could reduce recurrence of the cancer and further surgeries.

"This was really a landmark study because ... we found that by taking a little more tissue around the cavity, we could reduce positive margin rates by 50 percent and cut the need to go back to the operating room for re-excision in half," Dr. Chagpar said in an interview with the New Haven Register.



[Read More >>](#)

Kirsty was young and had no personal history of cancer, but she decided to pursue genetic

## Medical Sciences 2018

The Brown-Coxe Fellowships support early postdoctoral fellows conducting research at the Yale University School of Medicine.

- \* No citizenship restrictions.
- \* Investigators in all disciplines conducting basic, translational, or clinical research are eligible for this fellowship. (Licensed) physician-scientists are encouraged to apply.
- \* Applicants cannot have completed more than two years of postdoctoral research as of July 1, 2018.
- \* Candidates must have received the MD, PhD, or other doctoral degree by July 1, 2018.

**Application Deadline:** March 8, 2018

[Learn More >>](#)

## The Sontag Foundation

The Sontag Foundation's Distinguished Scientist Award (DSA) seeks to provide career and research support to early career scientists who demonstrate outstanding promise for making scientific and medical breakthroughs in the field of brain cancer research.

**Application Deadline:** March 14, 2018

[Learn More >>](#)

## Leidos Biomedical Research Request for Proposal S18-054 "Prototyping Carrier Basket Arrays" (RFP)

The RFP seeks proposals to use shape-changing materials ("smart materials") to create an arrayed carrier suitable for transporting 3-dimensional mammalian organoid cultures from multi-well cell culture plates into common histology cassettes.

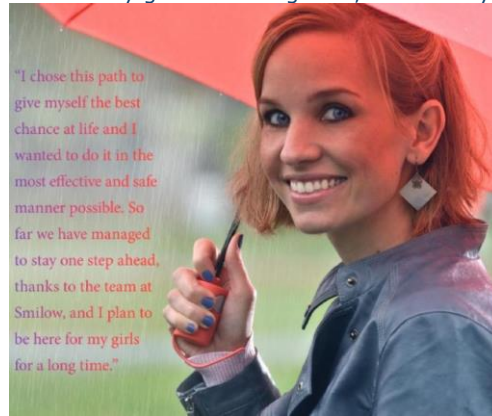
**The RFP Package consists of two attachments:** (i) the first is the RFP document, which includes instructions for preparing the proposal; and (ii) the second is the Agreement document, which is provided in advance of award to allow time to review the terms and conditions.

**Application Deadline:** March 15, 2018

[Learn More >>](#)

counseling because of her strong family history. She was referred to the Smilow Cancer Genetics & Prevention Program, and at the age of 30, Kirsty tested positive for CDH1, a gene mutation associated with a higher risk of both stomach and breast cancers.

"So far we have managed to stay one step ahead, thanks to the team at Smilow, and I plan to be here for my girls for a long time," said Kirsty.



[Read More >>](#)

## Follow Yale Cancer Center on Twitter

Follow us on [twitter](#)

### LATEST TWEETS:

🐦 Researchers @YaleSPH have developed a method to predict likely resistance paths to #cancer therapeutics, and a methodology to apply it to one of the most frequent cancer-causing genes. <http://ow.ly/oqFm30iuss7> @YaleCancer

🐦 A farewell reception was held today in honor of Dr. Madhav Dhodapkar. After 10 years at YCC, our friend and colleague has accepted a new career opportunity at Emory University. Dr. Dhodapkar will be missed!!

🐦 Check out this week's Yale Cancer Answers, "Kidney Cancer - Hereditary Connections and Treatment." Dr. Brian Shuch, a urinary oncologist at Smilow, will discuss the genetics of #kidneycancer and how this can play into treatment methods. Tune in Sunday at 7:30pm on @wnpr

### **Defense Health Program: Department of Defense Ovarian Cancer Research Program - Anticipated Funding Opportunities for Fiscal Year 2018 (FY18)**

FY18 OCRP Program Announcements and General Application Instructions for the following award mechanisms are anticipated to be posted on Grants.gov in March 2018. Pre-application and application deadlines will be available when the Program Announcements are released.

- \* Clinical Development Award
- \* Omics Consortium Development Award
- \* Investigator-Initiated Research Award
- \* Ovarian Cancer Academy Award - Early-Career Investigator
- \* Pilot Award

[Learn More >>](#)

### **Pancreatic Cancer Action Network - The Pancreatic Cancer Detection Consortium (U01)**

This Funding Opportunity Announcement (FOA) invites applications from multi-disciplinary teams of researchers and clinicians to establish the Pancreatic Cancer Detection Consortium (PCDC) to conduct research to improve the detection of early stage pancreatic ductal adenocarcinoma (PDAC) and characterization of its precursor lesions.

**Application Deadline:** April 6, 2018

[Learn More >>](#)

### **SPORE in Lung Cancer Program Awards: Career Development Program**

The Career Development Program will provide support of up to \$50,000 to promising junior investigators and/or establish investigators who have not previously conducted lung cancer focused research.


**Application Timeline:** Letters of intent are due no later than 5:00 PM, April 27, 2018


[Learn More >>](#)


 Register today for the 2018


Yale Urology Men's Health Symposium: Men's Health Across the Lifespan coming up on Sat., March 17 from 7am-1pm at the Old Saybrook Point Inn.


 New study from Yale's Amy Davidoff shows that the Affordable Care Act Lowered Uninsured Rate for Cancer Survivors .@YaleSPH .@YaleCOPPER#ACA


 What do most clinicians know about medical marijuana, and are they willing to recommend it to children with cancer? Learn more via @YaleCancer: <http://ja.ma/2BZUEQT> #MedicalMarijuana #PediatricCancer


 .@JMAOnc recently published an article by .@DanielPetrylak and .@Joseph\_W\_Kim which reported the long-term clinical outcomes of atezolizumab therapy for patients with metastatic urothelial carcinoma: <http://bit.ly/2F4lhmv> .@YaleCancer

 Dr. Kamyar Ghabili is back from #GU18 + reports his poster: "Is PI-RADS 3/total lesion ratio associated with clinically-significant prostate cancer in patients with equivocal-risk lesions on multi-parametric MRI?" generated a lot of interest from attendees.

 Joe Kim presents our phase I data on atezolizumab in castrate resistant Prostate Cancer

 YCC and @trovogene have teamed up to help develop targeted oncology treatments for patients with Acute Myeloid Leukemia or AML. Dr. Amer M. Zeidan is leading the clinical trial at YCC.

 A chance discovery by Yale's Dan Wu has led to a promising new opportunity for treating #intestinal and #colorectal

 .@AneesChagpar is optimistic SHAVE2 will prove that the shave margin technique will become the standard in partial mastectomies for #breastcancer. ...[it's] revolutionizing how breast cancer surgery is performed worldwide." #bcsm .@YNHH .@YaleMed

### **SPORE in Lung Cancer Program Awards: Developmental Research Program**

To provide seed money to investigators to support studies with a strong translational component that have the potential to evolve into, or be incorporated into, a full Yale SPORE in Lung Cancer project.

**Application Timeline:** Letters of intent are due no later than 5:00 PM, April 27, 2018

[Learn More >>](#)

## **Recent Publications**

### **Atezolizumab (MPDL3280A) Monotherapy for Patients With Metastatic Urothelial Cancer: Long-term Outcomes From a Phase 1 Study.**

Petrylak DP, Powles T, Bellmunt J, Braithen F, Loriot Y, Morales-Barrera R, Burris HA, Kim JW, Ding B, Kaiser C, Fassò M, O'Hear C, Vogelzang NJ.

JAMA Oncol. 2018 Feb 8.

[Read More >>](#)

### **Changes in Health Insurance Coverage Associated With the Affordable Care Act Among**

### **Adults With and Without a Cancer History: Population-based National Estimates.**

Davidoff AJ, Guy GP Jr, Hu X, Gonzales F, Han X,

Zheng Z, Parsons H, Ekwueme DU, Jemal A.

Med Care. 2018 Mar;56(3):220-227.

[Read More >>](#)

### **Adaptive and Reversible Resistance to Kras Inhibition in Pancreatic Cancer Cells.**

## **Closer to Free**

# **closer to free**

The fund to advance cancer research and enhance patient care

---

## **Calendar of Events**

**February 23; 11:00AM**

### **Smilow Screening and Prevention Program**

YNHH York Street Atrium  
*National Cancer Prevention Month - Screening Table*

[Read More >>](#)

**February 25; 7:30PM**

### **Yale Cancer Answers**

WNPR  
*Treatment Options for Gastric Cancers*  
Stacey M. Stein, MD

[Read More >>](#)

**February 27; 9:30AM**

### **Pathology Research in Progress Talks**

TAC N-107  
*ENPP1 and Paradoxical Mineralization: Preclinical Models of CKD-MBD; TBD*  
Nathan Maulding; Jacqueline Starrett

[Read More >>](#)

**February 27; 12:00PM**

### **Yale Cancer Center Grand Rounds**

Park Street Auditorium  
*Tumor Development and the Complexity of Immune Response; Algorithms for Analysis of Single Cell High-throughput Data*  
Alfred L. Bothwell, PhD; Yuval Kluger, PhD

[Read More >>](#)

**February 28; 10:00AM**

### **Dermatology Grand Rounds Visiting Professor Lecture**

LMP 1094  
*Translating CAART Immunotherapy of Pemphigus from Bench to Bedside*  
Aimee S. Payne, MD, PhD

[Read More >>](#)



Chen PY, Muzumdar MD, Dorans KJ, Robbins R, Bhutkar A, Del Rosario A, Mertins P, Qiao J, Schafer AC, Gertler F, Carr S, Jacks T.

Cancer Res. 2018 Feb 15;78(4):985-1002.

[Read More >>](#)

**Y90 radioembolization dosimetry using a simple semi-quantitative method in intrahepatic cholangiocarcinoma: Glass versus resin microspheres.**

Nezami N, Kokabi N, Camacho JC, Schuster DM, Xing M, Kim HS.

Nucl Med Biol. 2018 Jan 16;59:22-28.

[Read More >>](#)

**Prognostic Value of Lymph Node Yield and Density in Head and Neck Malignancies.**

Cheraghlou S, Otremba M, Kuo Yu P, Agogo GO, Hersey D, Judson BL.

Otolaryngol Head Neck Surg. 2018 Feb 1.

[Read More >>](#)

Treatment Times in Salivary Gland Cancer: National Patterns and Association with Survival.

Morse E, Fujiwara RJT, Judson B, Mehra S.

Otolaryngol Head Neck Surg. 2018 Feb 1:194599818758020.

[Read More >>](#)

Targeting tumour microenvironment by tyrosine kinase inhibitor.

Tan HY, Wang N, Lam W, Guo W, Feng Y, Cheng YC. Mol Cancer. 2018 Feb 19;17(1):43.

[Read More >>](#)

In vitro and in vivo activity of IMG853, an Antibody-Drug Conjugate targeting Folate Receptor Alpha linked to DM4, in biologically aggressive endometrial cancers.

**February 28; 5:00PM**

**49th Annual Samuel D. Kushlan Visiting Professorship in Gastroenterology**

LMP 1094

*Diagnosis and Management of Hereditary Colorectal Cancer Syndromes*

C. Richard Boland, MD

[Read More >>](#)

**March 1; 11:00AM**

**YCC Seminar**

FMB 115

*Anal Cancer: Current Developments of Orphan Malignancy*

Cathy Eng, MD, FACP

[Read More >>](#)

**March 1; 12:30PM**

**Pathology Grand Rounds**

LMP 1094

*Lymphomas in WHO-Ville - An Ever-Changing Neighborhood*

Steven H. Swerdlow, MD

[Read More >>](#)

**March 1; 2:30PM**

**Smilow Cancer Genetics and Prevention Program Seminar**

330 Orchard Street, Suites 107-109

[Read More >>](#)

**March 2; 12:00PM**

**YNHH Smilow Cancer Hospital Seminar**

Park Street Seminar Room 202

*Tips for Navigating the Grocery Store and Your Kitchen*

Amy Bragagnini, RD; Cortney Malcher, RD

[Read More >>](#)

**March 4; 7:30PM**

**Yale Cancer Answers**

WNPR 90.5

*New Advances in Stem Cell Transplant*

Stuart Seropian, MD

[Read More >>](#)

**March 5; 12:00PM**

**Yale Epigenetics Interest Group Seminar Series**

Altwerger G, Bonazzoli E, Bellone S, Egawa-Takata T, Menderes G, Pettinella F, Bianchi A, Riccio F, Feinberg J, Zammataro L, Han C, Yadav G, Dugan K, Morneault A, Ponte JF, Buza N, Hui P, Wong S, Litkouhi B, Ratner E, Silasi DA, Huang GS, Azodi M, Schwartz PE, Santin AD.

Mol Cancer Ther. 2018 Feb 13.

[Read More >>](#)

Lymphedema in ovarian cancer survivors: Assessing diagnostic methods and the effects of physical activity.

Iyer NS, Cartmel B, Friedman L, Li F, Zhou Y, Ercolano E, Harrigan M, Gottlieb L, McCorkle R, Schwartz PE, Irwin ML.

Cancer. 2018 Feb 13.

[Read More >>](#)

Myeloid-targeted immunotherapies act in synergy to induce inflammation and antitumor immunity.

Perry CJ, Muñoz-Rojas AR, Meeth KM, Kellman LN, Amezquita RA, Thakral D, Du VY, Wang JX, Damsky W, Kuhlmann AL, Sher JW, Bosenberg M, Miller-Jensen K, Kaech SM.

J Exp Med. 2018 Feb 7.

[Read More >>](#)

**Suppression of homology-dependent DNA double-strand break repair induces PARP inhibitor sensitivity in VHL-deficient human renal cell carcinoma.**

Scanlon SE, Hegan DC, Sulkowski PL, Glazer PM.

Oncotarget. 2017 Dec 19;9(4):4647-4660.

[Read More >>](#)

TSH, Thyroid Hormone, and PTC-Response.

Huang H, Rusiecki J, Udelsman R, Zhang Y.

Cancer Epidemiol Biomarkers Prev. 2018 Feb;27(2):228-229.

BCMM 206/208

[Read More >>](#)

**March 6; 9:30AM**

**Pathology Research in Progress Talks**

TAC N-107

Hyung Chun, MD, FAHA; Wesley Cai

[Read More >>](#)

**March 6; 12:00PM**

**Yale Cancer Center Grand Rounds**

Park Street Auditorium

*Cervical Cancer Screening: Implementation Science in Africa*

Sten Vermund, MD, PhD

[Read More >>](#)

**March 8; 12:30PM**

**Pathology Grand Rounds**

LMP 1094

*SAGA Functions in Development and Disease*

Sharon Y. R. Dent, PhD

[Read More >>](#)

**March 8; 2:30PM**

**Smilow Cancer Genetics and Prevention Program Seminar**

330 Orchard Street, Suites 107-109

[Read More >>](#)

**March 8; 4:00PM**

**Microbiology Graduate Program Seminar Series**

HOPE 216

Z. Hong Zhou, PD

[Read More >>](#)

---

## Submissions

Please submit your recent publication and grant announcements to:

**Renee Gaudette**

Director, Public Affairs and Communications

[Read More >>](#)

**Non-coding RNAs and retroviruses.**

Zhang X, Ma X, Jing S, Zhang H, Zhang Y.  
Retrovirology. 2018 Feb 9;15(1):20.

[Read More >>](#)

**Processing and Reporting of Breast Specimens in the Neoadjuvant Setting.**

Bossuyt V.  
Surg Pathol Clin. 2018 Mar;11(1):213-230.

[Read More >>](#)